



Installation Instructions

BR5 Front Bumper Replacement Part Number 24295T

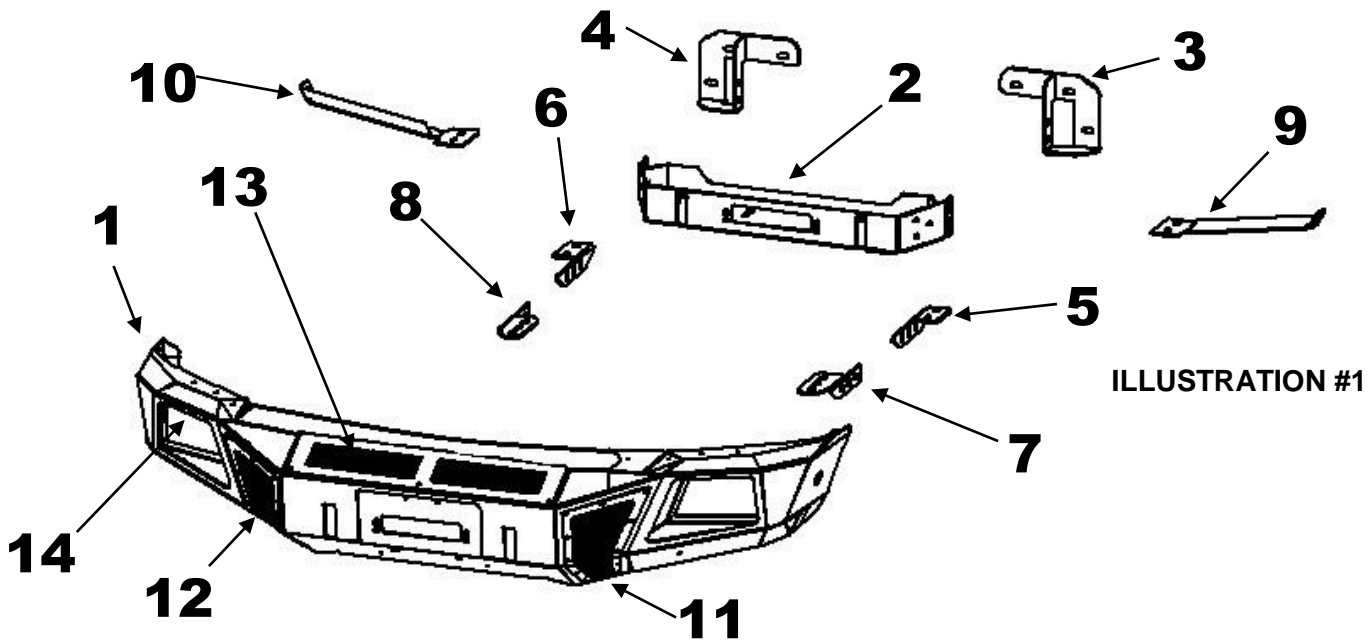
2015-2016 Ford F-150 2/4WD (Excludes Models with Active Park Assist & Adaptive Cruise Control)

Do not attempt to install this product on any vehicle other than the one listed above!

Parts List

Item	Qty.	Part #	Description
1	1		Bumper Replacement Shell
2	1		Mounting Plate/Winch Tray
3	1		Driver Frame Bracket
4	1		Passenger Frame Bracket
5	1		Driver Auxiliary Bracket
6	1		Passenger Auxiliary Bracket
7	1		Driver Extension Bracket
8	1		Passenger Extension Bracket
9	1		Driver Support bracket
10	1		Passenger Support Bracket
11	1		Driver Side Vent Cover
12	1		Passenger Side Vent Cover
13	1		Winch Cover
14	2		Light Pod Plate

Item	Qty.	Part #	Description	Torque
15	1		License Plate Bracket	
16	4		Plastic Hole Plug	
17	12		1/2" x 1 1/2" Hex Bolt	64 ft. lbs.
18	16		1/2" x 1 1/2" Carriage Bolt	64 ft. lbs.
19	34		1/2" Flat Washer	
20	28		1/2" Lock Washer	
21	22		1/2" Hex Nut	
22	4		3/8" Clip -Nuts	
23	6		3/8" x 1 1/4" Hex Bolt	26 ft. lbs.
24	6		3/8" Lock Washer	
25	6		3/8" Flat Washer	
26	2		3/8" Hex Nut	
27	38		1/4" x 3/4" Button Head Bolt	71 in. lbs.
28	10		1/4" Nylon Lock Nut	



Tool Required:

Metric & Standard Wrenches, and (3/8" & 1/2" Drive) Metric & Standard Sockets
Slotted Blade Screw Driver
5/32" Hex Key
(3/8" & 1/2") Drive Ratchet, Ratchet Extensions & Swivel Joint Adapter
Razor Knife

Approximate installation time: 2 hrs.

IMPORTANT INSTALLATION NOTES AND SUGGESTIONS

The pre-installed Mesh Winch and Vent Covers need to be removed using hand tools to slowly remove the bolts. Using an air assisted impact or ratchet will damage the bolt threads and the internal nut assembly in the bumper shell. Use of an appropriate anti-seize compound is highly recommended for re-installation, and tighten the bolts to the specified torque as overtightening could result in difficulty of future removal.

Models equipped with Active Park Assist & Adaptive Cruise Control: Installation of this bumper replacement on your truck will render your Active Park Assist & Adaptive Cruise Control inoperable.

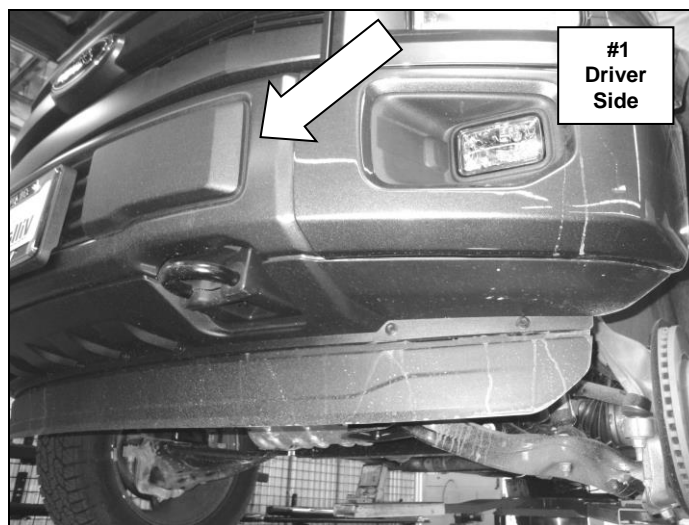
To maintain and care this product keep it clean and do not use abrasive cleaners or polish waxes. **Texture Painted Finish:** Mild liquid detergent may be used. **Polished Stainless & Semi-Gloss Painted Finishes:** We recommend using only non-abrasive automotive wax such as pure carnauba to avoid scratches and rust.

Read the installation instructions completely and verify that all of the parts listed are accounted for. If you have defective, missing or damaged parts or need assistance, please contact Go Rhino Products for fast, friendly customer service at: (888) 427-4466 or email: sales@gorhino.com

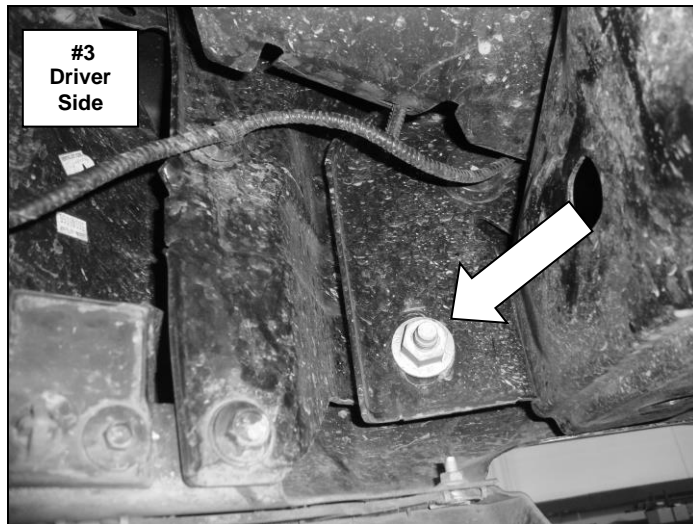
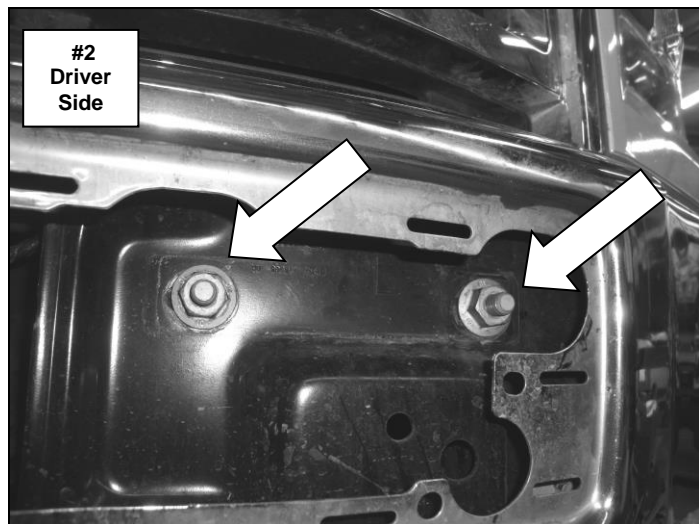
Front Bumper Removal

Step-1 Remove the 3 plastic clips that are holding the rubber shroud to the top of the factory bumper.

Step-2 Use a flat blade screwdriver to lift the ends then unsnap the fasteners and remove the plastic bumper cover from the center of the factory bumper, (Photo 1).



Step-3 Beginning with the driver side, remove the nuts (3) per side, (2) located at the front and (1) located at the back securing the factory bumper bracket to the frame, (Photo 2 & 3). Repeat for the passenger side.



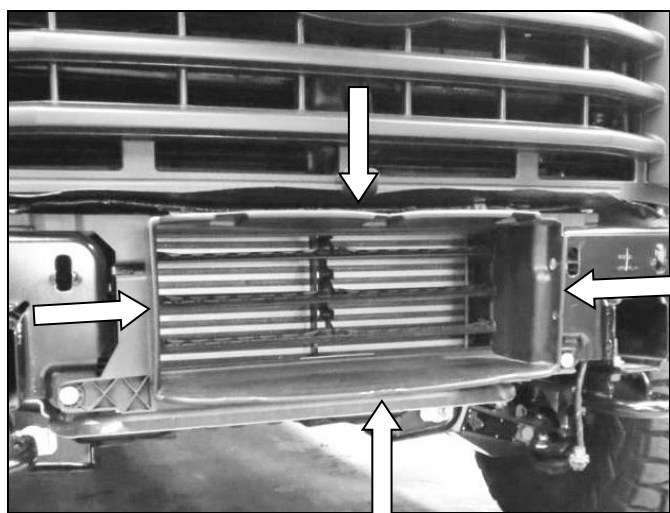
Step-4 Disconnect the wiring harness, unplug the fog lights.

Step-5 With assistance remove the bumper from the vehicle by pulling forward away from the vehicle.

Step-6 If equipped with tow hooks, remove the plastic cover from the tow hook, then remove the (2) bolts and tow hook from the bottom of the frame. Retain the nut plate and tow hook bolts.

Bumper Replacement Installation

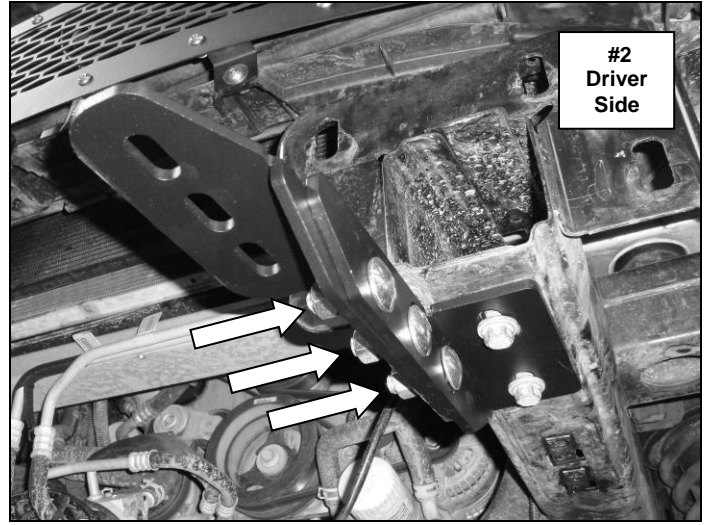
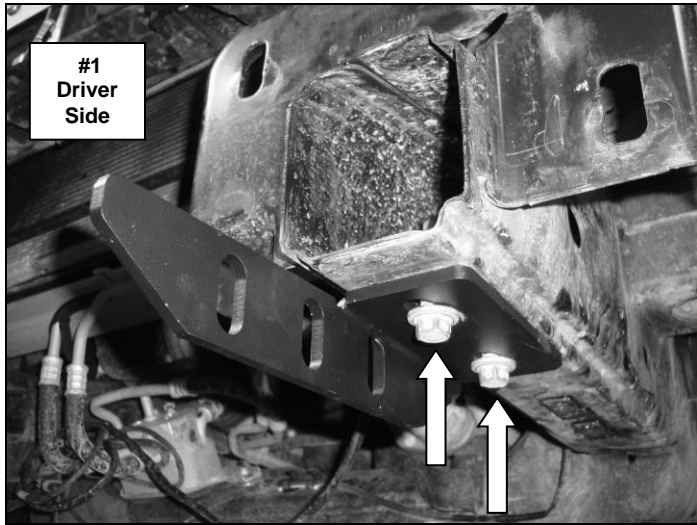
Models equipped with Ecoboost engine: If your vehicle is equipped with an Ecoboost engine, the perimeter of the shroud for the intercooler must be trimmed to allow clearance for the Mounting Plate/Winch Tray. Use a razor knife to cut the shroud along the transition line from the soft plastic to the hard plastic. **Note:** Care must be taken not to damage the louvers when cutting the shroud.



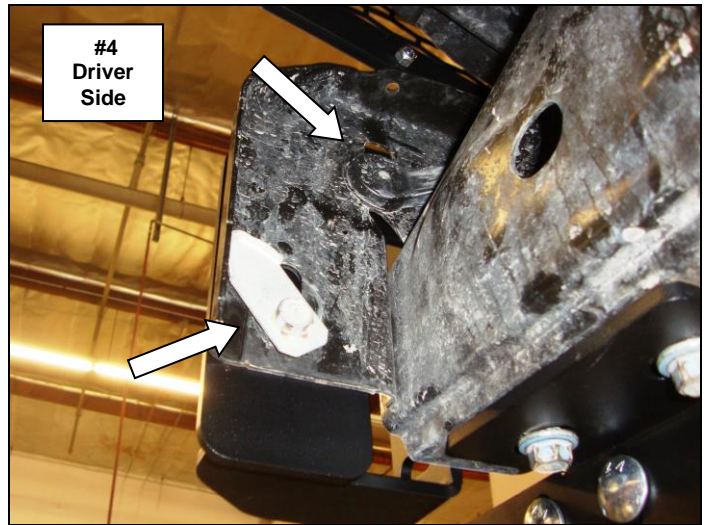
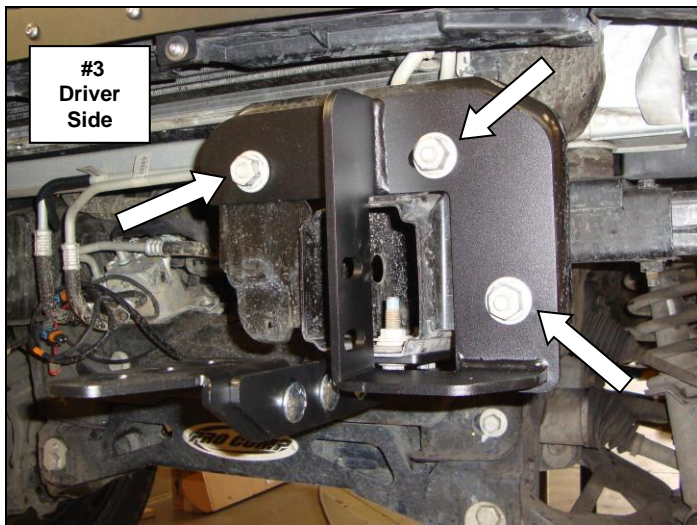
Step-1 Position the driver side auxiliary bracket on the bottom of the frame, align the holes in the bracket with the tow hook attachment holes and secure the auxiliary bracket to the frame using the factory tow hook bolts and nut plates, (Photo 1). If

your vehicle is not equipped with factory tow hooks attach the auxiliary bracket to the frame using (2) ½" x 1 ½" hex bolts, (4) ½" flat washers, (2) ½" lock washers and (2) ½" hex nuts supplied. Snug but do not fully tighten the bolts.

Step-2 Position the driver side extension bracket on the inside of the auxiliary bracket, align the holes in the brackets and secure the extension bracket to the auxiliary bracket using (3) ½" carriage bolts, (3) ½" flat washers, (3) ½" lock washers and (3) ½" hex nuts, (Photo 2). Snug but do not fully tighten the nuts and bolts.

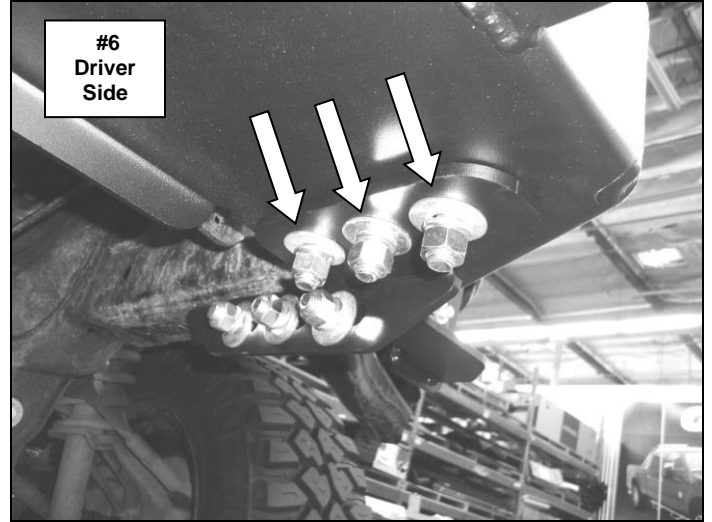
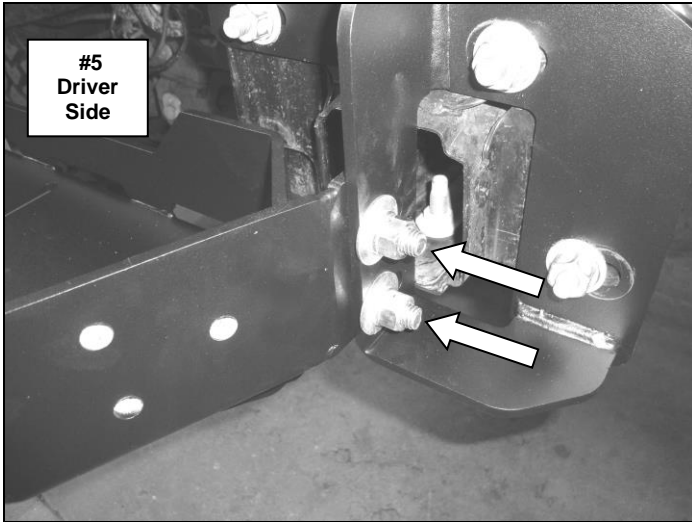


Step-3 Remove the bolt plates from the factory bumper. Position the driver side frame bracket up to the end of the frame, align the holes in the frame bracket with the factory bumper bracket attachment holes and secure the frame bracket to the frame using the factory bolt plates and nuts, (Photo 3 & 4). Snug but do not fully tighten the bolts. Repeat steps 1-3 to install the passenger side brackets.



Step-4 Position the mounting plate/winch tray on top of the extension brackets. Secure the mounting plate/winch tray to each frame bracket using (2) ½" x 1 ½" carriage bolts, (2) ½" flat washers, (2) ½" lock washers and (2) ½" hex nuts, and to each

extension bracket using (3) 1/2" x 1 1/2" carriage bolts, (3) 1/2" flat washers, (3) 1/2" lock washers and (3) 1/2" hex nut, (Photo 5 & 6). Snug but do not fully tighten the nuts and bolts.



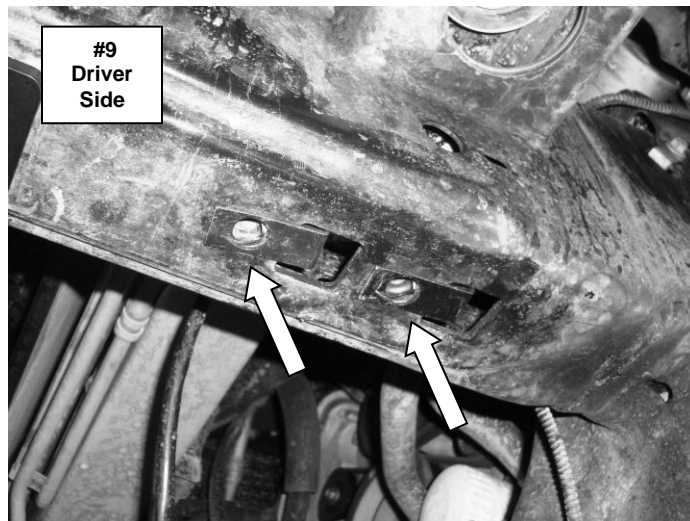
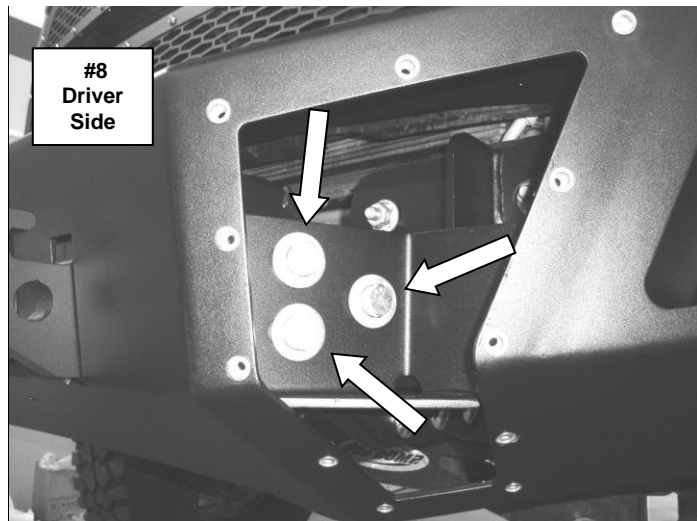
Step-5 Adjust the mounting plate/winch tray and brackets to the forward position, center and level the mounting plate/winch tray with the vehicle frame then tighten all factory hex nuts securing the frame brackets, and the supplied nuts and bolts securing the mounting plate/winch tray and frame brackets. Do not tighten the auxiliary and extension bracket nuts and bolts at this time.



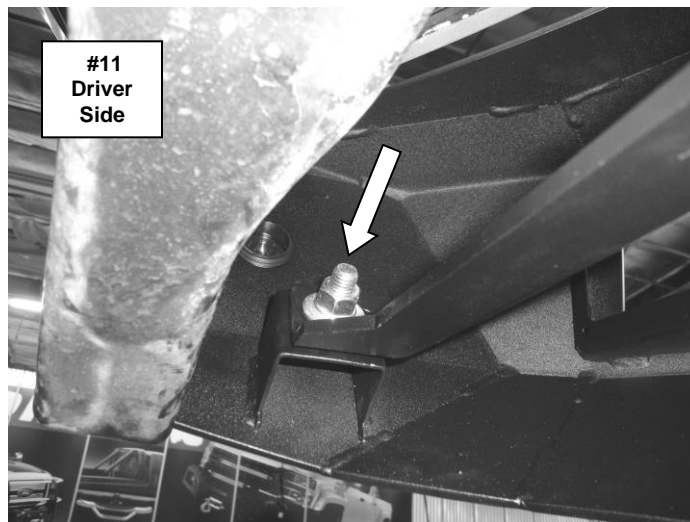
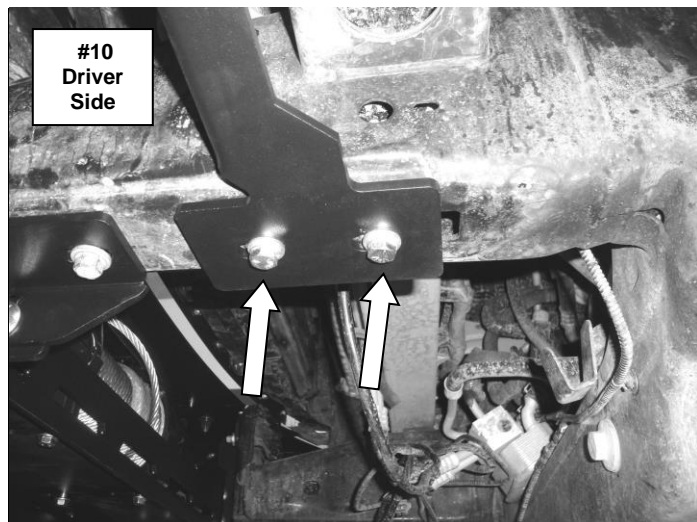
Step-6 If you are installing a winch, place the winch in the mounting plate/winch tray and refer to the winch manufacturer's instructions for installation. Do not install the fairlead at this time.

Step-7 With assistance lift the bumper shell up to the vehicle, align the holes in the bumper shell brackets with the weld nuts on the mounting plate/winch tray and secure the bumper shell to each side of the mounting plate/winch tray using (3) 1/2" x 1 1/2" hex bolts, (3) 1/2" lock washers and (3) 1/2" flat washers, (Photo 8). Leave the bolts loose for final adjustment.

Step-8 Locate the (2) sets of square and round holes in the bottom of the frame, and install 3/8" Clip-Nuts in the frame with the threaded end centered over the round hole, (Photo 9).



Step-9 Secure the driver side support bracket to the bottom of the frame using the Clip-Nuts, (2) 3/8" x 1 1/4" hex bolts, (2) 3/8" lock washers and (2) 3/8" flat washers. Attach the opposite end of the support bracket to the bumper shell bracket using (1) 1/2" x 1 1/2" hex bolt, (1) 1/2" lock washer, (2) 1/2" flat washers and (1) 1/2" hex nut, (Photo 10 & 11). Repeat step to install the passenger side support bracket.



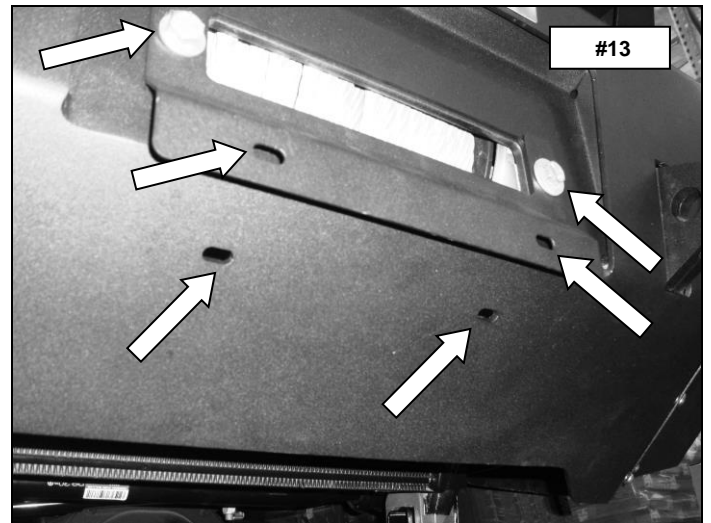
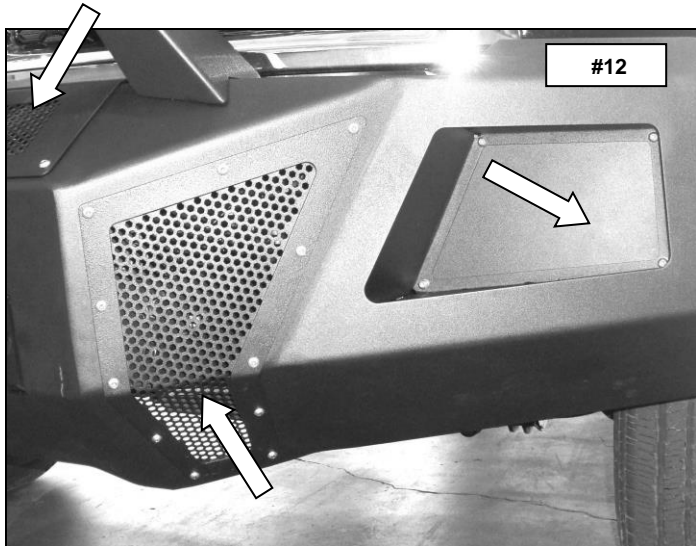
Step-10 With assistance, adjust and hold the bumper shell visual alignment position, then tighten all factory and supplied nuts and bolts. Note: It may be necessary to loosen the nuts and bolts securing the mounting plate/winch tray and brackets.

If installing a winch, install the roller fairlead to the bumper shell at this time. Refer to the winch manufacturer's instructions for installation. If installing an optional light bar, install the light bar to the bumper replacement at this time. Refer to the light bar instructions for installation.

Step-11 Install the winch cover and driver and passenger side front vent covers to the bumper shell using the supplied $\frac{1}{4}$ " x $\frac{3}{4}$ " button head bolts, (Photo 12). **Note:** Do not over tighten bolts, reference tightening torque (71 in. lbs.).

Step-12 Install the flush mount light pods to the bumper shell using (4) $\frac{1}{4}$ " x $\frac{3}{4}$ " button head bolts and (4) $\frac{1}{4}$ " nylon lock nuts, (Photo 12).

If your state law requires a front license plate, attach the license plate bracket to the holes in the face of the bumper shell, using the supplied $\frac{3}{8}$ " bolts, washers and nuts, and the license plate to the (2) obround holes in the license plate bracket using the supplied $\frac{1}{4}$ " bolts and nuts, (Photo 13).



If installing a winch, attach the license plate directly to the (2) obround holes in the lower face of the bumper shell using the supplied $\frac{1}{4}$ " bolts and nuts, (Photo 13).

Remember to check and retighten all factory and supplied nuts and bolts periodically.