

INSTALLATION INSTRUCTIONS

Dakar Sport 52379 (1-4) Dakar 52379 (1BB-4BB) Rhino Charger 5517 (B-PS)
2011 Chevrolet Silverado 2500HD, 3500HD P/U 2/4WD

Do not attempt to install this product on any vehicle other than the one it is designed for and listed above!

Parts List

<u>QTY</u>	<u>Part Description</u>	<u>QTY</u>	<u>Part Description</u>
4	3/8" x 1" Hex Bolt	4	1/2" Hex Nut
4	3/8" Flat Washer	4	1/2" Flat Washer
4	3/8" Lock Washer	4	1/2" Lock Washer
4	3/8" Hex Nut	1	Driver side Bracket
4	1/2" X 1 1/2" Hex Bolt	1	Passenger side Bracket
		1	Rhino Charger Bar

Tool Required:

18mm Wrench & Socket
9/16" Wrench & Socket
Ratchet & Ratchet Extension

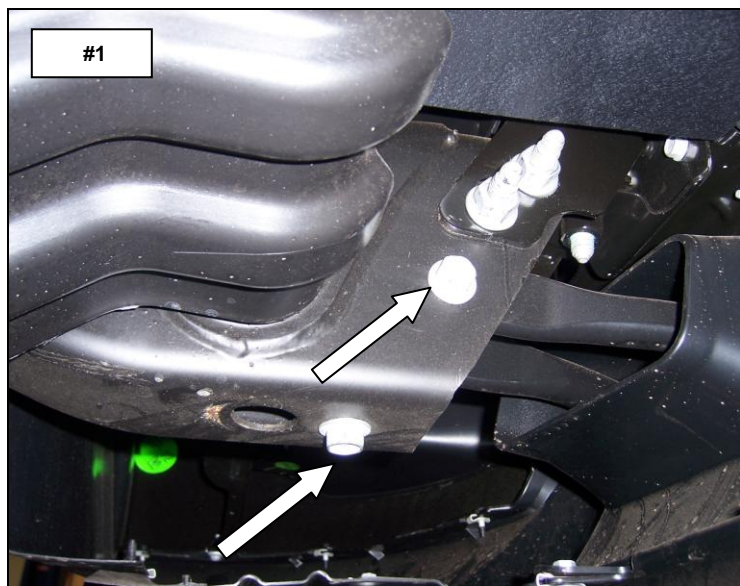
Approximate installation time: 30min

Installation

Read the installation instructions completely and verify that all of the parts listed are accounted for.

Step-1 Beginning with the driver side remove the bolts and tow hook from the frame rail. **Photo #1 & #2**

Note: The tow hooks will be re-installed.

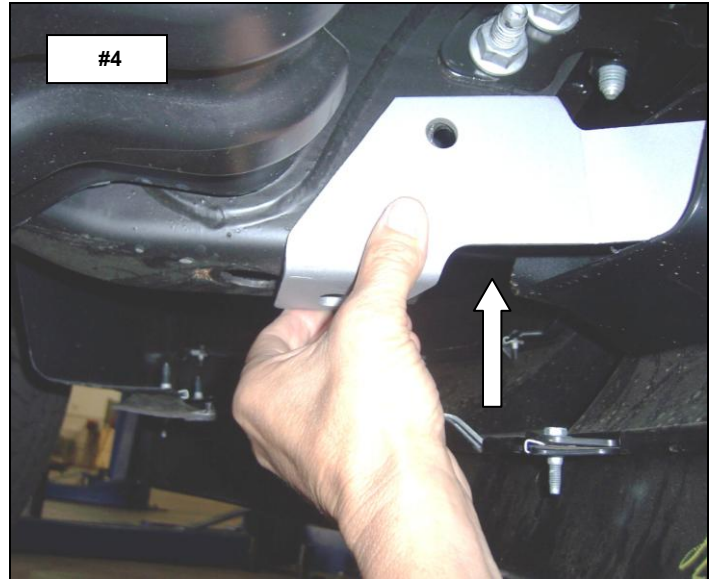
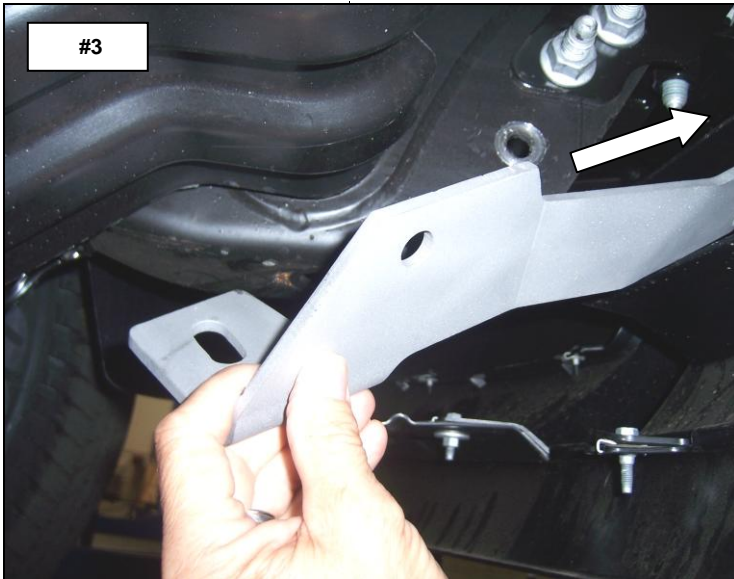


8/13/2010

INSTALLATION INSTRUCTIONS

Dakar Sport 52379 (1-4) Dakar 52379 (1BB-4BB) Rhino Charger 5517 (B-PS)
2011 Chevrolet Silverado 2500HD, 3500HD P/U 2/4WD

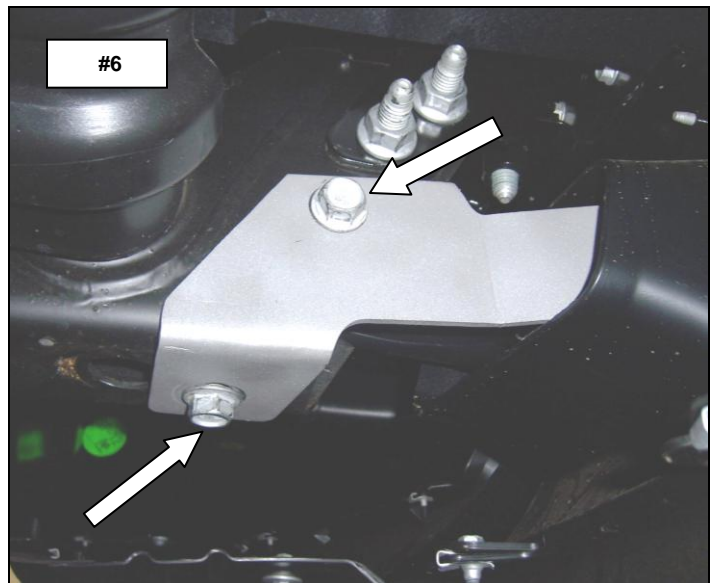
Step-2 From behind the bumper valance, position the driver side bracket so the leg of the bracket extends out through the tow hook opening, then rotate and align the bracket with the side and bottom of the frame. **Photo #3 & #4**



Step-3 position the tow hook inside the frame, align the bracket and tow hook with the holes in the frame and re-install the tow hook bolts. Leave the tow hook bolts loose for final adjustment. **Photo #5 & #6**

Repeat the above steps to install the passenger bracket.

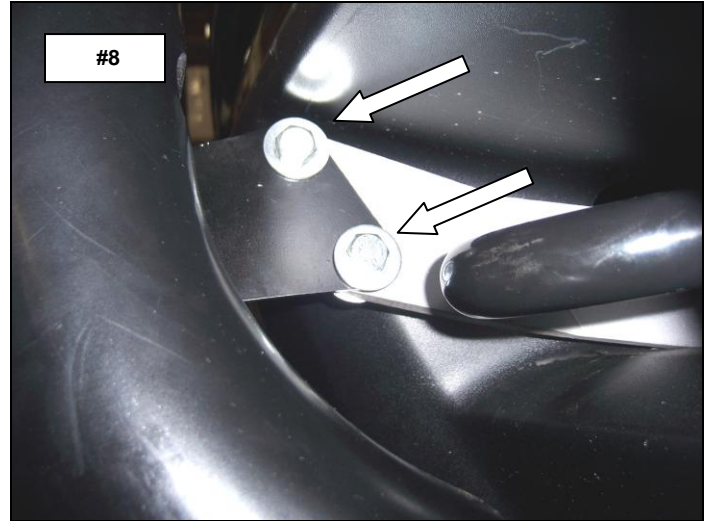
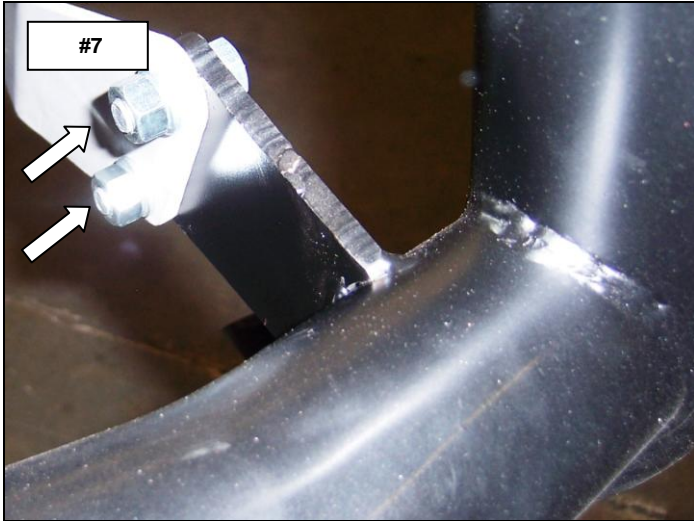
Note: if your vehicle is not equipped with factory tow hooks, attach the brackets to the frame using the $\frac{1}{2}$ " fasteners supplied.



INSTALLATION INSTRUCTIONS

Dakar Sport 52379 (1-4) Dakar 52379 (1BB-4BB) Rhino Charger 5517 (B-PS)
2011 Chevrolet Silverado 2500HD, 3500HD P/U 2/4WD

Step-4 Attach the Rhino Charger bar to the outside of the mounting brackets using (2) 3/8" x 1" hex bolts, (2) 3/8" flat washers, (2) 3/8" lock washers and (2) 3/8" hex nuts for each side. **Photo #7 & #8**



Step-5 Align the Rhino Charger bar, bracket assembly and tighten all nuts and bolts. Remember to check and re-tighten the hardware periodically.



Please do not return this product to place of purchase.

If you have defective, missing or damaged parts or need assistance, please contact *Go Rhino Products* for fast, friendly customer service at: **1-800-731-0425** or email: **info@gorhino.com**

8/13/2010