

Preparation:

- Disconnect the negative battery terminal. Park the vehicle on level ground and set the emergency brake.
- We recommend reading through the installation instructions in whole before performing the work.
- When button head bolts are being used, install the supplied washer on the nut side. Then, hold the bolt stationary and only turn the nut to tighten. Do not turn the bolt to tighten hardware assembly, unless otherwise noted.
- Estimated Installation Time: **2 Hours for OEM Removal/Bumper Installation**

1 Additional Hour to Wire Center Lights

1 Additional Hour to Wire Side Lights

1.5 Additional Hours to Install & Wire Winch

*****This installation requires 2 people for best results*****

*****Labor Rates are based on a vehicle with no pre-existing damage. Wiring labor is based on a standard wiring procedure with light switches installed in an easily accessible location. Custom light triggering or switch mounting location will result in a greater labor charge.*****

You will need the following tools:

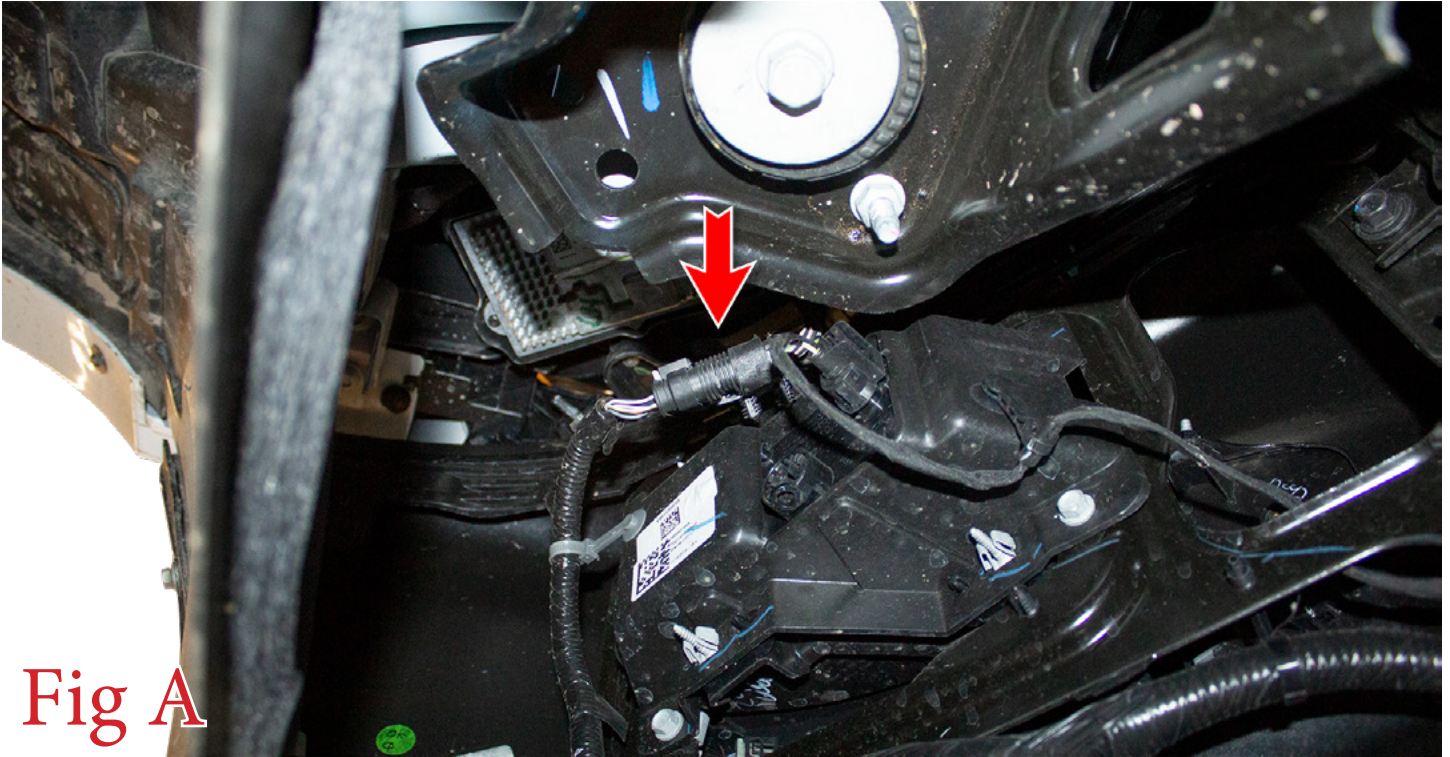
- | | | |
|-----------------|------------------------|-----------------------------|
| - Ratchet | - 10mm Socket | - 18mm Socket & Wrench |
| - 15/16" Socket | - 3/4" Socket & Wrench | - 7/32" Allen Wrench/Socket |
| - 9/16" Wrench | | |

Included in Kit:

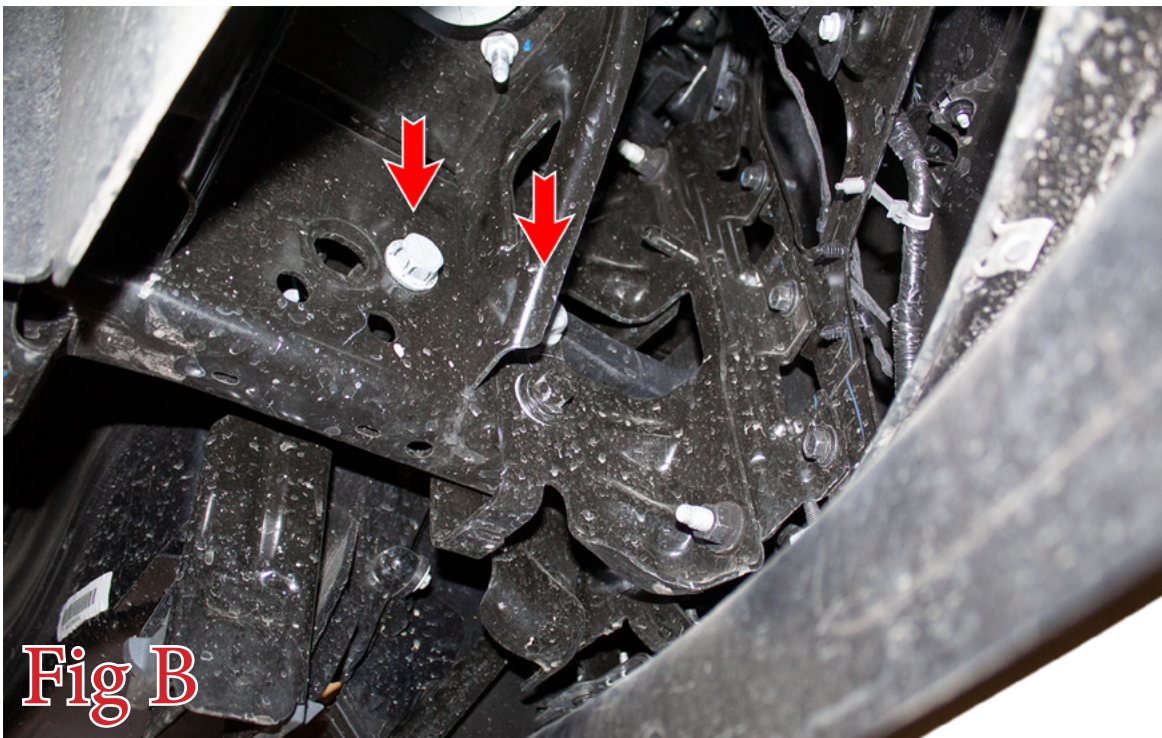
- | | |
|---|---|
| 4 - Grade 8 Hex Head Bolts (1/2"-20 x 3 1/2") | 8 - Grade 8 Washers (1/2") |
| 4 - Metal Lock Nuts (1/2"-20) | 12 - Hex Head Bolts (1/2"-13 x 1 1/2") |
| 24 - Flat Washers (1/2") | 12 - Nylon Lock Nuts (1/2"-13) |
| 4 - Button Head Bolts (3/8"-16 x 3/4") | 4 - Flat Washers (3/8") |
| 4 - Nylon Lock Jam Nuts (3/8"-16) | 6 - Cable Ties (8") |
| 1 - Winch Mounting Plate | 2 - Bumper Mounting Brackets |
| 3 - Sets of Light Mounting Tabs (BHD1, BHD2, BHD3) | |

Removal:

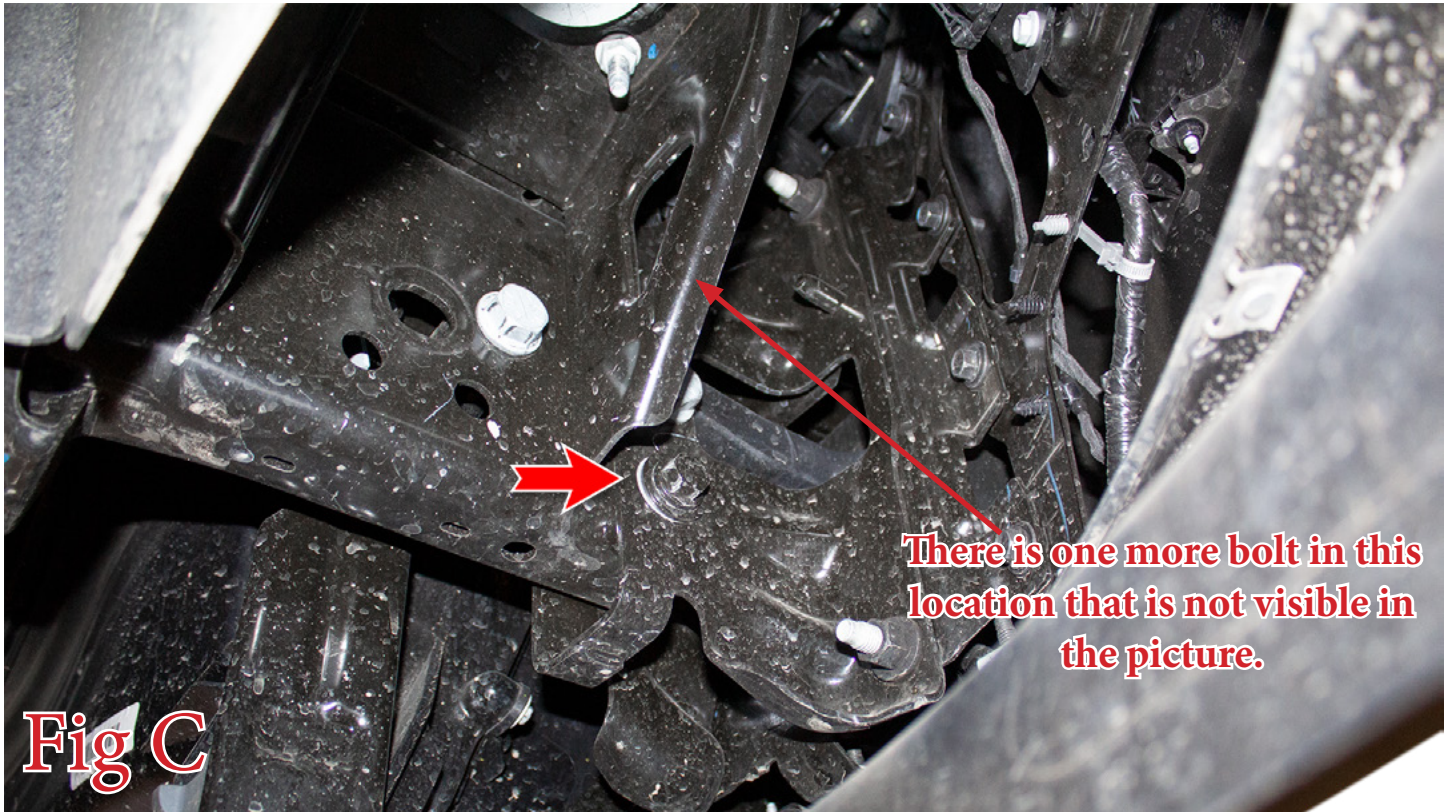
1. Underneath the truck on the driver side, unplug the main bumper harness connector. (Fig A)



2. Remove the tow hooks from the vehicle. There are 2 mounting bolts (per side) along the vehicle's frame horn. These can be accessed from underneath the vehicle. Use a 15/16" Socket to remove both of these bolts. Then, pull the tow hooks out the front of the bumper. (Fig B)



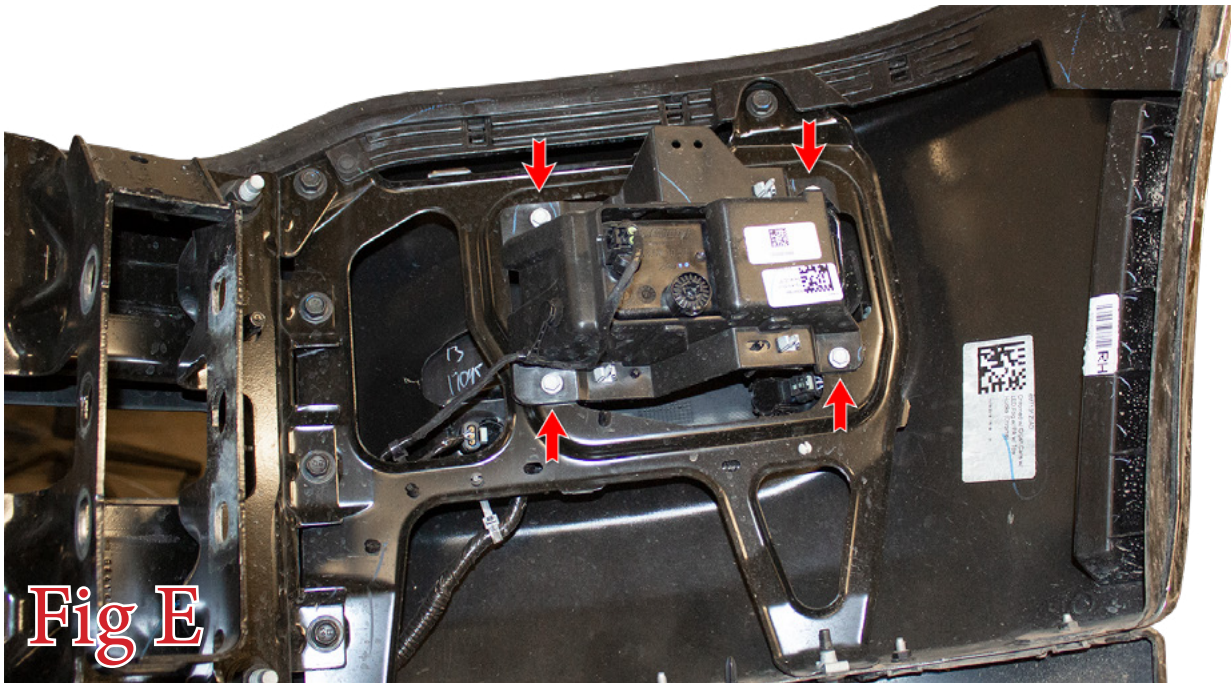
3. Use an 18mm Socket & Wrench to remove the two bumper mounting bolts (per side). Then, remove the OEM bumper from the vehicle. (Fig C) **Save these bolts for reuse.**



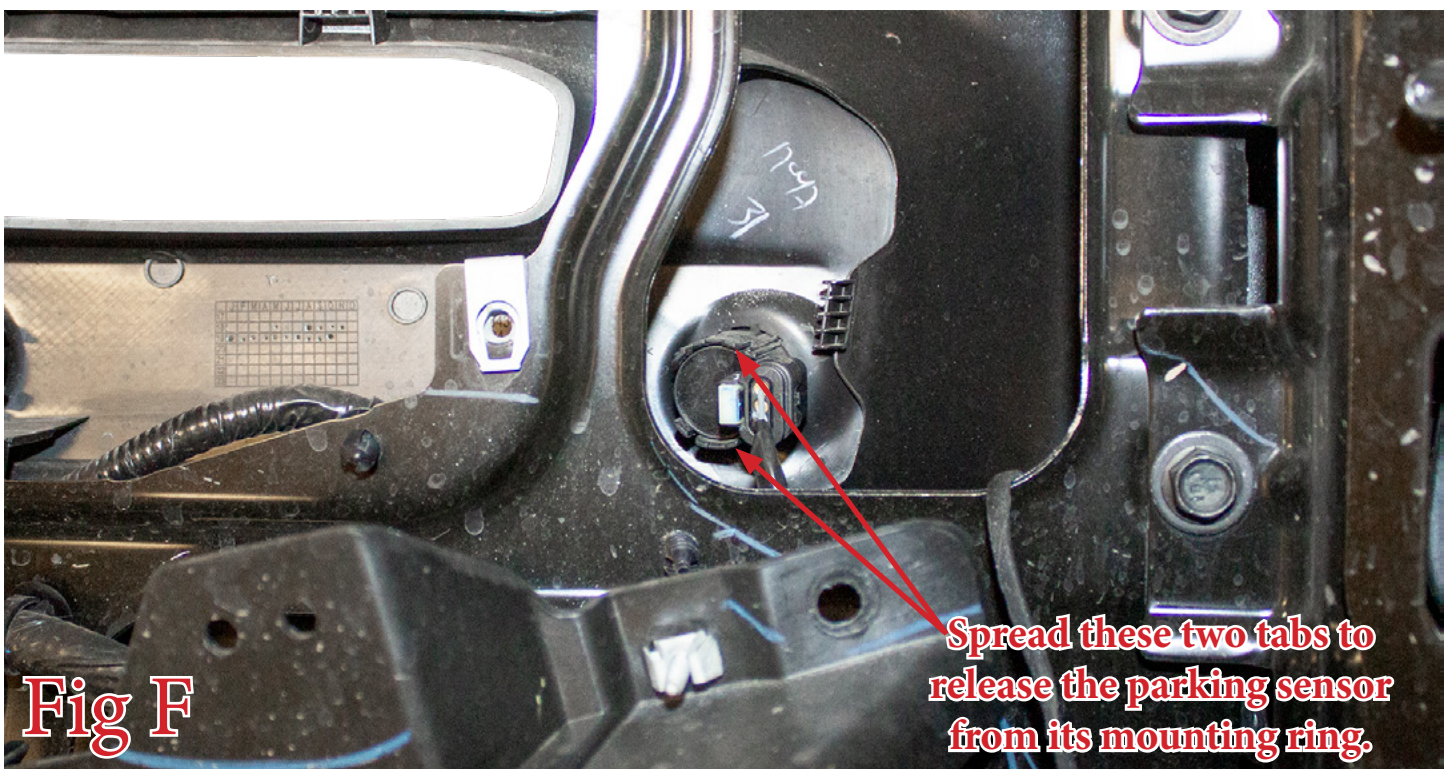
4. Use a 10mm Socket to remove the intercooler scoop mounting bolts (x4). Then, remove the three plastic clips along the bottom of the intercooler scoop and remove the scoop from the vehicle. (Fig D)



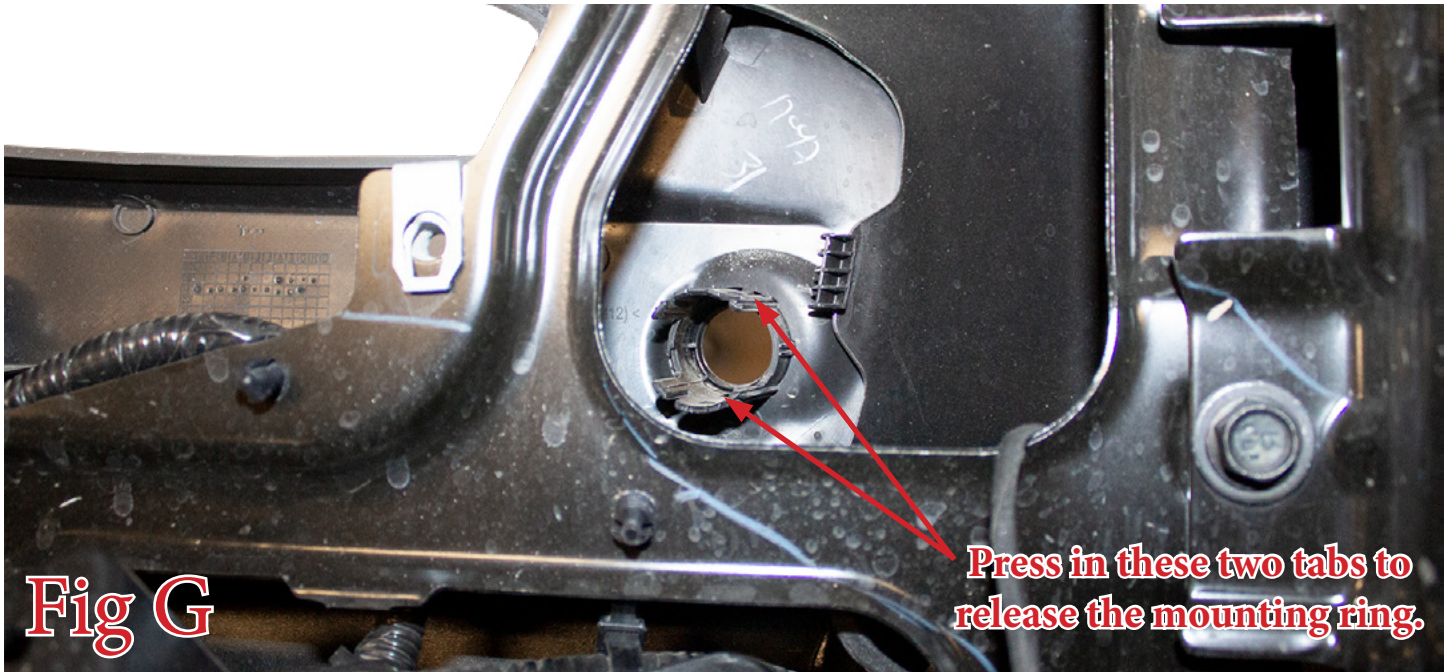
5. Set the OEM bumper on a workbench or something similar. Use a 10mm Socket to remove the four bolts holding on each fog light. (Fig E)



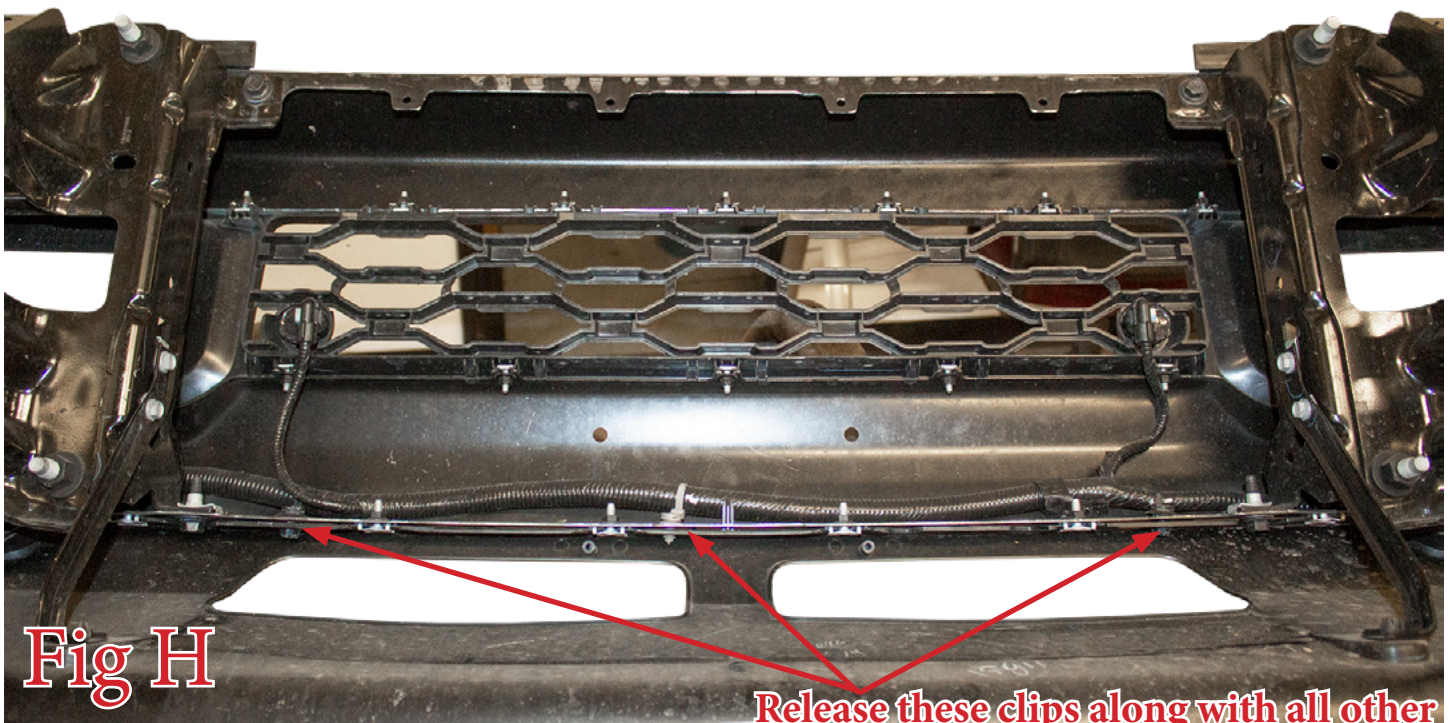
6. Remove the OEM parking sensors from their mounting rings. Do this by spreading the two tabs on the back side of the mounting rings. Then, push the sensors out the back side of the rings. (Fig F) **Make sure to keep track of the position/orientation that the parking sensors come off the OEM bumper so that they can be installed on your new bumper in the same position/orientation.**



7. Remove parking sensor mounting rings from the OEM bumper. Do this by pressing in the two tabs along the bottom of the back side of the mounting rings. (Fig G) **Make sure to keep track of the position/orientation that the mounting rings come off the OEM bumper so that they can be installed on your new bumper in the same position/orientation.**



8. Release the series of plastic clips holding on the OEM bumper harness. Then, remove this wiring harness from the OEM bumper. (Fig H)



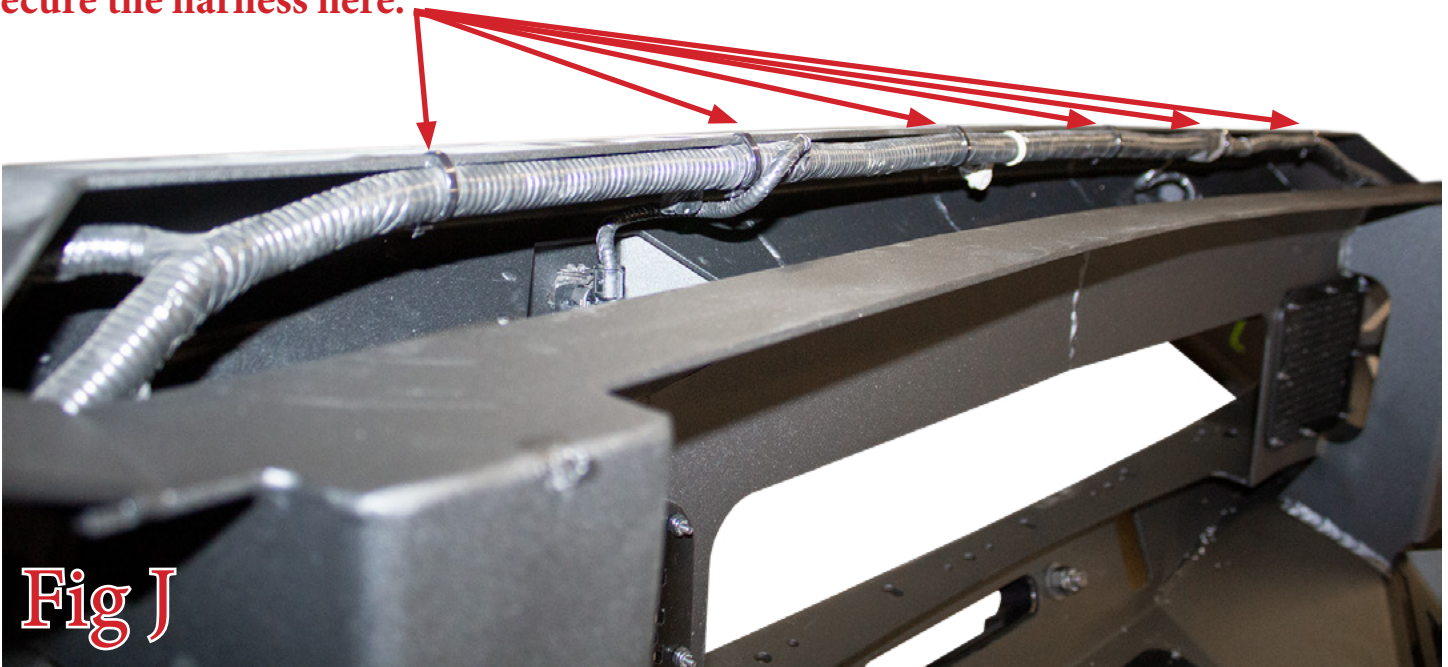
Installation:

9. Install the parking sensor mounting rings onto your new bumper. Install them by pressing them into their precut holes on the new bumper. The outer sensor rings will fit a little tighter than the rest. **Install them in the same position/orientation as they came off the OEM bumper.** (Fig I)



10. Move the bumper harness/parking sensors over to your new bumper. Press the parking sensors into their mounting rings from the back side. As you are installing the parking sensors, make sure to run the harness so that it will be out of harm's way when the bumper is installed. Also make sure the main harness connector is on the proper side. Lastly, install the parking sensors in the exact orientation as they came off the OEM bumper except the center two. Install those 180 degrees out (so the connector wiring faces up) from how they were on the OEM bumper. Use the supplied cable ties to secure the harness to the cable tie cutouts on the top hoop. (Fig J)

Secure the harness here.



11. Follow this step if you are installing dual light bars. There are three different sets of light tabs with this bumper. Pick the correct tab for your light bar setup (see below). Then, loosely set the tabs in place on the bumper, using the supplied 3/8" Black Button Head Bolts (x4), 3/8" Black Washers (x4), and 3/8" Black Lock Nuts (x4). Dual 40" Tabs will use the outer-most set of holes. Dual 30" Tabs will use the next set of holes inward. With the tabs loosely in place, install the light bars using the light manufacturer's provided hardware. With everything loosely installed, torque the supplied 3/8" hardware to 30 foot pounds. Torque the light manufacturer's hardware to their torque spec. Finally, follow the light manufacturer's guide for wiring information. (Fig K)

BHD1 - 30" Light Bars (*Rigid or Baja*)

BHD2 - Dual 40" Arc (*Baja Designs*)

BHD3 - Dual 40" RDS (*Rigid*)

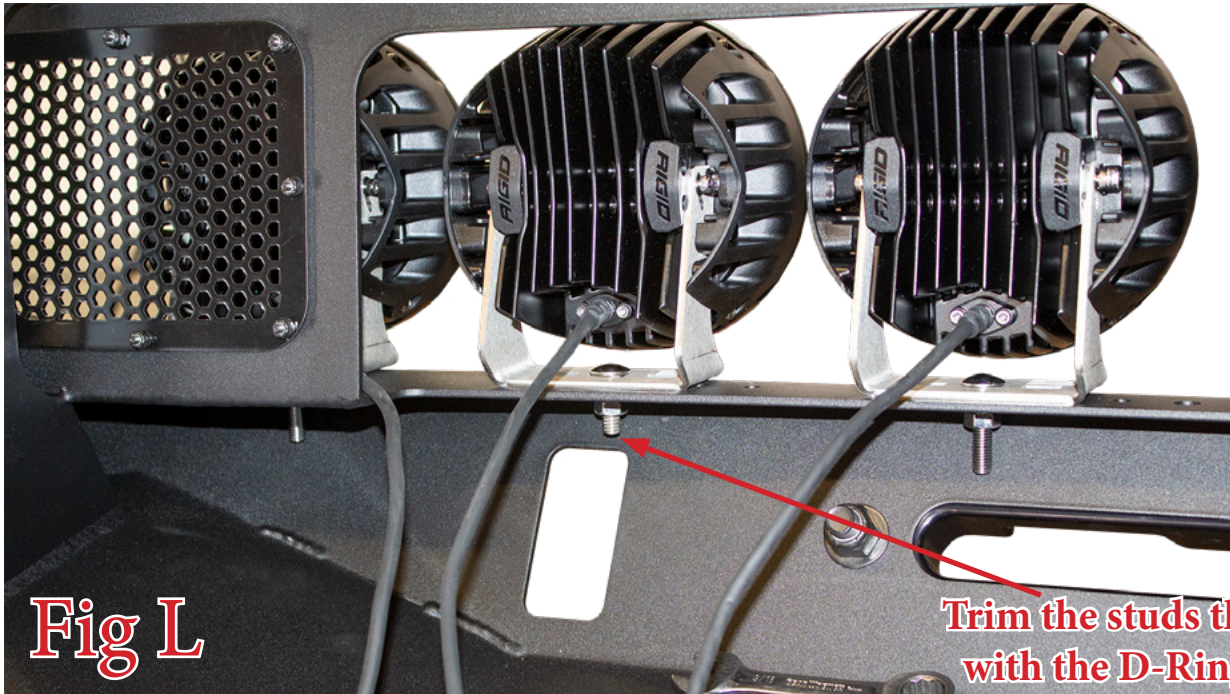
Use this set of holes for
dual 30" light tabs

Use this set of holes for dual 40"
light tabs

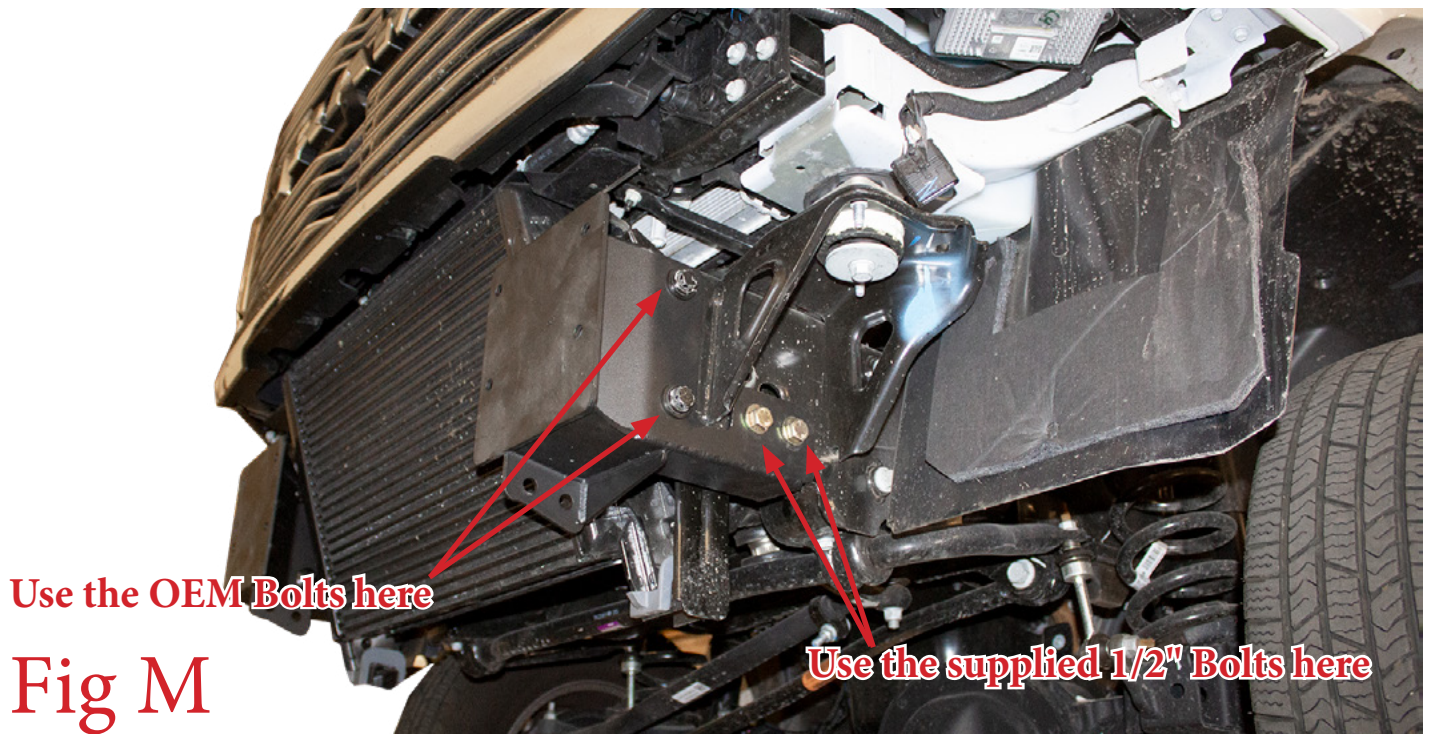


Fig K

12. If you are using rounds lights, follow this step. Use the light manufacturer's supplied hardware to mount your lights to your new bumper. For Rigid 360 series lights ONLY, two of the light studs will interfere with the opening for the D-Rings. These two studs will need to be cut shorter using a cutoff wheel or something similar. (Fig L)



13. Find the supplied Bumper Mounting Brackets. Set them in place on the vehicle. Use the OEM bumper mounting bolts from Step 3 as well as the supplied 1/2" x 3" (2 per side), 1/2" Grade 8 Washers (4 per side), and 1/2" Metal Lock Nuts (2 per side) to secure the brackets to the vehicle. (Fig M) Torque the supplied 1/2" Bolts to 80 foot pounds. Torque the OEM Bolts to OEM torque spec.



14. Find the supplied Winch Mounting Plate. Set the plate in place on the vehicle and use the supplied 1/2" Bolts (x8), 1/2" Washers (x16), and 1/2" Lock Nuts (x8) to secure the plate to the vehicle. Once all bolts are loosely installed, go back and torque them to 70 foot pounds. (Fig N)

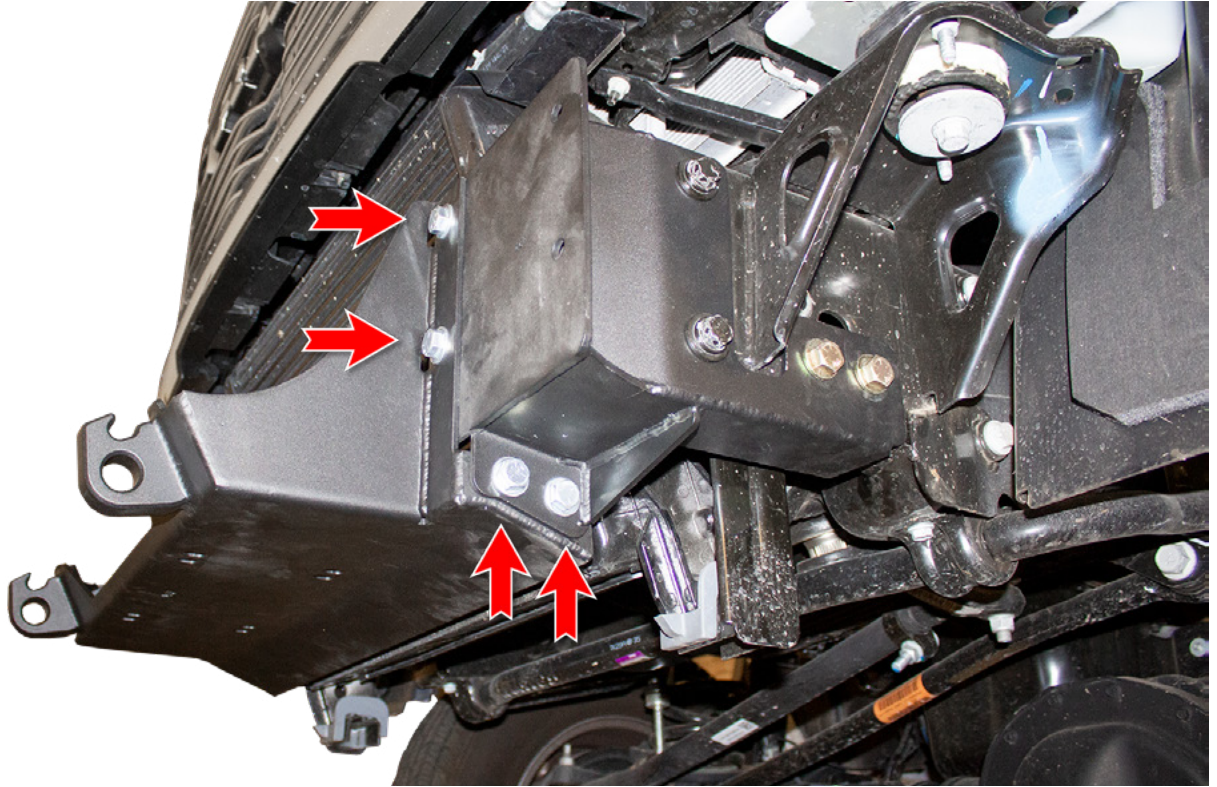


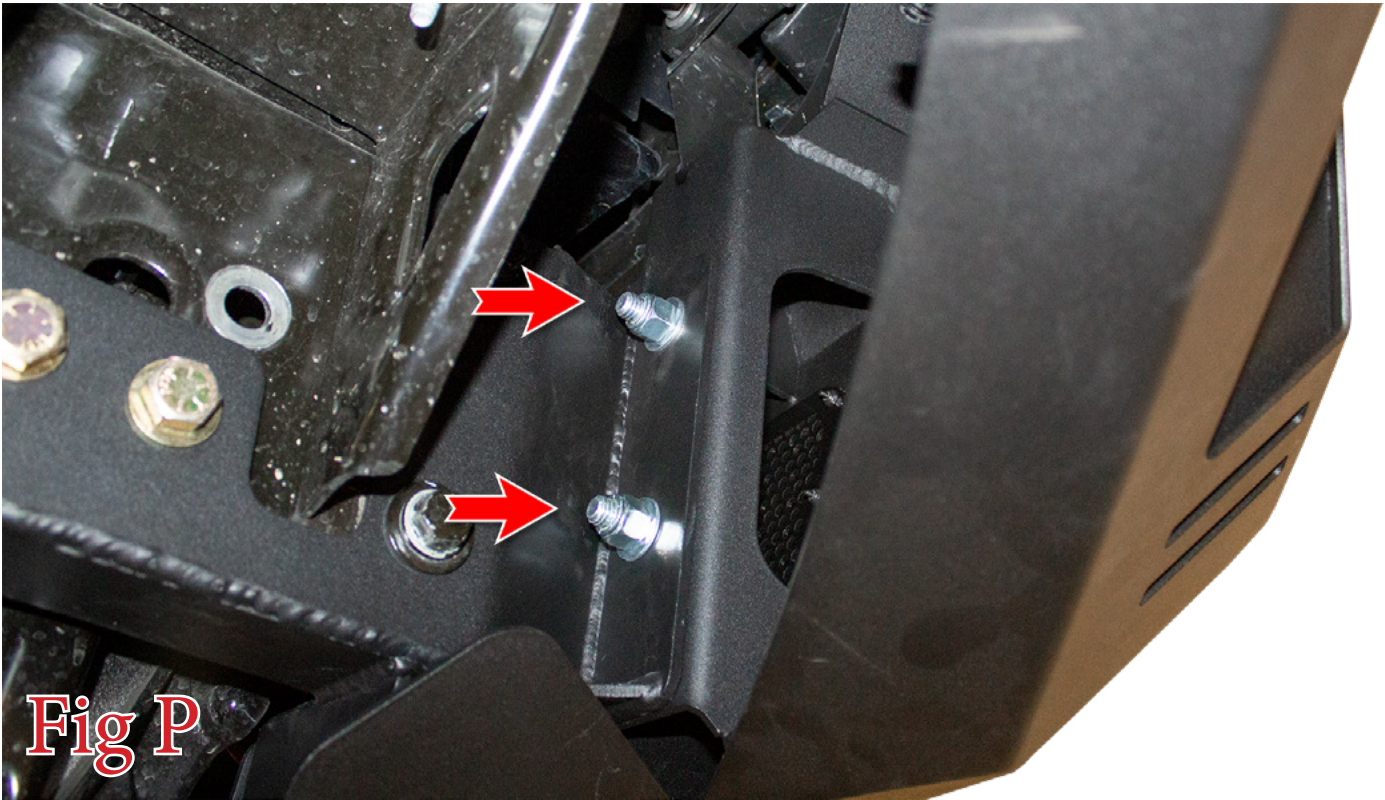
Fig N

15. Mount your winch to the winch plate now. Use the winch manufacturer's mounting hardware. Follow the winch manufacturer's guide for mounting/wiring information. Install your fairlead to your bumper now. (Fig O)



Fig O

16. Set the bumper in place on the vehicle. We recommend wrapping the tow hooks with painter's tape to help prevent damage as you install the bumper. Use the supplied 1/2" Bolts (x4), 1/2" Washers (x8), and 1/2" Lock Nuts (x4) to secure the bumper. Leave these bolts loose for now. (Fig P)



17. Center the bumper left to right. Then, tighten the mounting bolts from the previous step to 70 foot pounds.
18. If you have lights to install in your side panels do so now. Follow the light manufacturer's guide for mounting/wiring information.
19. Stand back and enjoy your new ADD Bomber HD™ Front Bumper.
20. Check and re-tighten, if needed, all mounting bolts after 100 miles and periodically thereafter.

2020-Current Ram 2500/3500 Bomber HD™
Front Bumper Installation Instructions

