



Toyota Pocket Style® Fender Flares Rear Pair

Rear Part #31080-02

Rev-4 11/19/2013

STEP 1 – PRIOR TO INSTALLATION

- A) Bushwacker only** approves installing the flares according to these written instructions with the hardware provided. **WARNING:** Failure to install according to these instructions will invalidate the warranty. This includes, but is not limited to using alternative installation methods, hardware, or materials. **DO NOT USE:** Loctite, SuperGlue, or similar products on the hardware or the flares.
- B) Fit:** Verify the fit of the flares to vehicle. (Some filing, sanding, or cutting may be necessary to ensure proper fit).
- C) Painting:** (Optional) if paint is desired it must be done prior to installing flares on vehicle. Clean outer surface with a good grade degreaser. **DO NOT USE LACQUER THINNER OR ENAMEL REDUCER AS A DEGREASER.** Wipe outer surface thoroughly with a tack rag prior to paint. Application of plastic adhesion promoter for ABS plastic as per your paint system manufacturer's recommendations is required. Paint flares using a high quality enamel, or polyurethane automotive paint. If painting edge trim (not recommended), use a flex additive.
- D) Performance:** Using larger Tires may increase the area required to turn the vehicle. Some Tire/Rim combinations may require lowering bump stops and or installing steering stops to prevent tire from contacting flare.
- E) Exhaust System:** Modifications may be necessary to maintain a minimum 4" clearance between flares and exhaust pipes. (Exhaust gases should not vent directly onto flares)
- F) Metal Protection:** All exposed fasteners and bare metal should be treated with rust resistant paint **BEFORE** installing flares. Spray inner fender wells with undercoating **AFTER** flare attachments have been completed.
- G) Decals:** Flares may interfere with existing decals on vehicle. If you wish, remove decals prior to installation of flares.

TOOLS FOR EASY INSTALLATION:

- Utility Knife
- Vise Grips
- Trim Tool or Flat Head Screwdriver
- Socket Wrench
- 10mm Socket
- 8mm Socket
- 3/8" Wrench
- 7/16" Wrench
- #2 Phillips Bit
- Grease Pencil

LIMITED LIFETIME WARRANTY AGAINST ANY MANUFACTURING DEFECTS

- To claim a warranty, you must provide Proof of Purchase.

Included in Hardware Kit:

- | | | | | | | |
|---------------------------------------------------------------------------------------------------------------------------------------------------|----------------------------------------------------------------------------------------------------------------------------------------------------------|---------------------------------------------------------------------------------------------------------------------------------------------------------|-----------------------------------------------------------------------------------------------------------------------------------------------------|---------------------------------------------------------------------------------------------------------------------------------------------------|----------------------------------------------------------------------------------------------------------------------------------------------------|----------------------------------------------------------------------------------------------------------------------------------|
| 1. 
SP1-0005,
1/2" x .257" x 1"
Nylon Spacer,
2 pcs | 2. 
SW1-0034,
14 x 1-3/4" Phillips
Truss Tap Screw,
2 pcs | 3. 
SW1-0036,
M6-.3 x 20mm Hex
Magni Black Screw,
16 pcs | 4. 
SW1-0067,
5/16 x 18 x 3/8"
SS Torx Screw,
20 pcs | 5. 
WA1-0012,
.320 x .700 x .03
SS Washer,
24 pcs | 6. 
NU1-0019,
5/16-18 Jam Fin.
Nylock Nut,
24 pcs | 7. 
ET1-0002,
Edge Trim Tool,
1 pc |
| 8. 
SW1-0052,
T-45 Torx Bit,
1 pc | 9. 
GP1-0005,
Large Wiper Style
Edge Trim,
172 inches | | | | | |

Flare Pocket Hardware Installation:



1

Put a Washer (WA1-0012) on each Bolt (SW1-0059).



2

Put each Bolt/Washer combination through a pocket hole in the flare, Bolt head and Washer on the outside.



3

FRONT MAIN & REAR FLARE ONLY: Place a Nut (NU1-0019) over the end of each Bolt and tighten, using a 1/2" wrench for the Nut and the supplied Torx Bit (SW1-0052) for the Bolt. Repeat for remaining pockets.

NOTE: Pocket hardware for the Front Bumper Piece is covered later in this instruction set.

STEP 4 - EDGE TRIM INSTALLATION

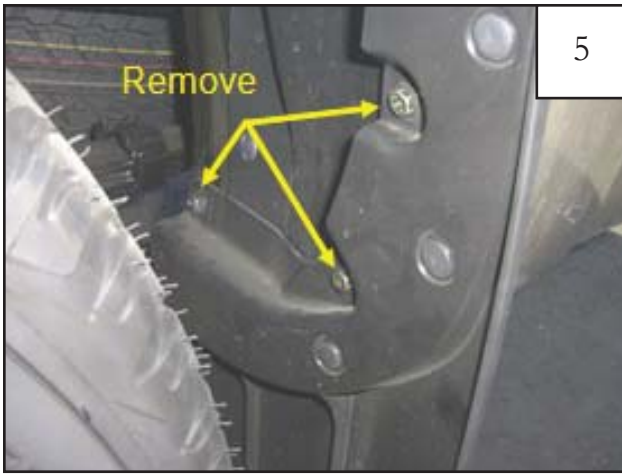
A. Peel two to three inches of red vinyl backing away from Edge Trim (GP1-0005) tape. Applying the adhesive side of the edge trim to the inner side of the flare, affix the edge trim to the top edge of the flare (the portion that comes in contact with the vehicle).

B. Press edge trim into place along the top edge of the flare in one-foot increments, pulling red vinyl backing free as you continue to work your way around the top edge of the flare.

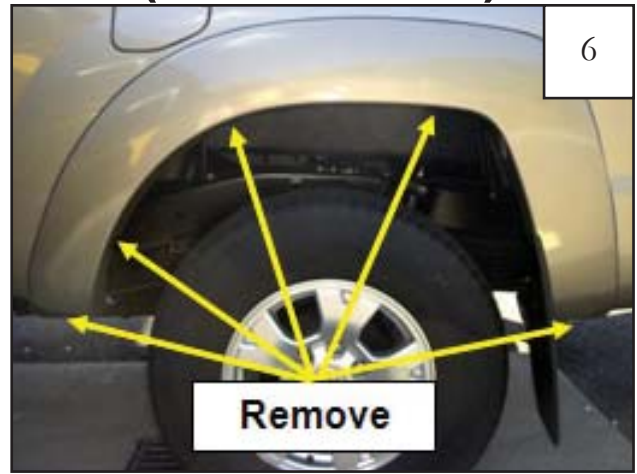
C. Apply Edge Trim to Front Bumper Piece if installing.



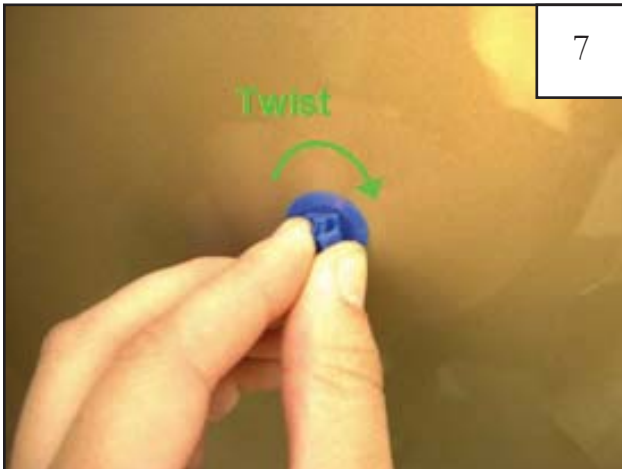
Rear Flare Installation Procedures (Driver's Side):



Remove three factory screws from mud flap. Discard mud flap.



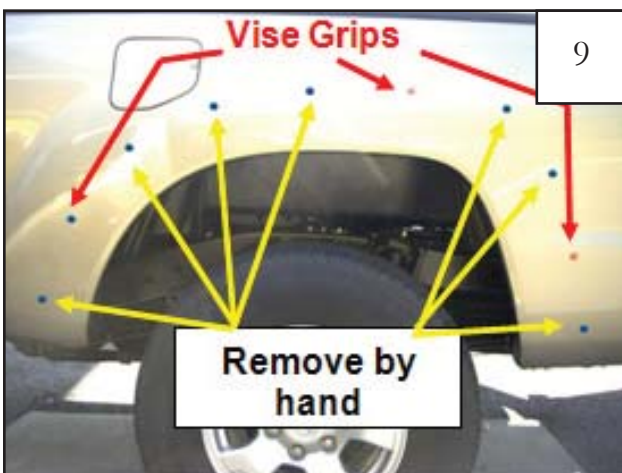
Remove five factory screws. Remove flare by pulling part away from side of vehicle.



Using a clockwise twisting motion, remove eight factory plastic clips from fender. See step 34.



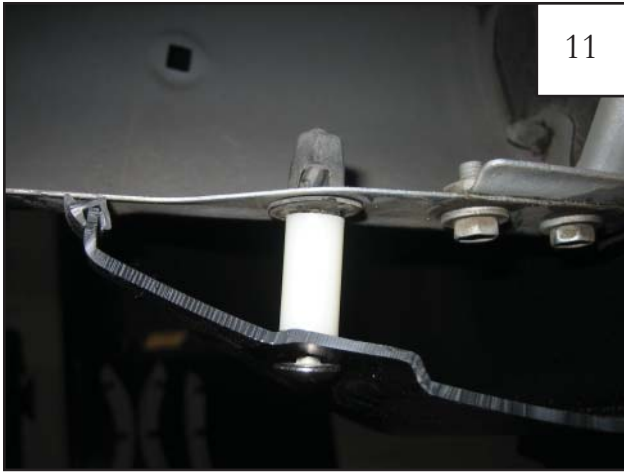
Remove three clips from fender using vise grips, pulling with a rocking motion. See step 34.



Clip locations.



Position flare on fender and install eight supplied hex head screws (SW1-0036) through holes in flare and into factory holes.



11

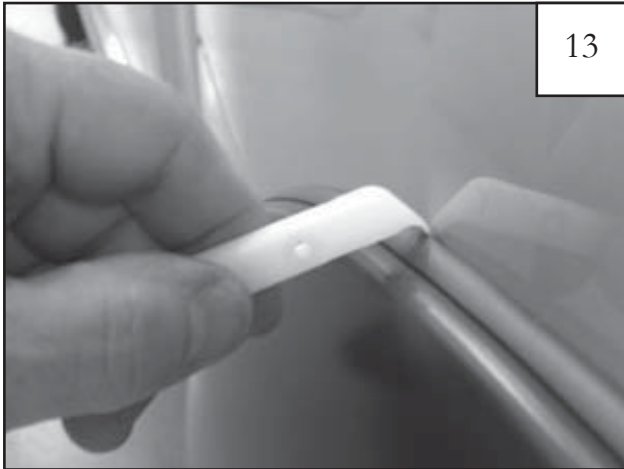
At bottom rear of flare, fasten flare to vehicle with a supplied 1-3/4" #14 Truss Head Screw (SW1-0034) through a 1" Spacer (SP1-0005).



12

Completed rear flare installation.

Edge Trim Tool Procedures:



13

Using supplied Edge Trim Tool (ET1-0002), seat edge trim against vehicle by hooking curved end under edge trim at one end of flare. Next, slide around outer edge of flare to the other end.



14

Using flat end of supplied Edge Trim Tool (ET1-0002), seat edge trim against flare by inserting straight end between edge trim and flare at one end. Next, slide around entire edge to the other end.