



Installation Instructions

717785

2015-20 FORD F-150 TRUCK*
2.7L, 3.5L ECO, 3.5L TIVCT & 5.0 ENGINE
2/4 WD & 145, 156.8 and 163" Wheelbases*

*Does NOT fit standard cab - 6'5 Bed

*Does NOT fit Ford Raptor

OVERVIEW:

1. Take a moment to read and understand these instructions before installing your Flowmaster performance system.

NOTE: Please inventory all parts now before continuing and if necessary, report any missing items to our tech line. This will avoid potentially stranding your vehicle until any missing replacement parts arrive.

ITM #	PART #	DESCRIPTION	QTY.
N/A	PK927	Hardware Package includes:	1
5	490HA	Front Clamp Hanger	1
6	MC300BS	3" Stainless Band Clamp	2
7	MC250BS	2½" Stainless Band Clamp	2
8	HA572	Universal Bracket	1
9	HW225	5/16-18 x ¾" Bolt	2
10	HW211	¾" x 2" Bolt	2
11	HW303	¾" Flat Washer	2
12	HW309	¾" Lock Washer	2
13	HW103	¾" Nut	2

ITM #	PART #	DESCRIPTION	QTY.
1	26688M	Inlet Pipe	1
2	26277M	Extension Pipe	1
3	72198-Z	Muffler	1
4	86467M	Exit Pipe	1

REMOVE STOCK EXHAUST SYSTEM:

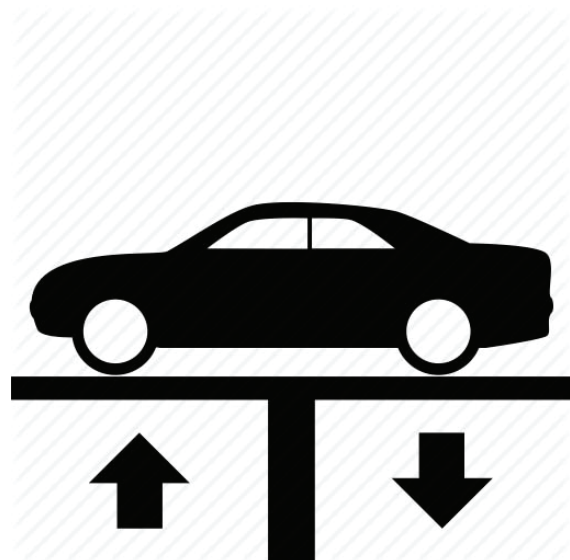
2. Raise vehicle up on a hoist or rack to working height. If you don't have access to a hoist or rack, support vehicle with jack stands.

WARNING:

Avoid serious burns! Allow your vehicle time to cool completely before touching any factory engine components.

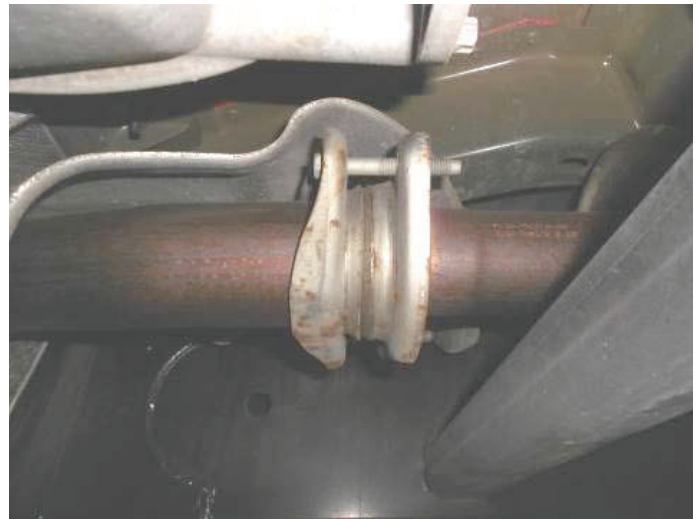
To ease preparation and installation of your new kit:

- Apply penetrating lubricant to mounts, bolts and clamps before you remove them.
- Use stands as necessary to support parts as you detach them from your vehicle and again as you install new parts.



- Remove (x2) bolts at front flange connection. With help, slide exhaust system rearward to disengage hangers from isolators on vehicle, then work it forward over rear axle.

NOTE: If you are working on ground, it may be easier to cut tailpipe off at muffler rear to simplify removal.



INSTALL FLOWMASTER EXHAUST SYSTEM:

- Remove nuts from stock and Flowmaster clamps, apply anti-seize compound to bolts and re-install nuts.

NOTE: The image in this step is intended for illustrative purposes only and may or may not accurately reflect components included in your kit.



- If your vehicle falls within the specifications listed below, apply the corresponding modifications or assembly combinations to this kit to ensure it will install properly.

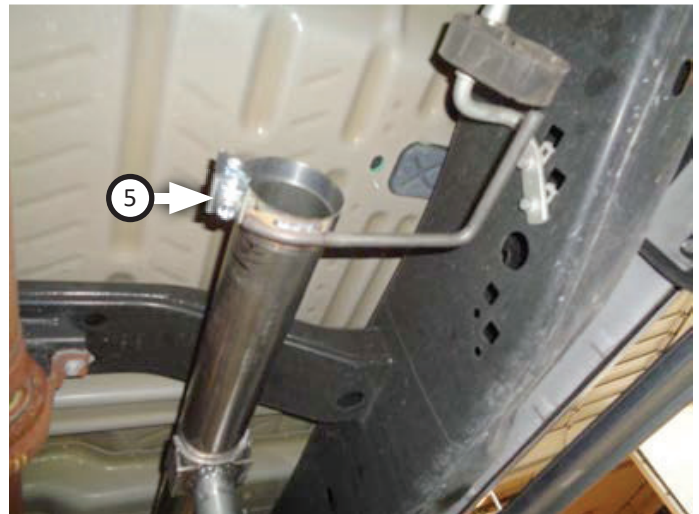
WHEEL BASE	BODY STYLE	BED LENGTH	INLET ASSY:	MODIFICATION
141"	Regular Cab	8'	Inlet Pipe only	Trim 4" from inlet pipe
145"	SuperCrew	5'5	Inlet Pipe only	None
145"	SuperCab	6'5	Inlet Pipe only	None
157"	SuperCrew	6'5	Inlet+Extension	Trim 6" from extension pipe
163"	SuperCab	8'	Inlet+Extension	None

6. Place **inlet pipe (1)** onto head pipe and fasten flanges with (x2 ea.) **bolts (10)**, **flat washers (11)**, **lock washers (12)** and **nuts (13)**. Tighten them enough to hold parts.



7. Slide **front clamp hanger (5)** over back of inlet pipe then insert it into factory isolator. Do not tighten clamp yet.

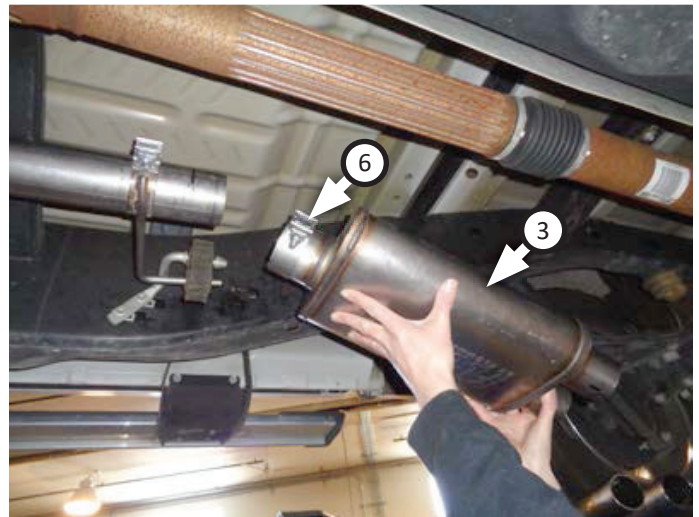
NOTE: Continue to next step if your frame hanger does not line up with clamp hanger.



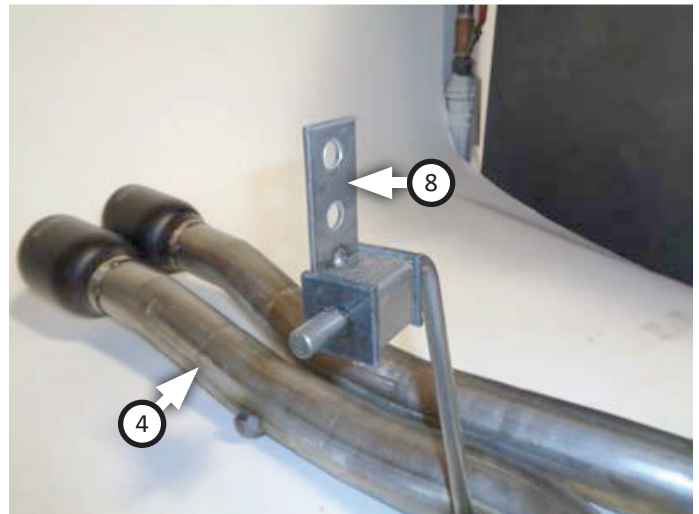
8. If your front frame mount doesn't align to properly connect to frame hanger, remove (x2) screws attaching mount to frame, move (x2) plate nuts to forward set of holes and remount hanger to frame.



9. If applicable, place **clamp (6)** onto **extension (2)** then connect it to inlet pipe.
10. Place **clamp (6)** onto **muffler (3)**, slide it 1¼" onto inlet or extension pipe and support with a stand. Level muffler and tighten clamp at inlet enough to hold parts.



11. Slide **universal bracket (8)** onto end of wire hanger on **exit pipe (4)**.



12. Place (x2) **clamps (7)** onto muffler then connect exit pipe to it, seated approximately 2". Tighten (x2) clamps just enough to hold parts.



13. Adjust exit pipes to desired distance from body, so angle cut on tips are properly positioned. Rotate bracket so it lays flat against inside of vehicle frame then use a center punch to mark center of (x2) holes on frame. Move hanger aside and drill each mark using a 1/8" drill bit. Finally use (x2) **bolts (9)** to secure hanger to frame and tighten securely.



14. Adjust exhaust components for fit; maintaining 3/4" clearance and compensating for suspension, travel and vibration.
15. Recommended: Secure slip-fit connections with a 1-inch tack weld then spray high-temp paint over each weld to prevent rust and premature corrosion.



Congratulations, the installation of your FLOWMASTER performance exhaust system is now complete!





Installation Diagram

717785

2015-20 FORD F-150 TRUCK*
2.7L, 3.5L ECO, 3.5L TIVCT & 5.0 ENGINE
2/4 WD & 145, 156.8 and 163" Wheelbases*

*Does NOT fit standard cab - 6'5 Bed

*Does NOT fit Ford Raptor

