



OUTLAW S E R I E S

Installation Instructions

817760

**2015-21 DODGE CHALLENGER SRT 392,
HELLCAT, R/T SCAT PACK
6.2L & 6.4L ENGINE
2017-20 5.7L ENGINE**

Fits vehicles with OE Active Exhaust Valves.

OVERVIEW:

1. Take a moment to read and understand these instructions before installing your Flowmaster performance system.

NOTE: Please inventory all parts now before continuing and if necessary, report any missing items to our tech line. This will avoid potentially stranding your vehicle until any missing replacement parts arrive.

ITM #	PART #	DESCRIPTION	QTY.
1	26522S	Scavenger Pipe Assembly	1
2	26626S	Right Tailpipe	1
3	26628S	Left Tailpipe	1
4	15430-253	Outlaw Mufflers	2

ITM #	PART #	DESCRIPTION	QTY.
N/A	PK839	Hardware Package includes:	1
5	MC234BS	2¾" Stainless Band Clamp	2
6	MC300BS	3" Stainless Band Clamp	6
7	HW502	⅞" Hanger Keeper	2
8	HW512	10-32 x ½" Standoff	6
9	HW243	#10-32 x ¼" Screw	6
10	HW240	#10-32 x ¾" Screw	6
11	HW315	#10 Flat Washer	6
N/A	PK1051	5.7L Adapter Package includes:	1
12	TB933S	2½" - 3" Adapter	2
13	MC250BS	2½" Stainless Band Clamp	2

REMOVE STOCK EXHAUST SYSTEM:

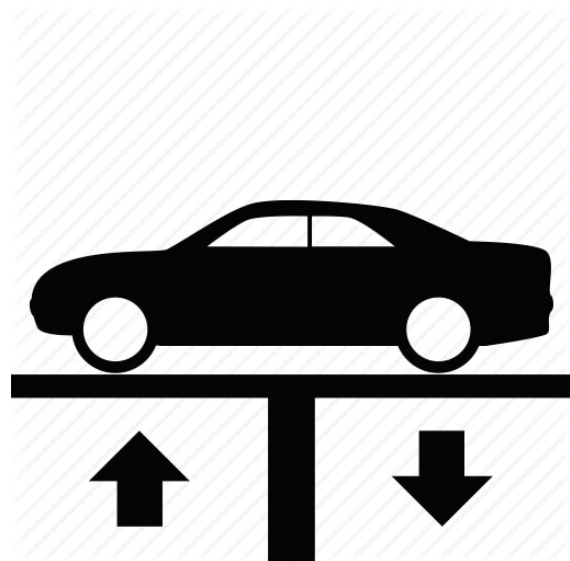
2. Raise vehicle up on a hoist or rack to working height. If you don't have access to a hoist or rack, support vehicle with jack stands.

WARNING:

Avoid serious burns! Allow your vehicle time to cool completely before touching any factory engine components.

To ease preparation and installation of your new kit:

- Apply penetrating lubricant to mounts, bolts and clamps before you remove them.
- Use stands as necessary to support parts as you detach them from your vehicle and again as you install new parts.



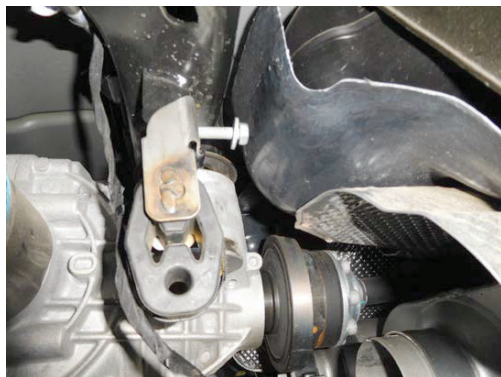
3. Unplug wires from exhaust valve actuators on side of each tailpipe. Remove (x3) hangers from isolators and unclip grounding strap from right rear hanger. Loosen clamps behind catalytic converters, then with an assistant, carefully remove exhaust system from vehicle.



4. Remove (x3) nuts securing actuator to mounts then remove actuator and spring from mount on each tailpipe.



5. Locate exhaust mounts forward of rear differential. Remove bolts securing hanger to frame, lift it slightly to clear locating slot and rotate hanger 180 degrees. Then replace hanger, reinstall bolt and tighten securely.



INSTALL FLOWMASTER EXHAUST SYSTEM:

- Remove nuts from stock and Flowmaster clamps, apply anti-seize compound to bolts and re-install nuts.

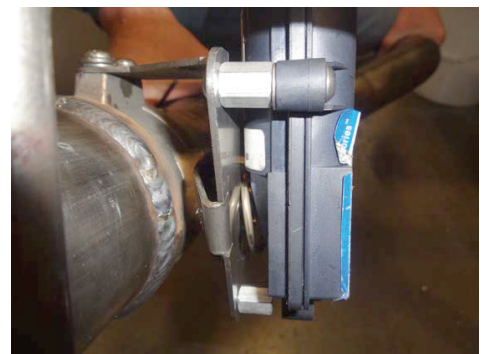
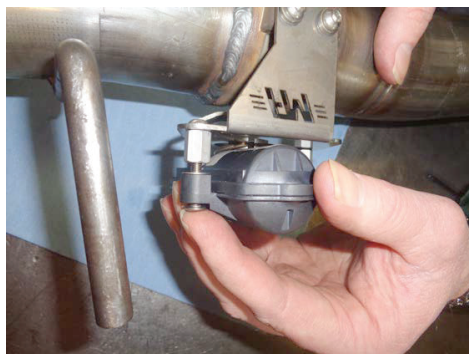
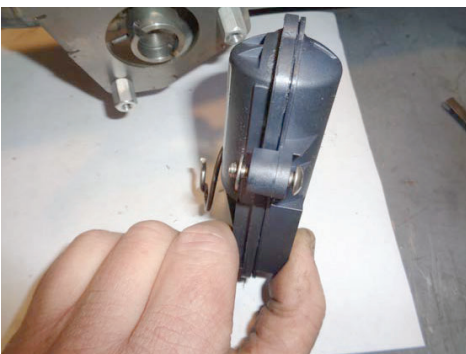
NOTE: The image in this step is intended for illustrative purposes only and may or may not accurately reflect components included in your kit.



- Apply threadlock to fasteners then thread (x3) **screws (9)** through mounting bracket on tailpipe and into (x3) **standoffs (8)**. Tighten them fully then repeat step on remaining other tailpipe.

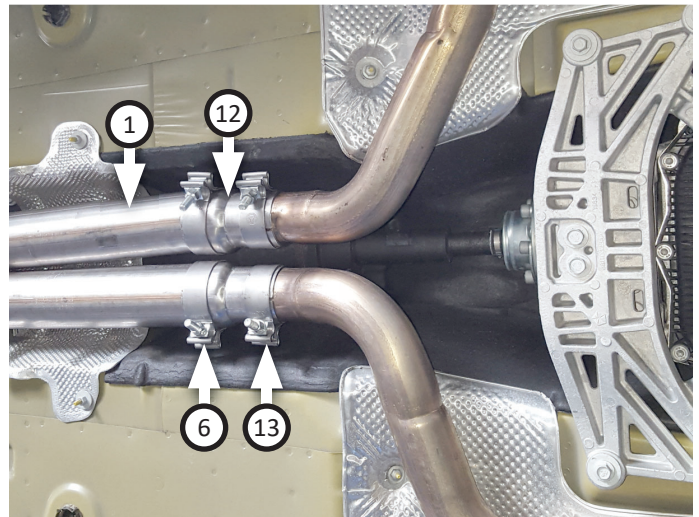


- Place (x3) **screws (10)** into actuator and through (x3) **flat washers (11)**. Fasten assembly to mount on tailpipe, aligning actuator spring into slot on mount before tightening fasteners. Repeat step on remaining tailpipe.



WARNING: Complete this step **ONLY** to adapt kit for 2017-20 model year vehicles with 5.7L engine. Otherwise, skip to step 10.

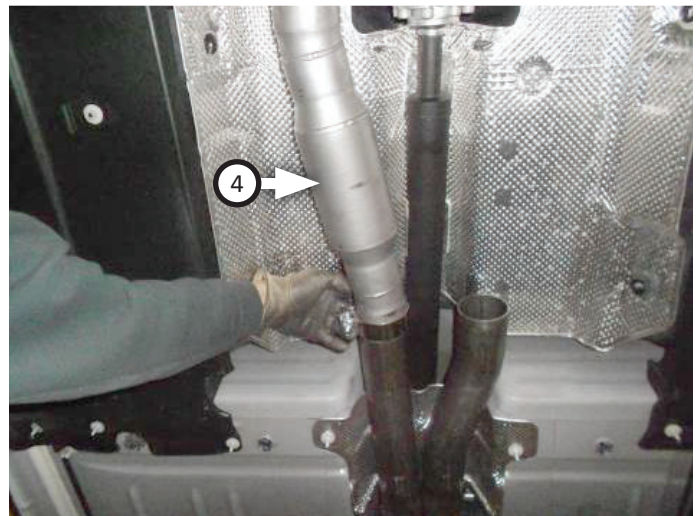
9. Trim off reduction end of **scavenger pipe (1)** then fit both **adapters (12)** onto it with two **clamps (6)**. Fasten assembly onto factory head pipes with two **clamps (13)** (offset outlet pipe oriented to passenger side).



10. Place (x2) **clamps (5)** onto **scavenger pipe (1)** inlets then slide it 2" onto stock head pipes (offset outlet pipe should be oriented to passenger side). Level and center assembly in drive line tunnel then tighten clamps just enough to hold parts.



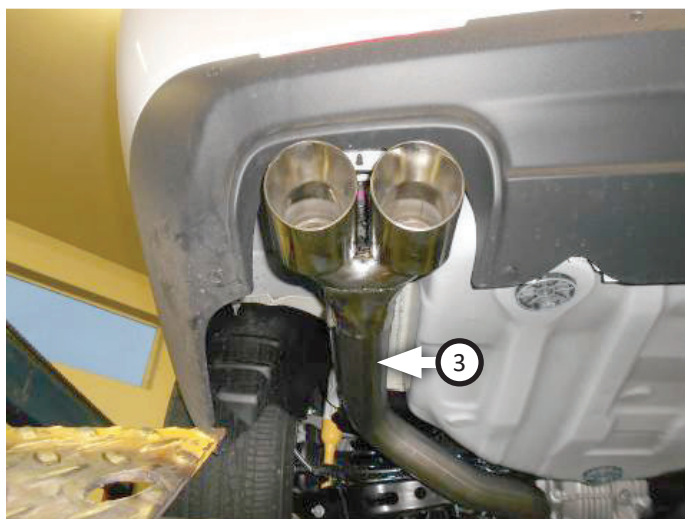
11. Place (x2) **clamps (6)** onto both **muffler (4)** inlets then connect them to scavenger pipe, sliding them 1¾" deep. Level mufflers and tighten clamps just enough to hold parts but still allow for adjustment.



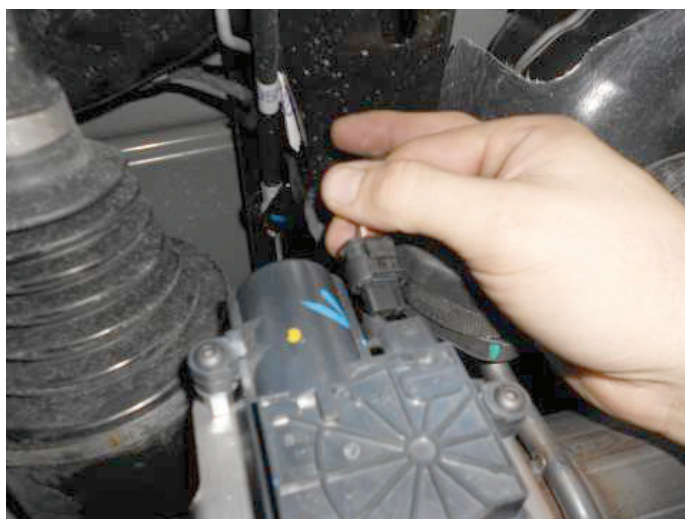
NOTE: Complete this step for **right (2)** tailpipe as well.

12. Place **clamp (6)** onto left muffler then connect **left tailpipe (3)** to it while inserting hangers into isolators. Adjust tailpipe so tip is level and centered in bumper cut-out then tighten clamp just enough to hold parts.

NOTE: The middle hanger on SRT 392 models will not be used and can be removed if desired.



13. Reconnect (x2) electrical plugs (removed step 3) back onto tailpipe actuators on Flowmaster tailpipes.
14. Adjust exhaust components for fit; maintaining ½" clearance and compensating for suspension, travel and vibration then tighten all clamps. Finally, fit (x2) **hanger keepers (7)** onto each sideways hanger.
15. Recommended: Secure slip-fit connections with a 1-inch tack weld then spray high-temp paint over each weld to prevent rust and premature corrosion.



Congratulations, the installation of your FLOWMASTER performance exhaust system is now complete!





OUTLAW

S E R I E S

Installation Diagram
817760
2015-21 DODGE CHALLENGER SRT 392,
HELLCAT, R/T SCAT PACK
6.2L & 6.4L ENGINE
2017-20 5.7L ENGINE
Fits vehicles with OE Active Exhaust Valves.

