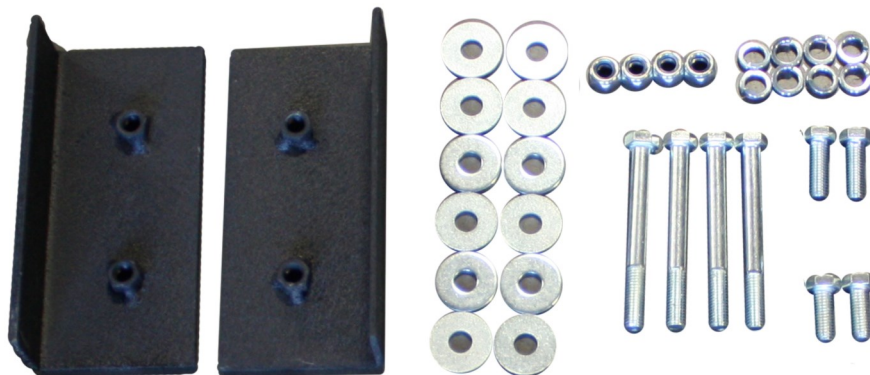




REAR BUMPER

INSTALL MANUAL FOR 2007-2016

JEEP WRANGLER ALL MODELS.

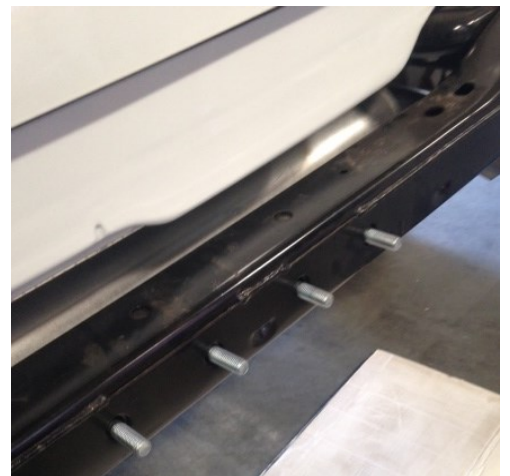


Rear Bumper Installation Instructions

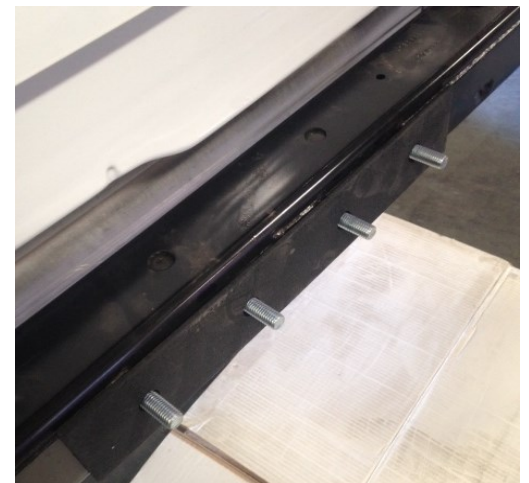
- 1) Remove factory rear bumper, (this includes all tow hitch receivers and recovery hooks)
- 2) Locate nut plates and insert them into the frame rails and line up the nuts to the factory holes in the frame.



- 3) Next insert the 4 large 3"x 12mm through bolts through the frame rail with the threads facing the rear of the Jeep, make sure to put the washers onto the bolts as well. (You'll have to put the head of the bolt above the exhaust canister but to get it into the hole but it will fit)



- 4) Place the spacer plate over the bolts (Not all model bumpers use a spacer plate)



5)) Have a friend or two lift the bumper with you and place the holes in the middle of the bumper over the bolts sticking out of the rear of the frame and place the nylon nuts onto the 4 through bolts sticking out of the rear to hold the bumper to the frame. Then loosely place bolts through the bumper and into the nut plates you previously installed into the frame to hold the bumper in place. Note: Once you have the side bolts into place let the bumper down gently so it doesn't move and damage the body of your Jeep.



6) Next tighten the through bolts in the rear cross-member first to allow the bumper to properly align itself. Torque to 60 ft/lbs.



7) Then tighten the 4 side bolts that are loosely inserted into the nut plates. Torque to 60 ft/lbs



8) Install D Rings and enjoy.

