

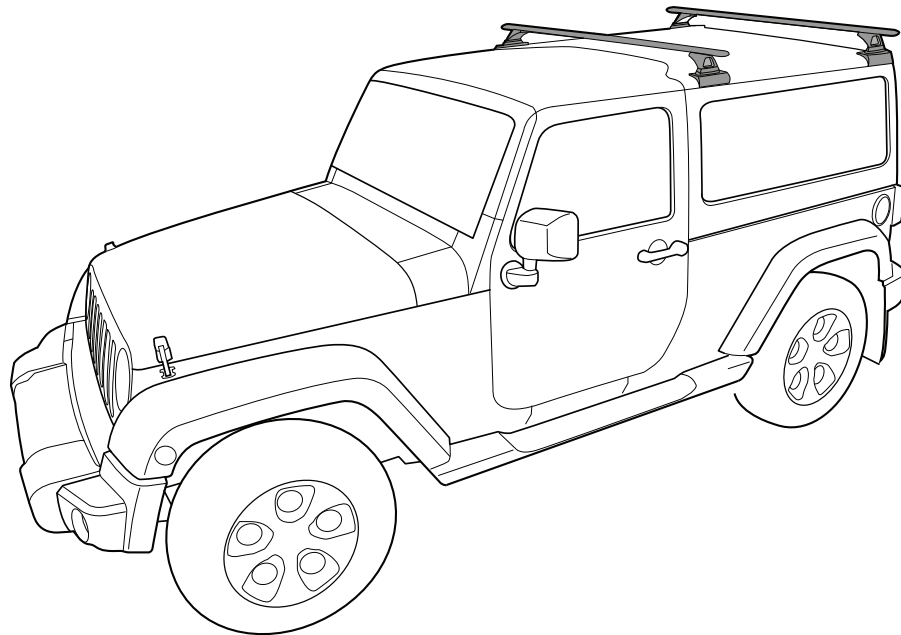


CONTROLLED

RHINO-RACK

Jeep JK 2dr Backbone - RJKB2

Fit Time: 1.5 Hours



IMPORTANT INFORMATION

Maximum carrying capacity:

On Road Cargo Allowance	Off Road Cargo Allowance	Static Allowance	Roof Allowance	Rack Weight
95kg / 209lbs	63kg / 138lbs	240kg / 530lbs	100kg/ 220lbs	5kg / 11lbs

- Off Road:** Any driven path taken that is not on sealed (tarred / bitumen) and maintained
 - Roof Allowance:** Total permissible weight attached to the roof of the car. This is inclusive of the weight of the roof rack system
 - Cargo Allowance:** Total permissible weight allowed on top, and attached to roof racks whilst the vehicle is in motion
 - Static Allowance:** Total permissible weight allowed on top, and attached to roof racks whilst the vehicle is stationary
- Please refer to your vehicle manufacturers handbook for maximum carrying capacity. Always use the lower of the two figures. Load must be evenly distributed over the entire Pioneer. Weight of roof rack accessories is to be included in cargo allowance.

Torque settings

Unless stated otherwise in these instructions, all fasteners should be set to the following torque settings - M6: 4-5Nm (3-4lbs/ft), M8: 8-10Nm (6-7.5lbs/ft) and M10: 16-18Nm (12-13lbs/ft).

Warning:

- Check Part No. and/ or Kit is correct for use with your vehicle
- Do not attempt to fit the rack system to your vehicle unless you fully understand these fitting instructions. Please direct any questions regarding fitting to the dealer from where the roof racks were purchased.
- **Use only non-stretch fastening ropes or straps.**
- The handling characteristics of the vehicle changes when you transport a load on the roof. For safety reasons we recommend you exercise extreme care when transporting wind-resistant loads. Special consideration must be taken into account when cornering and braking.
- Although the system is tested and approved to AS1235-2000 / ISO 11154, off-road conditions can be much more rigorous. Extreme care must be taken in off road conditions

Recommendations:

It is essential that all bolt connections be checked after driving a short distance when you first install your roof racks. Bolt connections should be checked again at regular intervals (once a week is enough, depending on road conditions, usage, loads and distances travelled). You should also check the roof racks each time they are re-fitted. Always make sure to fasten your load securely. Please also ensure that all loads are evenly distributed and that the centre of gravity is kept as low as possible and must be entirely contained within the extents of the roof racks.

Note for Dealers and Fitters:

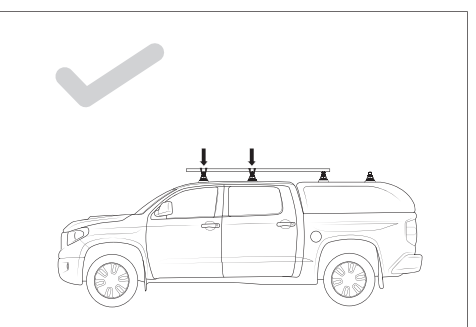
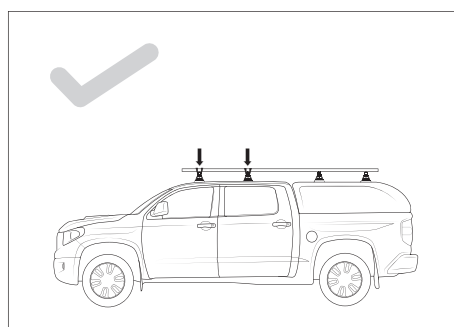
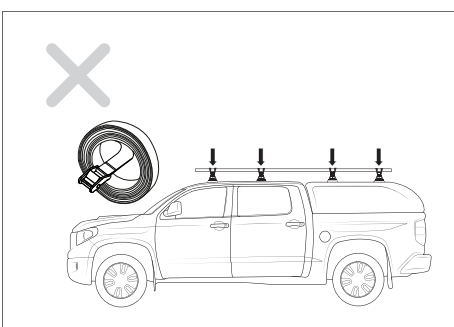
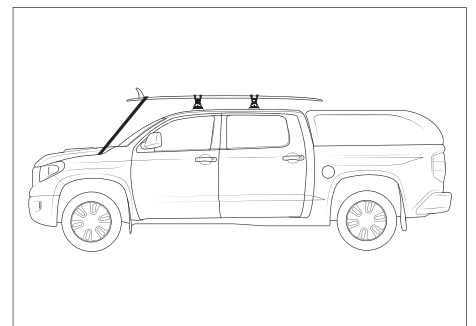
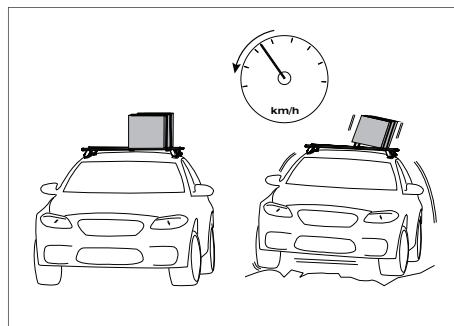
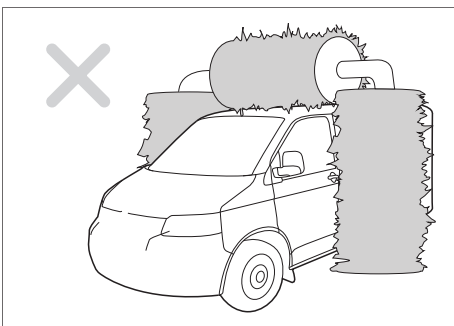
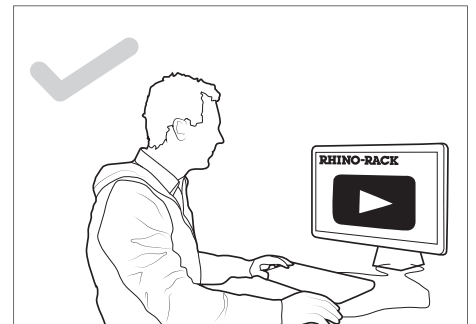
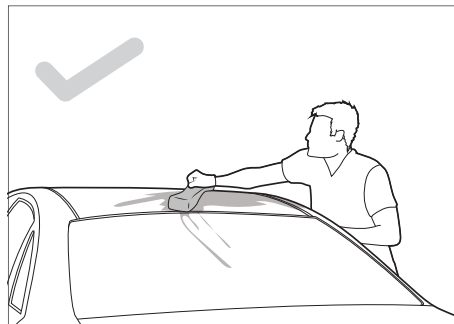
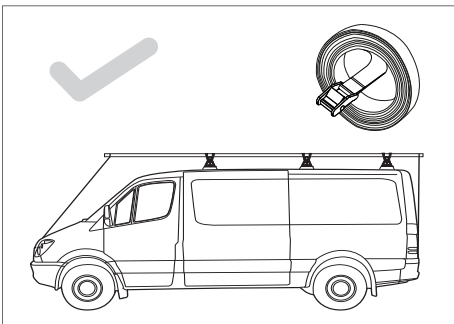
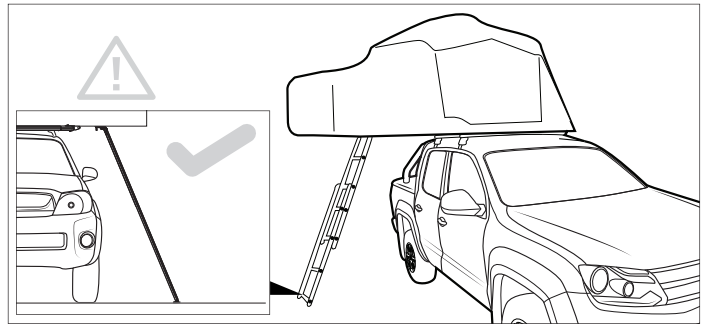
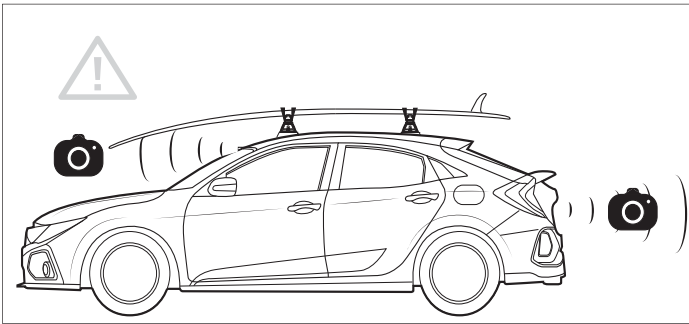
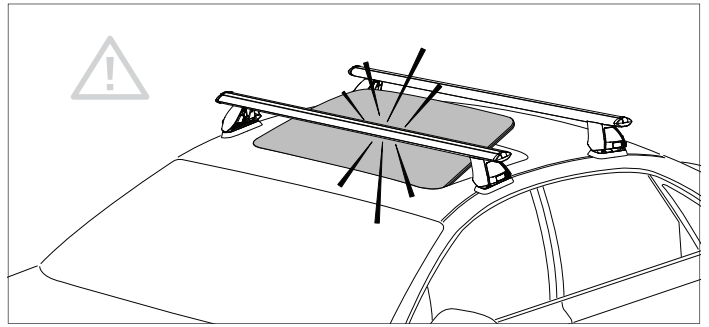
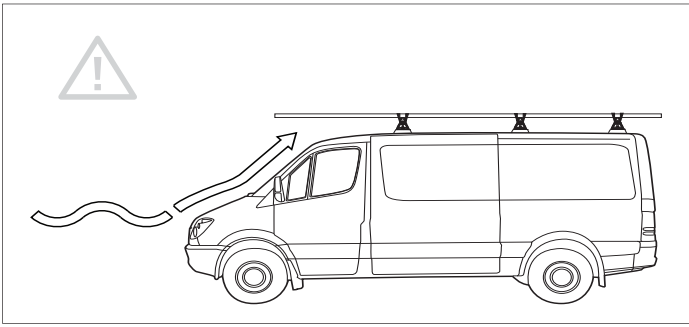
It is your responsibility to ensure these fitting instructions are given to the end user or client

Rhino-Rack, 22 Hanson Pl, Eastern Creek
NSW 2766, Australia
(02) 8846 1900
rhinorack.com.au

Document No: R438
Issue No: 08
Issue Date: 23/05/2019

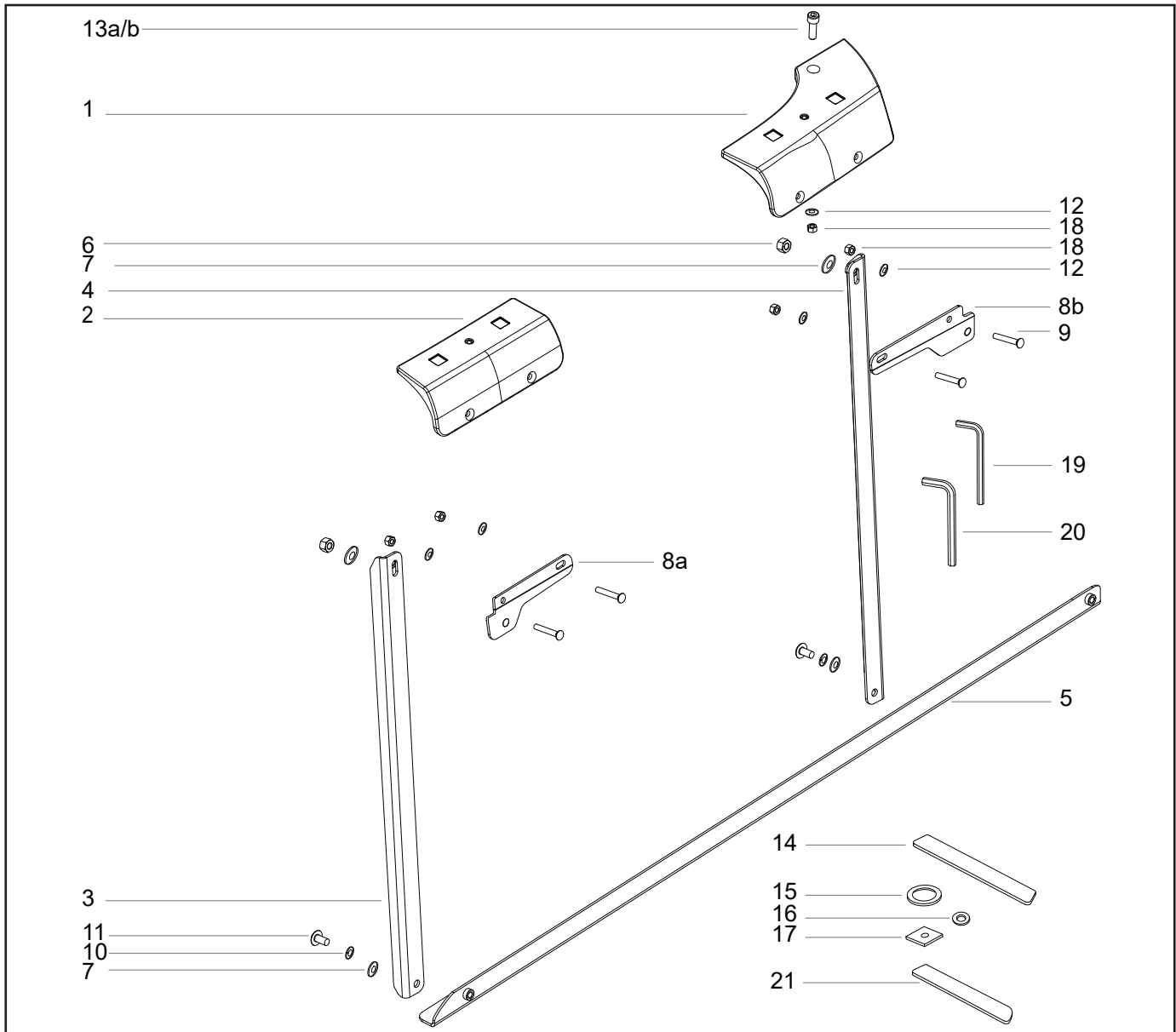
These instructions remain the property of Rhino-Rack Australia Pty. Ltd. and may not be used or changed for any other purpose than intended.

Jeep JK 2dr Backbone - RJKB2



Jeep JK 2dr Backbone - RJKB2

Parts List



Item	Component Name	Qty R	Qty L	Part No.
1	Rear Bracket	1	1	CA1274
2	Middle Bracket		2	CA1275
3	Internal Support Vertical Front		2	CA1358
4	Internal Support Vertical Rear		2	CA1280
5	Internal Support Base	1	1	CA1324

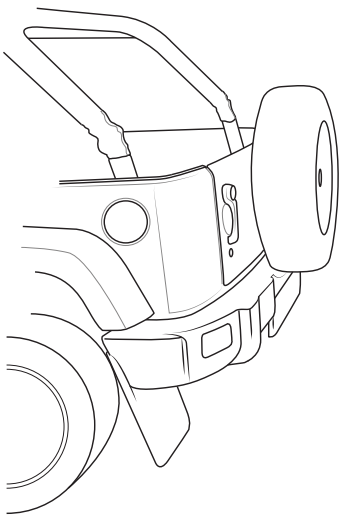
Tools Required:

- 10mm Spanner
- 13mm Spanner
- Tape Measure
- Marker Pen
- 4mm Allen Key (supplied)
- 5mm Allen Key (supplied)
- Support Stands
- Drill
- 3.0mm Drill Bit
- 6.5mm Drill Bit

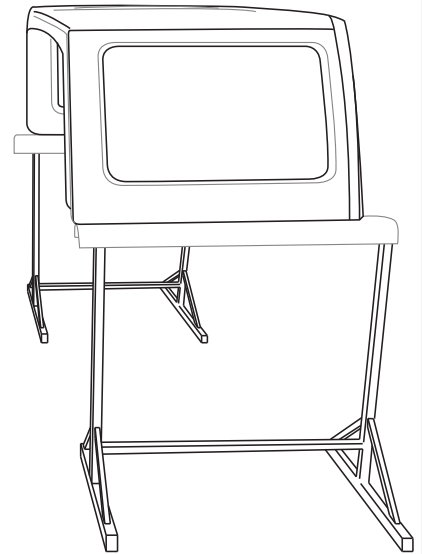
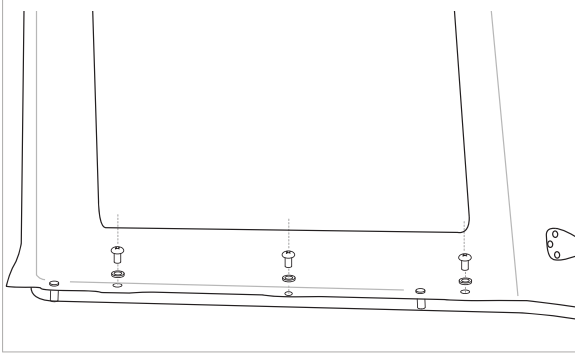
Item	Component Name	Qty	Part No.
6	M8 Nyloc Nut Black	4	N043
7	M8 Flat Washer Black	8	CA1068
8a	Bracket Fixture Plate Front	2	CA1325
8b	Bracket Fixture Plate Rear	2	CA1282
9	M6 x 30 Socket HD Bolt Black	8	B211
10	M8 Spring Washer Black	4	W019-Blk
11	M8x20 Hex Setscrew Black	4	B020-Blk
12	M6 Flat Washer Black	10	W054-Blk
13a	M6 x 30 Socket HD	2	B210
13b	O-ring	2	C347
14	Middle Bracket Foam	2	CA1284
15	Bracket O Foam L	2	CA1285
16	Bracket O Foam S	4	CA1286
17	Bracket Foam Square	2	CA1287
18	M6 Nyloc Nut Blk	10	N069
19	4mm Allen Key	1	H001
20	5mm Allen Key	1	H002
21	End Bracket Rear Foam	2	-
22	Instructions	1	R438

Jeep JK 2dr Backbone - RJKB2

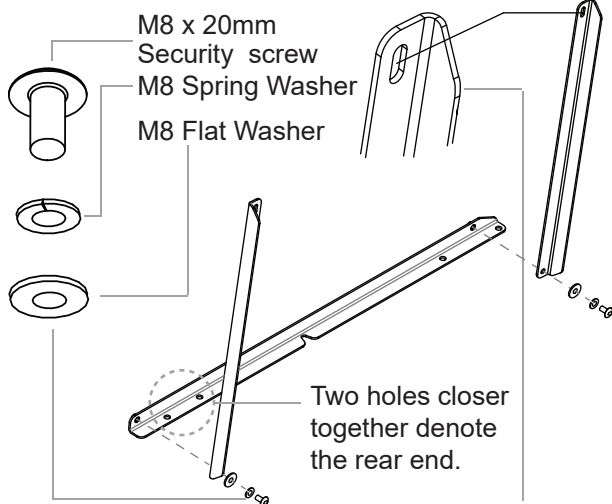
1 Remove the Hard Top (as per manufacturer's instruction) and place onto a stable, safe working area.



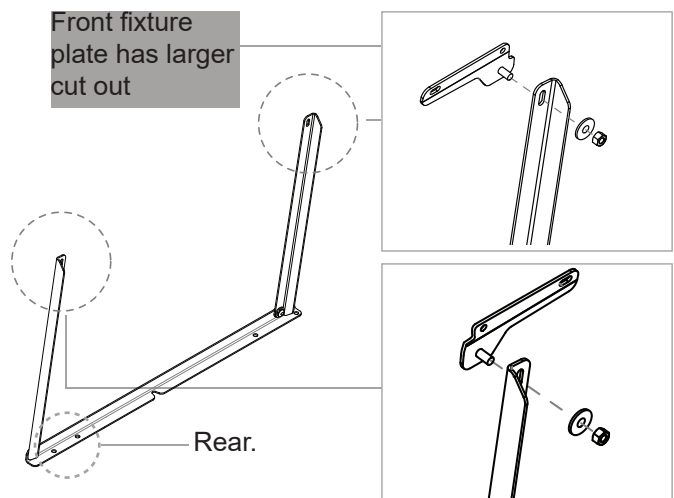
Hardware will have to be removed from inside Hard Top.



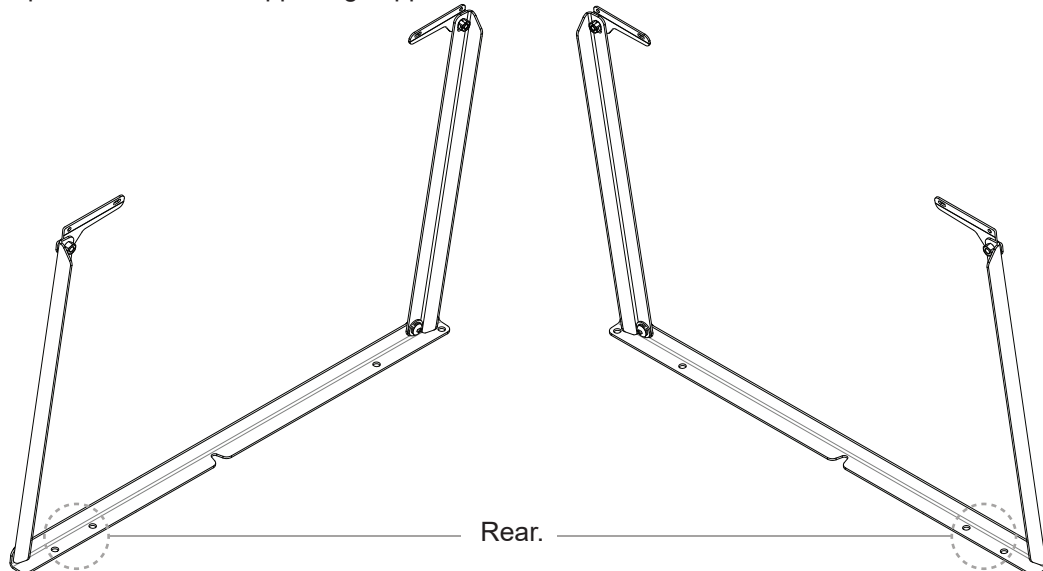
2a Assemble the Support Struts as shown. Finger tighten. Check part ID to make left and right side supports.



2b Attach item 8a,b to the arms as shown, using an M8 washer and M8 an Nyloc nut. Finger tighten.

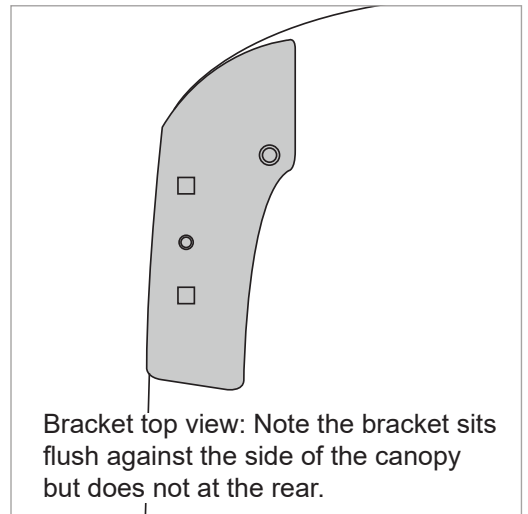
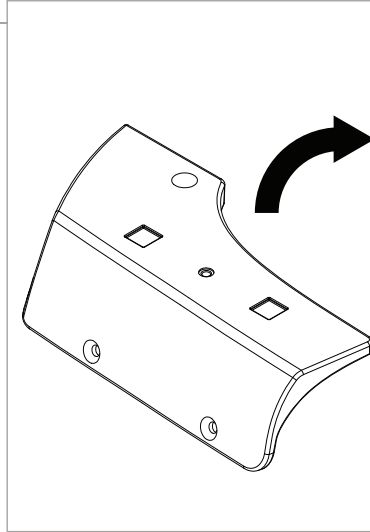
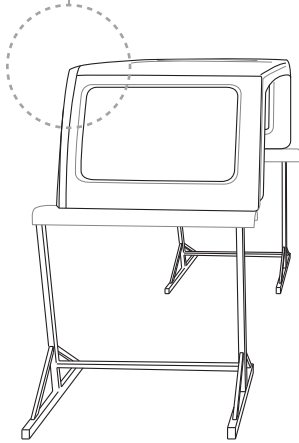


3 Repeat the process for for the opposing support strut.

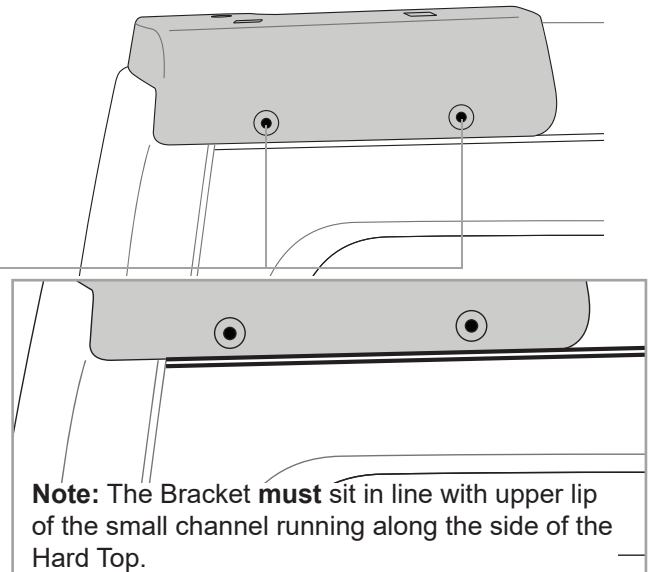
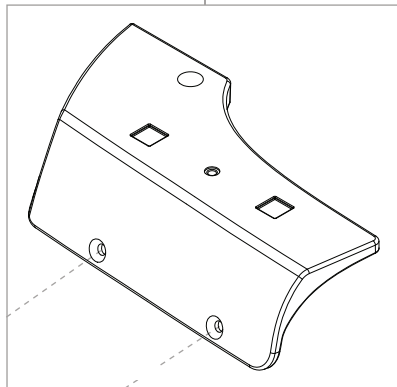
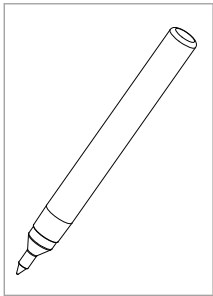


Jeep JK 2dr Backbone - RJKB2

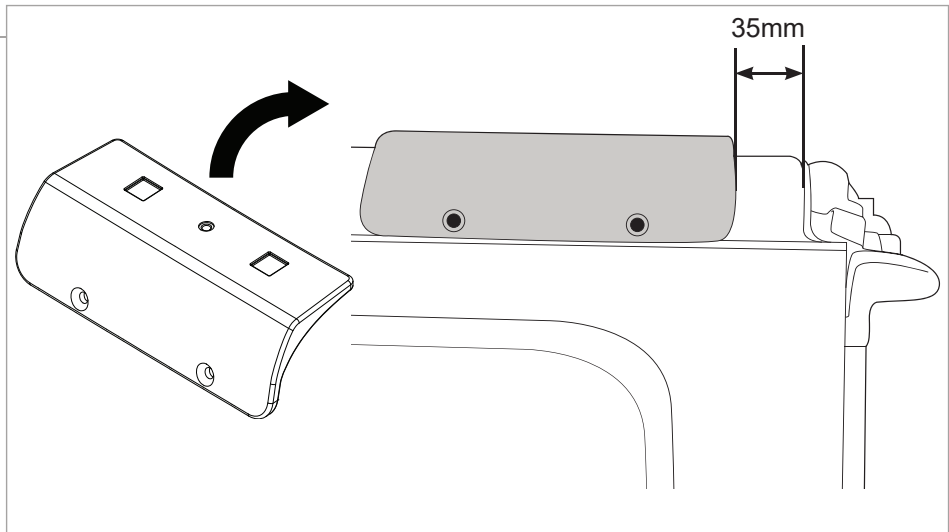
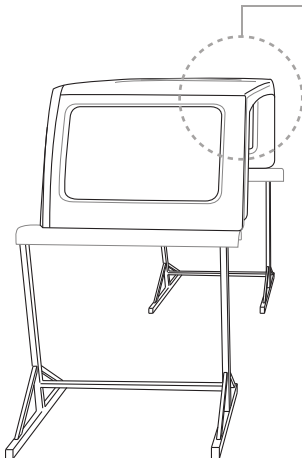
- 4** Align the REAR bracket with the REAR of the Hard Top. Line the bracket flush with the contour of the Hard Top as show.



- 5** With bracket aligned, spot mark the bracket position as shown. It is important to be accurate when marking. Always mark the centre of the hole.

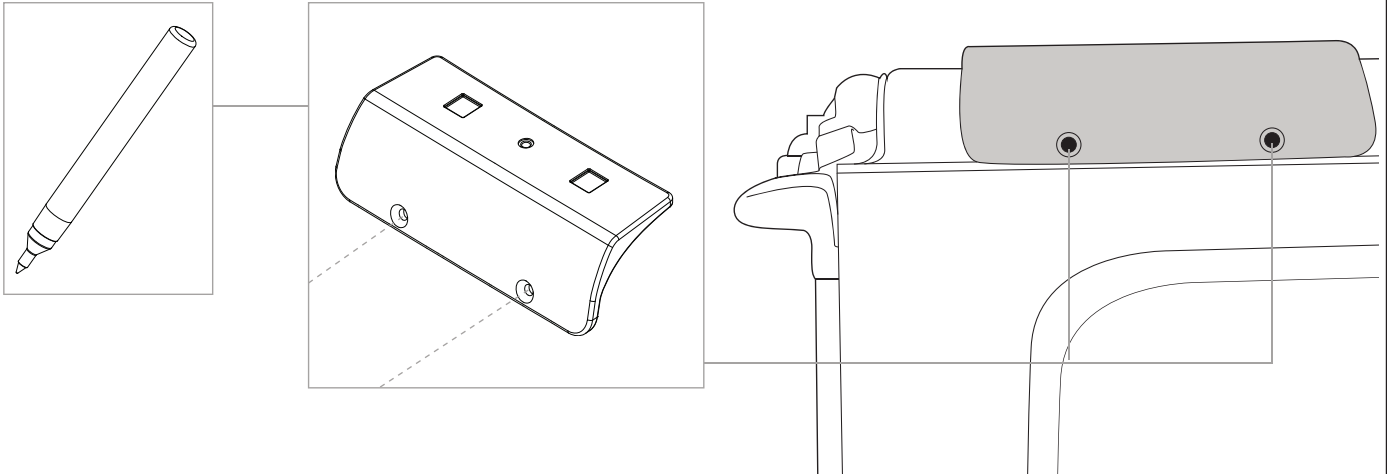


- 6** Align the FRONT Bracket **35mm** back from where the hard top meets the rubber seal at the front of the canopy.

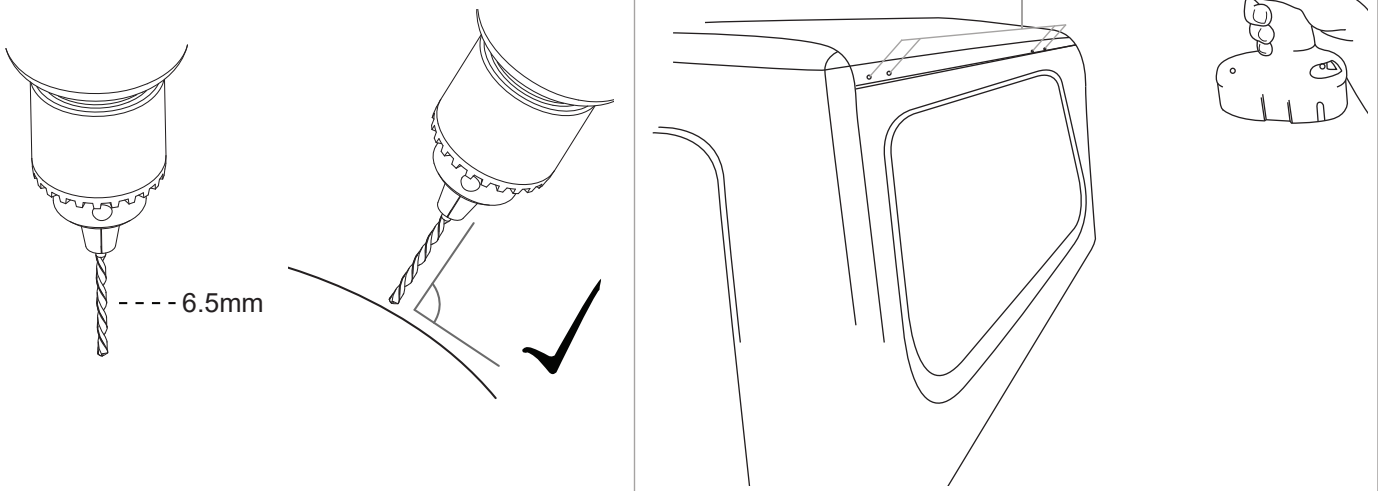


Jeep JK 2dr Backbone - RJKB2

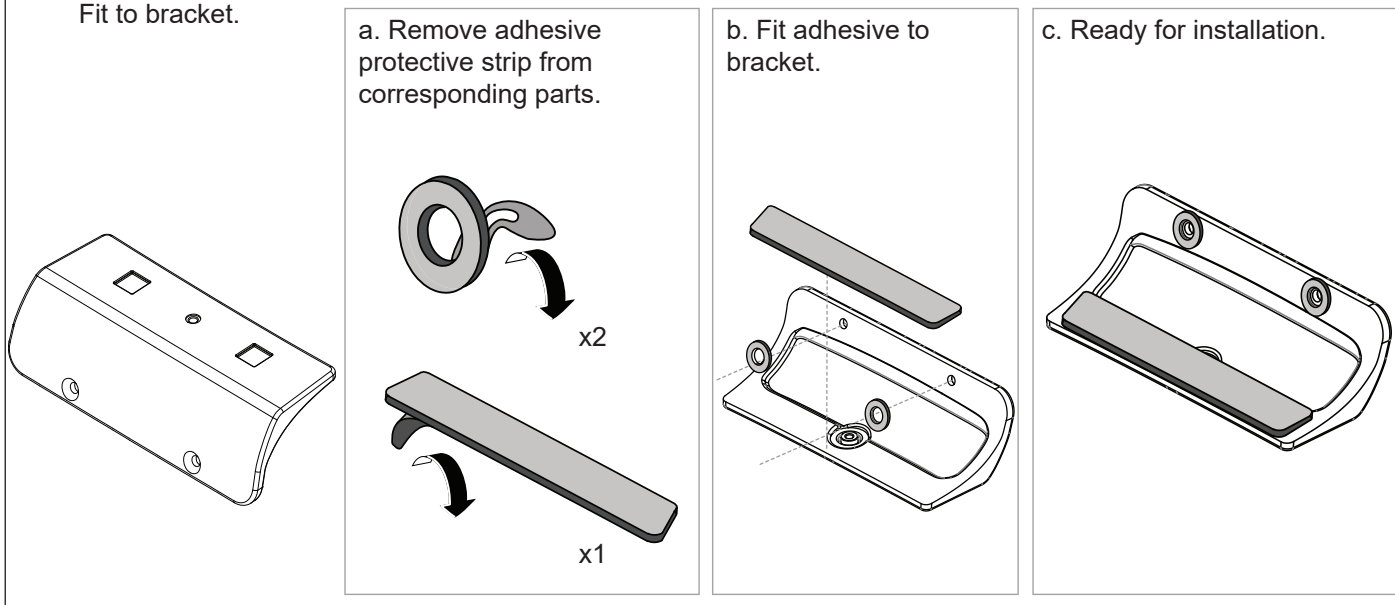
7 With the FRONT Bracket aligned, spot mark the bracket position as shown.



8 Using a 6.5mm drill bit, drill **ALL** holes. Angle drill when completing so that it is perpendicular to the roof.

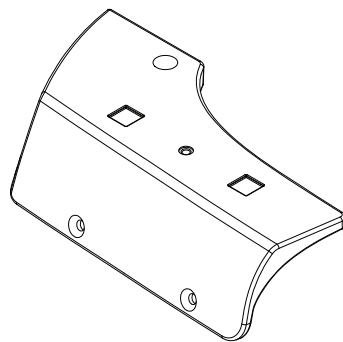


9 With relation to the FRONT Bracket, take corresponding foam pads and remove the protective strip as shown. Fit to bracket.

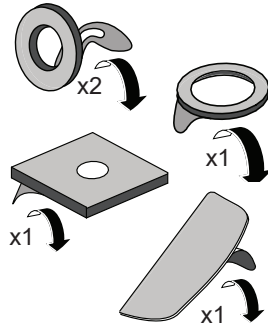


Jeep JK 2dr Backbone - RJKB2

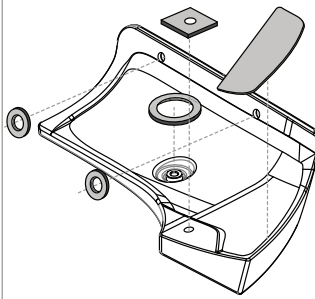
- 10** With relation to the Rear Bracket, take corresponding foam pads and remove the protective strip as shown. Fit to bracket.



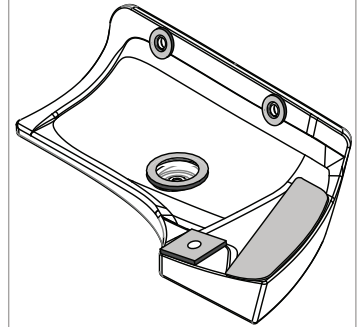
a. Remove adhesive protective strip from corresponding parts.



b. Fit adhesive to bracket.



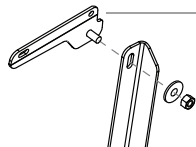
c. Ready for installation.



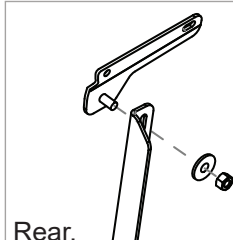
Note: Repeat the previous steps 4 to 10, for the opposing side of the Hard Top

- 11** With assistance to hold the Support Strut in place, set the assembly on the inside of the Hard Top as shown.

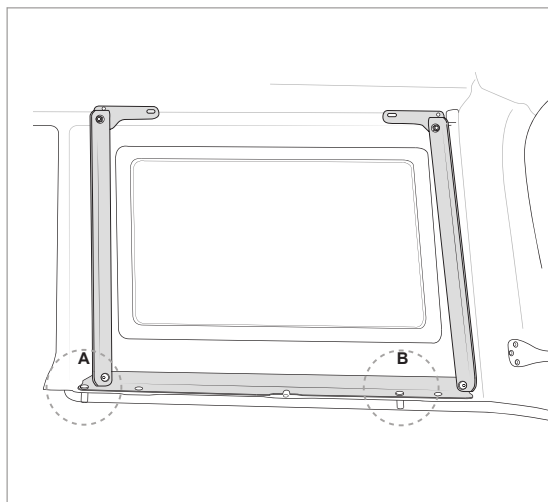
Front.



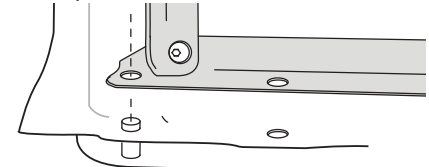
Front fixture plate has larger cut out



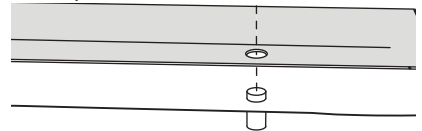
Rear.



A. The Support Strut will slot onto the Hard Top studs as shown.

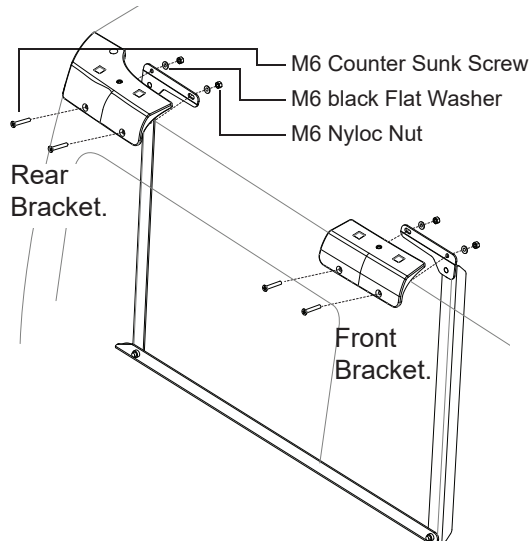


B. The Support Strut will slot onto the Hard Top studs as shown.

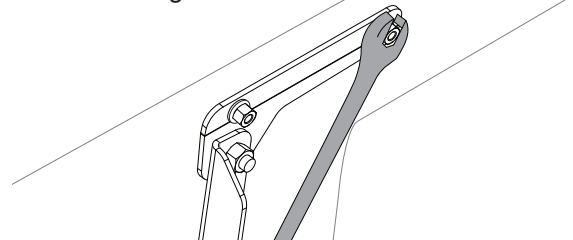


- 12** With assistance to hold the Support Strut in place, move to the outside of the Hard Top. Place the REAR Bracket in place. Insert M6 counter sunk screws, fastening from the inside with M6 black flat washers and M6 Nyloc nuts. Hold the nyloc nuts in place with a 10mm spanner. Tighten from the outside with a 4mm allen key. Repeat this process for the FRONT Bracket.

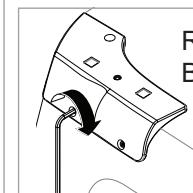
1. Assemble as shown. Finger tighten to fix in place.



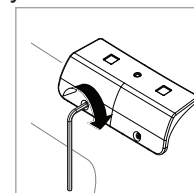
2. Hold Nyloc Nut with a spanner, allowing the bracket to be tightened from the outside.



3. Fix with a 4mm Allen Key.



Rear Bracket.

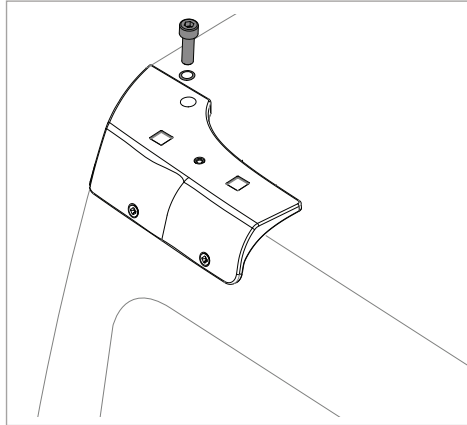
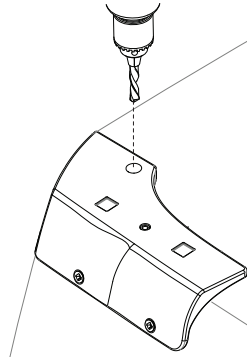


Front Bracket.

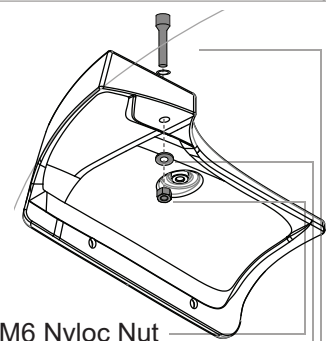
Jeep JK 2dr Backbone - RJKB2

- 13** With Rear Bracket now secure, drill out the top fixture point with a 6.5mm (1/4") bit. Use an M6 socket HD bolt with O'ring, an M6 flat washer and an M6 nyloc nut to fix the bracket.

Drill out fixture point.

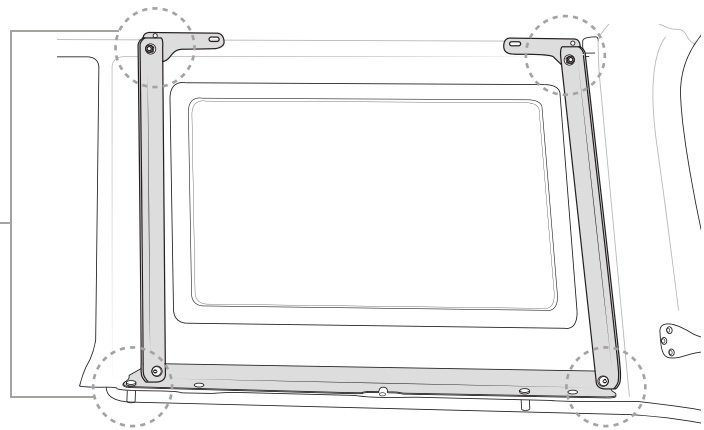
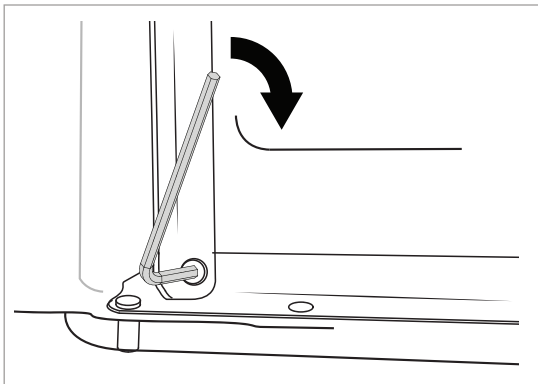


View from inside Hard Top



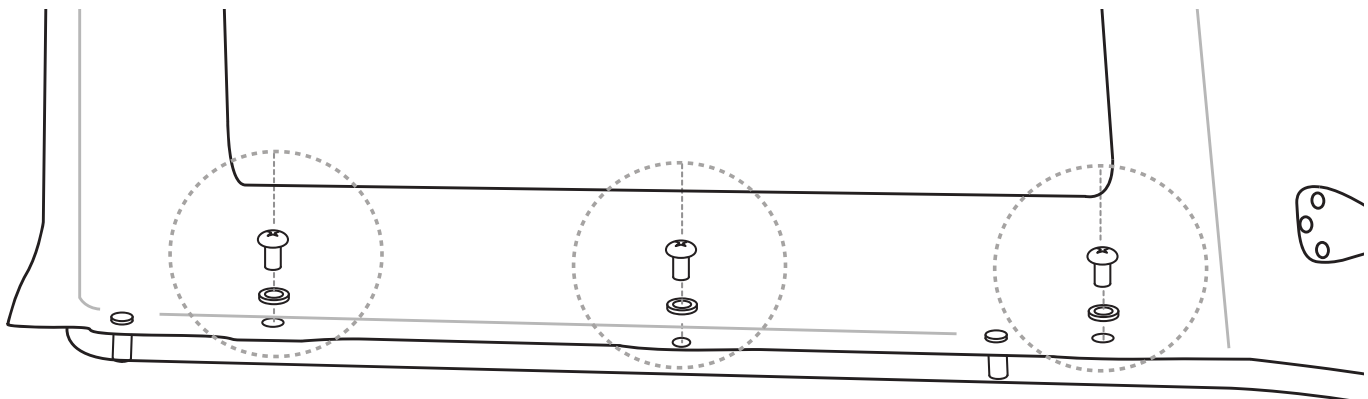
M6 Nyloc Nut
M6 Flat Washer
M6 socket Hd Bolt

- 14** Tighten supports with a 5mm allen key. Top of supports will require a 13mm spanner.



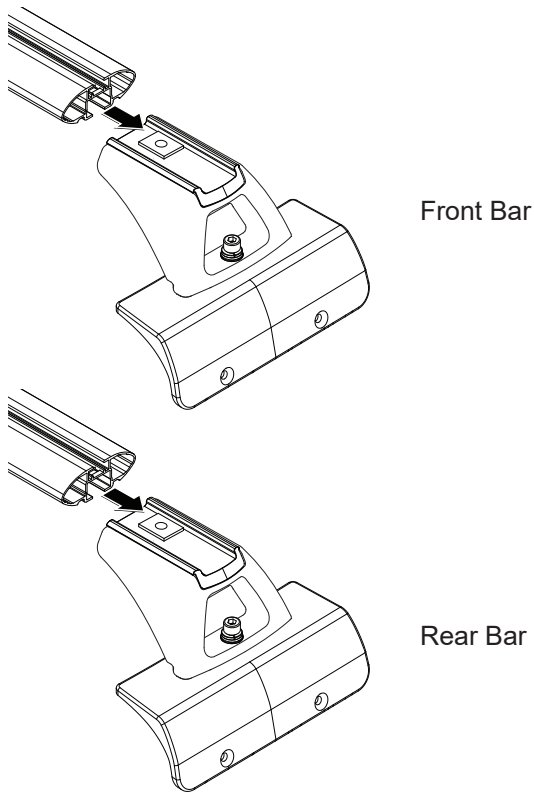
Note: Repeat previous steps 11-14 for the opposing side of the Hard Top

- 15** Place the Hard Top back onto the Jeep (refer to manufacturers instructions). Replace the hardware removed in step 1 on both sides of the inner Hard Top.

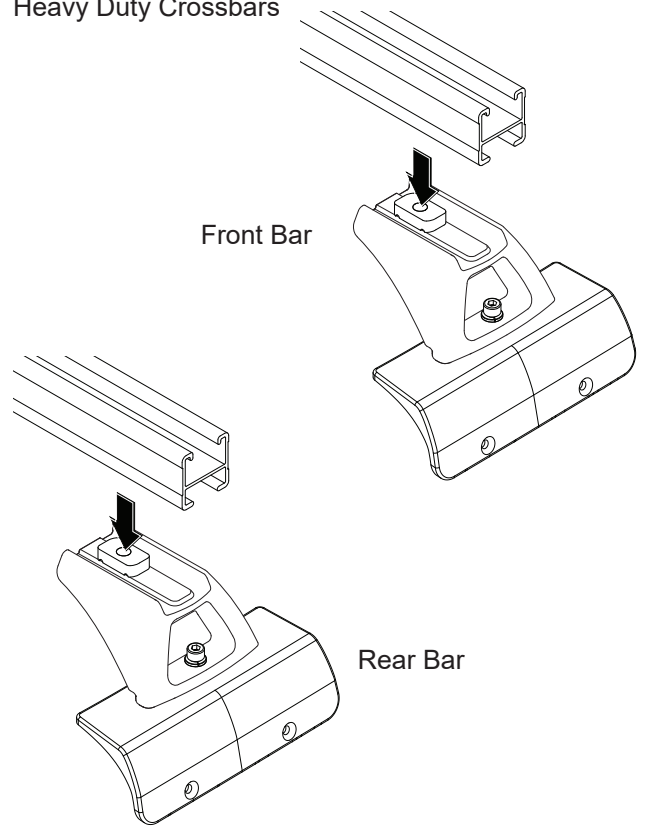


Jeep JK 2dr Backbone - RJKB2

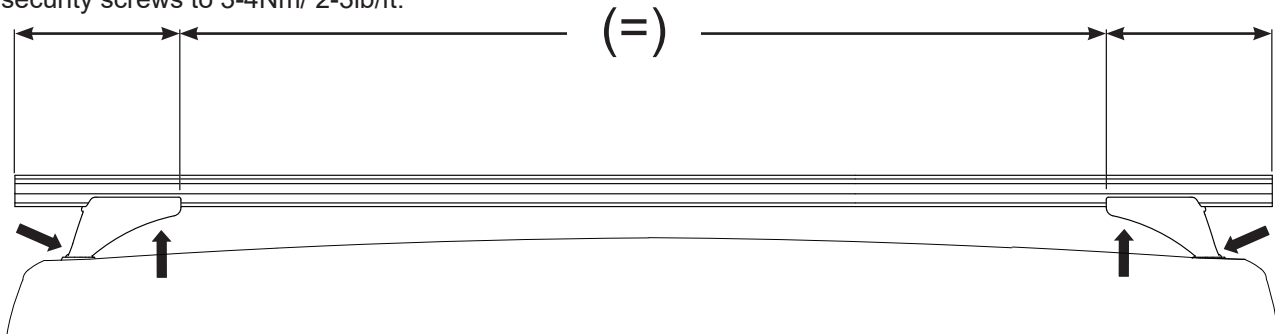
16 Attach Vortex Crossbars



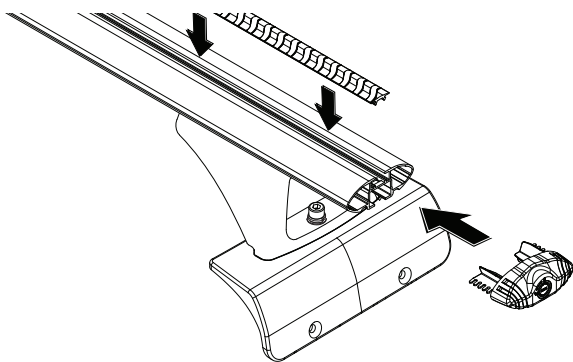
Heavy Duty Crossbars



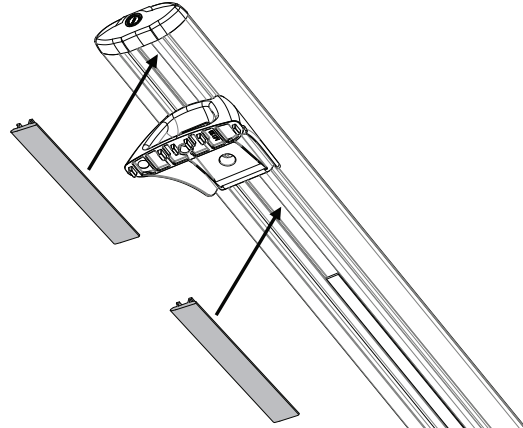
17 Adjust crossbar overhang to be equal on both sides. Tighten M6 crossbar bolts to 3-4Nm/ 2-3lb/ft. Tighten M6 security screws to 3-4Nm/ 2-3lb/ft.



18 Insert vortex rubber and end caps into all crossbars.



19 Measure the under bar slot length each side of the leg. Cut under bar strips to fill the gaps.



Note: RE-CHECK ALL FASTENERS ARE SECURE.