



**SUPERLIFT**<sup>®</sup>  
S U S P E N S I O N

# SUPERLIFT 2009 - 2014 FORD F150 4.5" and 6" INSTALLATION INSTRUCTIONS





# **SUPERLIFT®**

S U S P E N S I O N

## **SUPERLIFT 2009 - 2014 FORD F150 4.5" and 6" INSTALLATION INSTRUCTIONS**

**THANK YOU FOR CHOOSING SUPERLIFT FOR ALL YOUR SUSPENSION NEEDS!!**

### **INTRODUCTION**

Installation requires a professional mechanic.

Prior to beginning, inspect the vehicles steering, driveline, and brake systems, paying close attention to the suspension link arms and bushings, sway bars and bushings, tie rod ends, pitman arm, ball joints and wheel bearings. Also check the steering sector-to-frame and all suspension-to-frame attaching points for stress cracks. The overall vehicle must be in excellent working condition; repair or replace all worn parts.

**Read instructions several times before starting. Be sure you have all needed parts and know where they install. Read each step completely as you go.**

### **NOTES:**

- Prior to beginning the installation, check all parts and hardware in the box with the parts list below. If you find a packaging error, contact Superlift® directly. Do not contact the dealer where the system was originally purchased. You will need the control number from each box when calling; this number is located at the bottom of the part number label and to the right of the bar code.
- If being installed on a 2009 Model; you **MUST** order a 77-15-9922 separately!!
- Vehicles equipped with a two piece rear driveshaft will need to order an additional kit box 9935 for the carrier bearing shims.
- Front end alignment is necessary.
- A foot-pound torque reading is given in parenthesis ( ) after each appropriate fastener.
- Tool and Wrench/Socket size is given in brackets { } after each appropriate step.
- Prior to attaching components, be sure all mating surfaces are free of grit, grease, excessive undercoating, etc.
- A factory service manual should be on hand for reference.
- Use the check-off box "☐" found at each step to help you keep your place. Two "☐☐" denotes that one check-off box is for the driver side and one is for the passenger side. Unless otherwise noted, always start with the driver side.

9922 (4.5" F150 KIT) TIRE / WHEEL RECCOMENDATIONS									
Wheel					Maximum Recommended Tire Size				
	Diameter	Width	Backspace	Offset (mm)	Diameter	Section Width	*Printed Size*	Manufacturer	Series
OEM	18	7.5	5.5	44	32.5	11.2	275/65R18	GOODYEAR	WRANGLER
	18	7.5	5.5	44	35.0	12.0			
	18	9	5.3	19	35.0	12.5			
	18	9	5.0	13	34.0	1.0			
	18	9	4.5	0	33.0	2.0			
OEM	20	8.5	6.0	44	31.9	11.2	275/55R20	MICHELIN	LTX
	20	8.5	6.0	44	35.0	11.3			
	20	9	5.5	25	35.0	12.3			
	20	9	5.0	13	34.0	13.3			
	20	9	4.5	0	33.0	14.3			

*\*Note: The printed size is just for reference. Final tire selection should be based on the diameter and section width of the tires as published by the tire manufacturer.\**

*\*\*Denotes wheel and tire combination used during development.*

9922 (6" F150 KIT) TIRE / WHEEL RECCOMENDATIONS									
Wheel					Maximum Recommended Tire Size				
	Diameter	Width	Backspace	Offset (mm)	Diameter	Section Width	*Printed Size*	Manufacturer	Series
OEM	18	7.5	5.5	44	32.5	11.2	275/65R18	GOODYEAR	WRANGLER
	18	7.5	5.5	44	36.0	12.0			
	18	9	5.3	19	36.0	13.0			
	18	9	5.0	13	36.0	13.5			
	18	9	4.5	0	36.0	14.5			
OEM	20	8.5	6.0	44	31.9	11.2	275/55R20	MICHELIN	LTX
	20	8.5	6.0	44	36.0	11.3			
	20	9	5.5	25	36.0	12.3			
	20	9	5.0	13	36.0	13.3			
	20	9	4.5	0	35.0	14.3			
**	20	9	4.5	0	35.5	12.5	LT295/65R20	NITTO	TRAIL GRAPPLER
**	20	10	4.3	-19	35.0	12.8	35x12.50R20	NITTO	TRAIL GRAPPLER

*\*Note: The printed size is just for reference. Final tire selection should be based on the diameter and section width of the tires as published by the tire manufacturer.\**

*\*\*Denotes wheel and tire combination used during development.*

Misc. Tools	Wrench / Socket Sizes	
	Standard	Metric
floor jack		
jack stands	3/8"	8mm
flathead screwdriver	7/16"	10mm
hammer	1/2"	13mm
plastic fastener removal tool	9/16"	15mm
die grinder w/cut-off wheel	5/8"	18mm
torque wrench	3/4"	19mm
drill	13/16"	21mm
drill bits - 7/32", 9/32", & 11/32"	7/8"	27mm
		8mm allen
		5mm allen

<b>Kit Part Number</b> K104 <b>4.5" Lift Kit</b>			<b>Kit Part Number</b> K104B <b>4.5" Lift Kit</b>		
<b>Part Number</b>	<b>Qty.</b>	<b>Part Description</b>	<b>Part Number</b>	<b>Qty.</b>	<b>Part Description</b>
9922	1	knuckle kit box	9922	1	knuckle kit box
9923	1	crossmember kit box	9923	1	crossmember kit box
9932	1	differential brackets and shock kit box	9932B	1	differential brackets and shock kit box
9925	1	strut spacer kit box	9925	1	strut spacer kit box
<b>OR</b>			<b>OR</b>		
<b>Kit Part Number</b> K105 <b>6" Lift Kit</b>			<b>Kit Part Number</b> K105B <b>6" Lift Kit</b>		
<b>Part Number</b>	<b>Qty.</b>	<b>Part Description</b>	<b>Part Number</b>	<b>Qty.</b>	<b>Part Description</b>
9922	1	knuckle kit box	9922	1	knuckle kit box
9923	1	crossmember kit box	9923	1	crossmember kit box
9932	1	differential brackets and shock kit box	9932B	1	differential brackets and shock kit box
9924	1	strut spacer kit box	9924	1	strut spacer kit box

<b>Kit Part Number</b> 9922			<b>Kit Part Number</b> 77-9930		
<b>Part Number</b>	<b>Qty.</b>	<b>Part Description</b>	<b>Part Number</b>	<b>Qty.</b>	<b>Part Description</b>
66-01-9922	1	knuckle, driver	01-60418	4	01-60418, hourglass bushing
66-02-9922	1	knuckle, passenger	21-3205	1	5/16" x 3-1/2" vacuum hose
<b>Kit Part Number</b> 9923			23-3205	1	5/16" hose adapter
			24-5704	4	24-5704, 0.75" OD x 0.50" ID x 1.54" L, sleeve
<b>Part Number</b>	<b>Qty.</b>	<b>Part Description</b>	55-16-9910	1	brake line bracket, rear
55-05-9922	1	crossmember, front	55-18-9910	1	brake line bracket, front passenger
55-06-9922	1	crossmember, rear	55-19-9910	1	brake line bracket, front driver
55-07-9922	1	sway bar drop, driver	<b>Kit Part Number</b> 77-9922		
55-08-9922	1	sway bar drop, passenger			
55-10-9922	1	belly pan	<b>Part Number</b>	<b>Qty.</b>	<b>Part Description</b>
77-9922	1	hardware bag, knuckle spacers, e-brake	55-12-9922	1	emergency brake bracket
77-9923	1	hardware bag, cam bolts	12X114C5CS	1	1/2" x 1-1/4" bolt, coarse thread
<b>Kit Part Number</b> 9932			12SW	1	1/2" sae washer
			12CSNN	1	1/2" nyloc nut
<b>Part Number</b>	<b>Qty.</b>	<b>Part Description</b>	516X1C5CS	1	5/16" x 1" bolt, coarse thread
01-85150	2	shock cylinder, Superide rear	516SW	2	5/16" sae washer
55-03-9930	1	differential drop, driver	516C5NN	1	5/16" nyloc nut
55-04-9930	1	differential drop, passenger	<b>Kit Part Number</b> 77-9923		
55-12-9930	2	bump stop, rear			
55-30-9930	2	block, rear	<b>Part Number</b>	<b>Qty.</b>	<b>Part Description</b>
66-11-9910	1	driveshaft spacer, front	55-20-9922	2	cam bolt, front (short)
77-9930	1	hardware bag, SL parts	55-20-9930	2	cam bolt, rear (long)
77-9932	1	hardware bag, nuts and bolts	<b>Kit Part Number</b> 77-9932		
<b>Kit Part Number</b> 9932B					
<b>Part Number</b>	<b>Qty.</b>	<b>Part Description</b>	<b>Part Number</b>	<b>Qty.</b>	<b>Part Description</b>
55-03-9930	1	differential drop, driver	10MFN	6	10mm flange nut
55-04-9930	1	differential drop, passenger	10MFW	2	10mm flat washer
55-12-9930	2	bump stop, rear	10MX1.5X150CS	2	10mm x 1.5 x 150mm bolt
55-30-9930	2	block, rear	10MX1.5X90SHB	6	10mm x 1.5 x 90mm bolt, socket head
66-11-9910	1	driveshaft spacer, front	14X12STB	2	1/4" x 1/2" bolt, self-tapping
77-9930	1	hardware bag, SL parts	18MFW	8	18mm flat washer
77-9932	1	hardware bag, nuts and bolts	18MLN	6	18mm stover nut
BE5-6249-H5	2	shock cylinder, Bilstein rear	18MX2.5X150CS	2	18mm x 2.5 x 150mm bolt
<b>Kit Part Number</b> 9924 <b>6" Lift Kit</b>			38C5FN	4	3/8" flange nut
			38X1C5CB	4	3/8" x 1" carriage bolt, coarse thread
<b>Part Number</b>	<b>Qty.</b>	<b>Part Description</b>	516C5NN	2	5/16" nyloc nut
10362	4	9/16" x 3-5/16" x 12" ubolts	516C8SN	1	5/16" stover nut
55-09-9930	1	strut spacers (6"), driver	516SW	3	5/16" sae washer
55-13-9922	1	strut spacers (6"), passenger	516X1C5CS	1	5/16" x 1" bolt, coarse thread
77-1509	1	ubolt nuts and washers	516X1STB	1	5/16" x 1" bolt, self tapping
<b>Kit Part Number</b> 9925 <b>4.5" Lift Kit</b>			516X34C5CS	2	5/16" x 3/4" bolt, coarse thread
			716C8SN	4	7/16" stover nut
<b>Part Number</b>	<b>Qty.</b>	<b>Part Description</b>	716SW	4	7/16" sae washer
10352	4	9/16" x 3-5/16" x 11" ubolts	716X1C5CS	4	7/16" x 1" bolt, coarse thread
55-11-9930	1	strut spacers (4.5"), driver	916C8SN	3	9/16" stover nut
55-14-9922	1	strut spacers (4.5"), passenger	916SW	3	9/16" sae washer
77-1509	1	ubolt nuts and washers	916X334C5CS	3	9/16" x 3-3/4" bolt, coarse thread
<b>Kit Part Number</b> 77-15-9922			F470L	2	F470L, thread locker
			<b>Part Number</b>	<b>Qty.</b>	<b>Part Description</b>
15-9922	4	brake caliper sleeve			

Step	Part Number	Qty. per Kit	Description	New Attaching Hardware	Qty. per Bracket	Hardware Bag Number
21	55-03-9930	1	differential drop, driver	9/16" x 3-3/4" bolt, coarse thread	1	77-9932
				9/16" sae washer	1	
				9/16" stover nut	1	
21	55-04-9930	1	differential drop, passenger	9/16" x 3-3/4" bolt, coarse thread	1	77-9932
				9/16" sae washer	1	
				9/16" stover nut	1	
21	21-3205	1	5/16" x 3-1/2" vacuum hose			77-9930
21	23-3205	1	5/16" hose adapter			
22	55-07-9922	1	sway bar drop, driver	7/16" x 1" bolt, coarse thread	2	77-9932
				7/16" sae washer	2	
				7/16" stover nut	2	
22	55-08-9922	1	sway bar drop, passenger	7/16" x 1" bolt, coarse thread	2	77-9932
				7/16" sae washer	2	
				7/16" stover nut	2	
23	55-06-9922	1	crossmember, rear	9/16" x 3-3/4" bolt, coarse thread	1	77-9932
				9/16" sae washer	1	
				9/16" stover nut	1	
				18mm stover nut	4	
				18mm flat washer	6	
				18mm x 2.5 x 150mm, bolt	2	
				55-20-9930, cam bolt (long)	2	
25	55-05-9922	1	crossmember, front	55-20-9922, cam bolt (short)	2	77-9923
				18mm stover nut	2	77-9932
				18mm flat washer	2	
28	55-10-9922	1	belly pan	3/8" x 1" carriage bolt, coarse thread	4	77-9932
				3/8" flange nut	4	
29	66-11-9910	1	driveshaft spacer, front	10mm x 1.5 x 90mm bolt, socket head	6	77-9932
				F470L, thread locker	1	
31	55-09-9930	1	strut spacer (6"), driver	10mm flange nut	3	77-9932
31	55-13-9922	1	strut spacer (6"), passenger	10mm flange nut	3	
			OR			
31	55-11-9930	1	strut spacer (4.5"), driver	10mm flange nut	3	
31	55-14-9922	1	strut spacer (4.5"), passenger	10mm flange nut	3	
33	66-01-9922	1	knuckle, driver	F470L, thread locker	0.5	77-9932
				15-9922 - brake caliper sleeve (2009 Models ONLY)	2	77-9922
33	66-02-9922	1	knuckle, passenger	F470L, thread locker	0.5	77-9932
				15-9922 - brake caliper sleeve (2009 Models ONLY)	2	77-9922
41	55-19-9910	1	brake line bracket, front driver	5/16" x 3/4" bolt, coarse thread	1	77-9932
				5/16" nyloc nut	1	
				5/16" sae washer	1	
				1/4" x 1/2" bolt, self-tapping	1	
41	55-18-9910	1	brake line bracket, front passenger	5/16" x 3/4" bolt, coarse thread	1	77-9932
				5/16" nyloc nut	1	
				5/16" sae washer	1	
				1/4" x 1/2" bolt, self-tapping	1	
50	55-12-9922	1	emergency brake line bracket	1/2" x 1-1/4" bolt, coarse thread	1	77-9922
				1/2" sae washer	1	
				1/2" nyloc nut	1	
				5/16" x 1" bolt, coarse thread	1	
				5/16" sae washer	2	
				5/16" nyloc nut	1	
56	55-30-9930	2	block, rear (6")	9/16" x 3-5/16" x 12" ubolt, square	4	77-1509
				9/16" high nut, fine thread	8	
				9/16" ubolt washer	8	
				OR		
56	55-30-9930	2	block, rear (4.5")	9/16" x 3-5/16" x 11" ubolt, square	4	77-1509
				9/16" high nut, fine thread	8	
				9/16" ubolt washer	8	
57	55-16-9910	1	brake line bracket, rear	5/16" x 1" bolt, coarse thread	1	77-9932
				5/16" stover nut	1	
				5/16" sae washer	1	
				5/16" x 1" bolt, self tapping	1	
59	01-85150	2	shock cylinder, Superide rear	01-60418, hourglass bushing	2	77-9930
				24-5704, 0.75" OD x 0.50" ID x 1.54" L, sleeve	2	
				OR		
59	BE5-6249-H5	2	shock cylinder, Bilstein rear	01-60418, hourglass bushing	2	
				24-5704, 0.75" OD x 0.50" ID x 1.54" L, sleeve	2	
60	55-12-9930	2	bump stop, rear	10mm x 1.5 x 150mm, socket bolt	1	77-9932
				10mm flat washer	1	

## **FRONT DISASSEMBLY**

**NOTE:** Save all factory components and hardware for reuse, unless noted.

### **1) PREPARE VEHICLE...**

Chock rear tires and place transmission in neutral. Raise front of vehicle with a jack and secure a jack stand beneath each frame rail. Ease the frame down onto the stands and place transmission in park. Remove front tires. {Lug Nuts 21mm}

### **2) FRONT DIFFERENTIAL SKID PLATE...**

[Illustration 1] If equipped, remove the factory front differential skid plate and discard. {13mm} (Some models are equipped with a secondary skid plate located behind the front differential skid plate. Remove this skid plate as well as the brackets bolted to the side of the frame and discard.)

**Illustration 1**

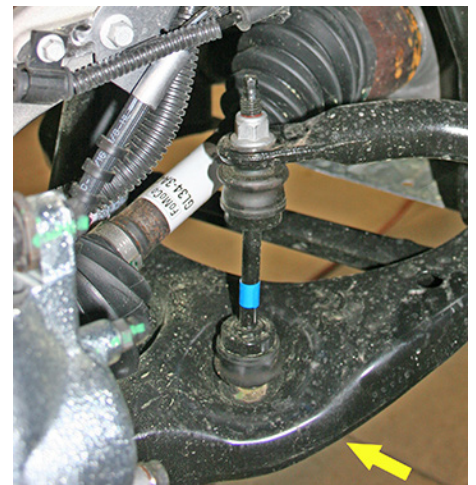


### **3) SWAY BAR LINKS AND SWAY BAR BODY...**

[Illustration 2] Disconnect the lower end of the sway bar links from the lower control arm. {18mm}

[Illustration 3] Remove four nuts retaining the sway bar body, then remove the sway bar from the vehicle. {15mm} Remove the stud plates from each side and retain for later use.

**Illustration 2**



**Perform steps 4 through 15 one side at a time.**

### **4) STEERING TIE ROD END...**

[Illustration 4] Remove the nut from the tie rod end and using the appropriate puller tool remove tie rod from knuckle. If you do not have a puller tool you can use a hammer by very carefully striking the tie rod boss of the knuckle; do not strike the tie rod end. {21mm}

**Illustration 3**

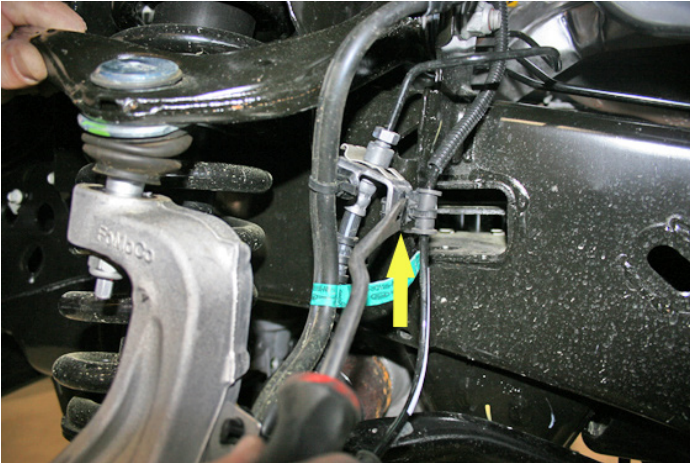
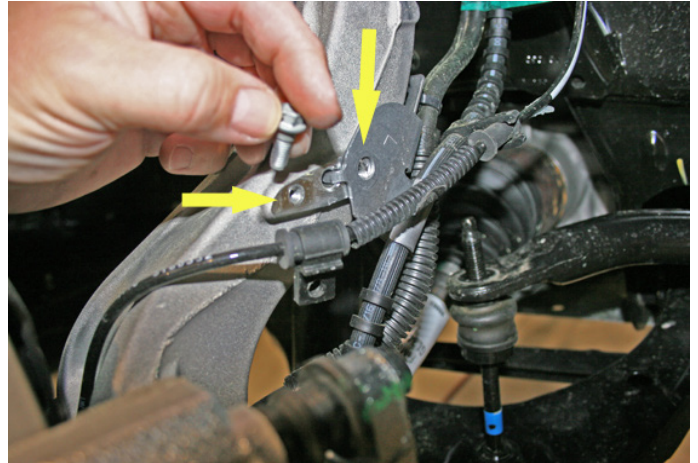


**Illustration 4**

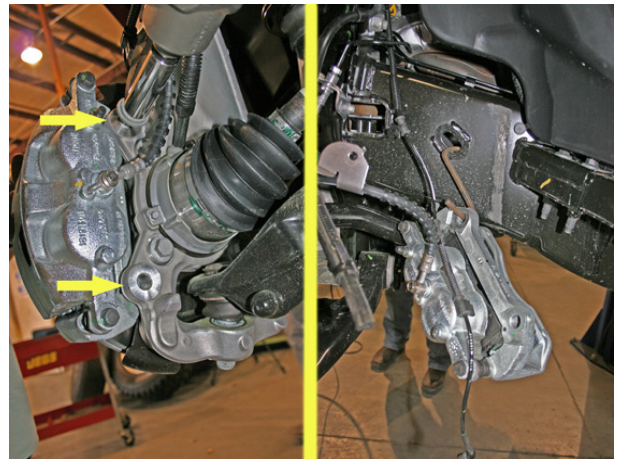


**5) BRAKE LINE BRACKET AND ABS SENSOR WIRE...**

- [Illustration 5] Unclip the vacuum lines from the brake line bracket. {plastic fastener removal tool}
- [Illustration 6] Locate the brake line bracket on the steering knuckle and remove. {10mm}
- [Illustration 6] Remove the ABS sensor wire from the steering knuckle. {8mm}

**Illustration 5****Illustration 6****6) BRAKE CALIPER...**

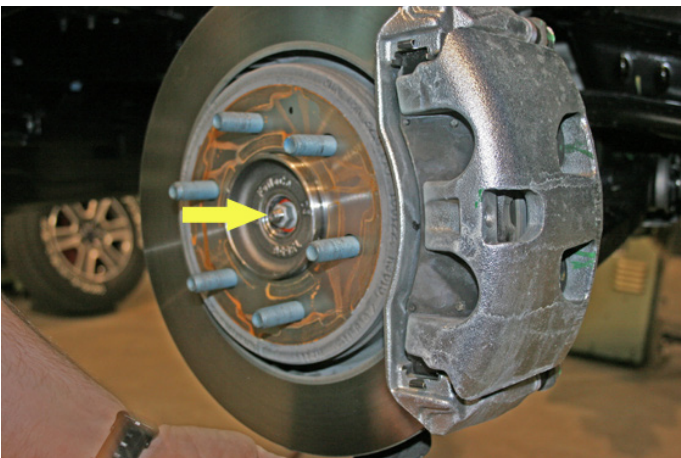
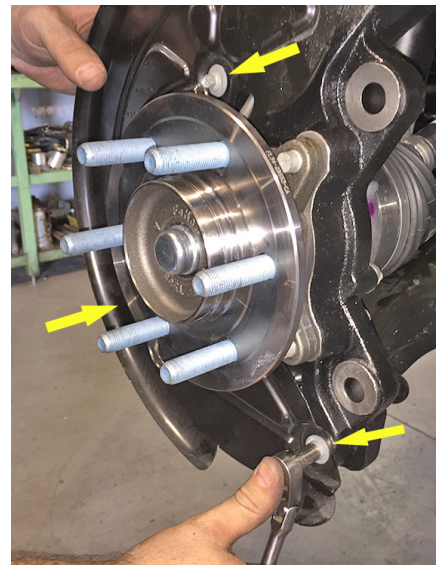
- [Illustration 7] Unbolt the brake caliper and remove from the rotor and secure it away from the work area.  
NOTE: Do not let calipers hang from brake lines. {21mm}
- Remove the front rotor from the hub.

**Illustration 7****7) CV SHAFT NUT...**

- [Illustration 8] Remove the CV shaft dust cap from the outside of the hub assembly. Remove the retaining nut from the CV shaft. {flathead screwdriver, hammer, 13mm}

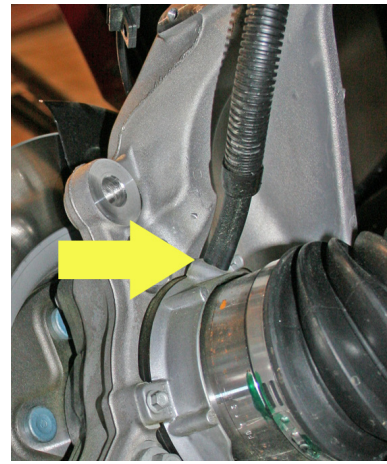
**8) DUST SHIELD...**

- [Illustration 9] Remove the three bolts holding the dust shield on the knuckle. {8mm}

**Illustration 8****Illustration 9**

**9) ABS SENSOR AND VACUUM LINES...**

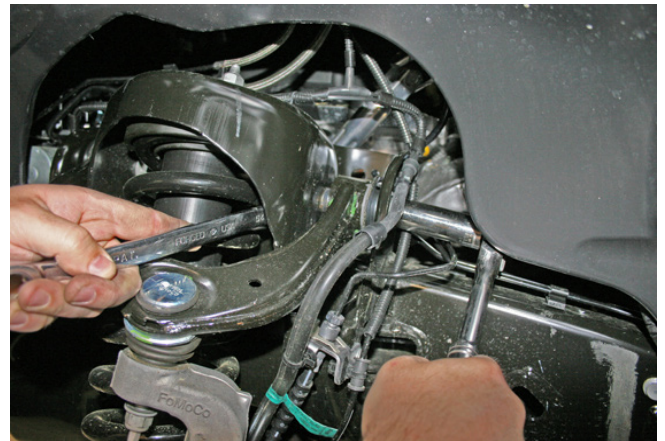
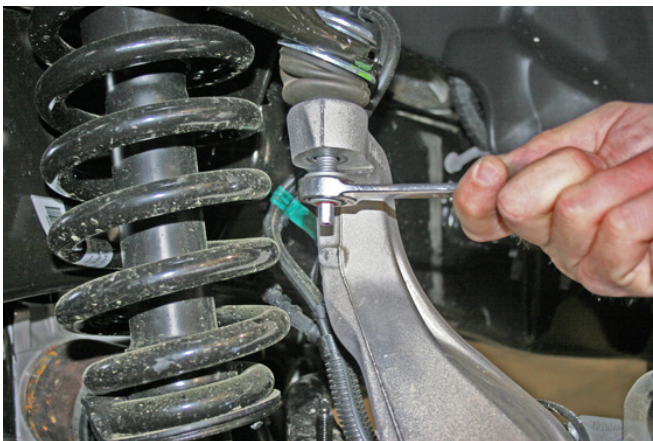
□□ [Illustrations ] Remove the ABS sensors from the top of the hub assembly, and vacuum lines from the vacuum module. {5mm allen, plastic fastener removal tool}

**Illustration 10****Illustration 11****10) UPPER CONTROL ARM...**

□□ [Illustration 12] Loosen, but do not remove, the four upper control arm bolts (2 per side). {21mm}

**11) KNUCKLE...**

□□ [Illustrations 13 &14] Remove the nuts from the upper and lower ball joints then using the appropriate puller tool, disconnect the ball joints from the knuckle. If you do not have a puller tool you can use a hammer by very carefully striking the ball joint boss' of the knuckle; do not strike the ball joints. Remove knuckle from vehicle. {upper ball joint 21mm, lower ball joint 24mm}

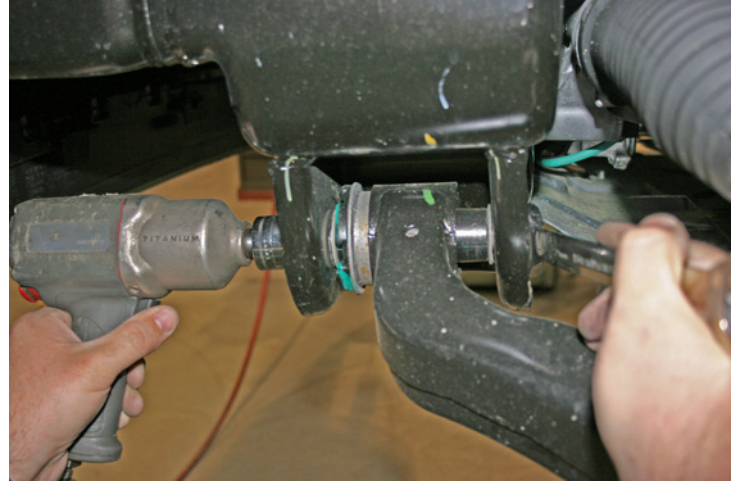
**Illustration 12****Illustration 13****Illustration 14****12) BRAKE LINE BRACKET...**

□□ [Illustration 15] Locate the brake line bracket on the side of the upper control arm mount and remove. {10mm}



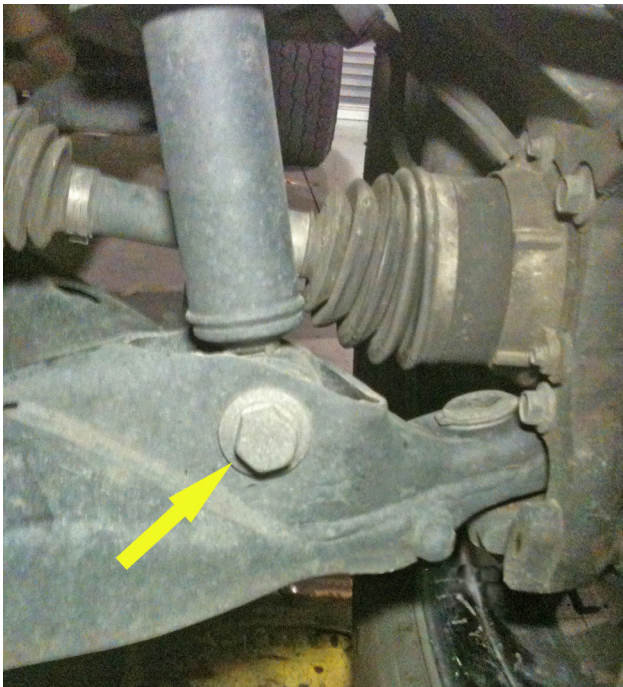
**13) LOWER CONTROL ARM...**

[Illustration 16] Loosen but do not remove the four lower control arm bolts (2 per side). {bolt 21mm, nut 27mm}

**Illustration 15****Illustration 16****14) STRUT...**

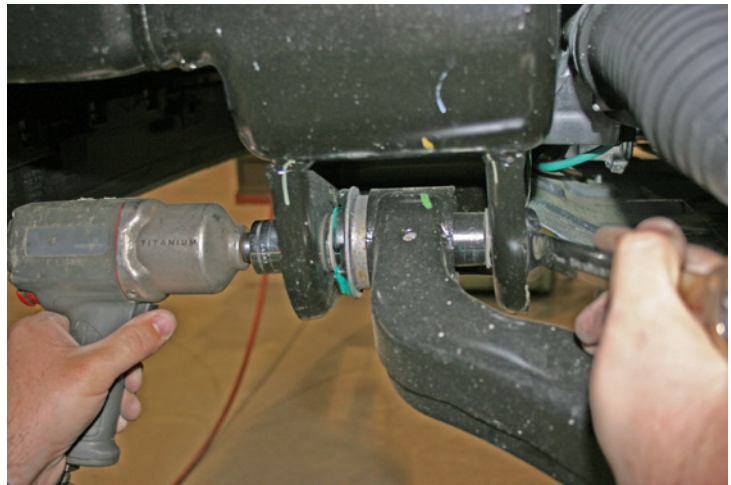
[Illustration 17] Remove the bolt from the lower strut studs and let the lower control arm swing out of the way. {bolt 27mm, nut 30mm}

[Illustration 18 & 19] Remove the three nuts from the top of the strut and remove the strut from the vehicle. {15mm}

**Illustration 17****Illustration 18****15) LOWER CONTROL ARM...**

[Illustration 20] Remove the lower control arm's bolts then remove the lower control arm.

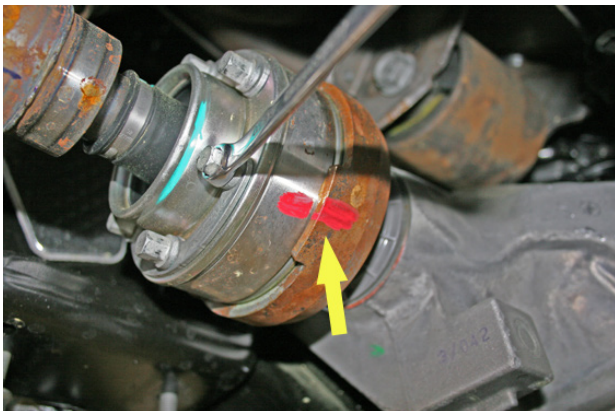
**Repeat steps 4 through 15 on the remaining side.**

**Illustration 19****Illustration 20****16) DRIVESHAFT...**

[Illustration 21] Mark the orientation of the front driveshaft, then disconnect from the differential; secure the driveshaft up and out of the way, do not let it hang. Discard the bolts and washer plates. {10mm}

**17) REAR CROSSMEMBER...**

[Illustration 21] Remove the four bolts securing the rear crossmember and remove the rear crossmember. {bolt 15mm, nut 18mm}

**Illustration 21****Illustration 22****18) DIFFERENTIAL REMOVAL...**

Disconnect vacuum line from differential located on the top of the center section towards the middle of the vehicle.

[Illustrations 23 thru 25] Support the differential with a jack and remove the rear driver's side differential bolt, then remove the two front bolts. {driver's side rear bolt 21mm, driver's side front bolt 18mm, passenger's side bolt 18mm}

Carefully remove differential assembly.

Illustration 23



Illustration 24



Illustration 25



### 19) TRIMMING LOWER CONTROL ARM MOUNT...

□ [Illustrations 26 thru 31] The factory driver's side rear lower control arm mount must be trimmed as shown. Start on the rear side and measure from inside of the bracket out 5-1/2" and mark. Using a square mark a line up and over the bracket maintaining the 5-1/2" distance from the inside edge. Cut the bracket along the marked lines using a cut-off wheel or Sawz-All.

□□ After cutting, clean and paint all exposed areas.

Illustration 26

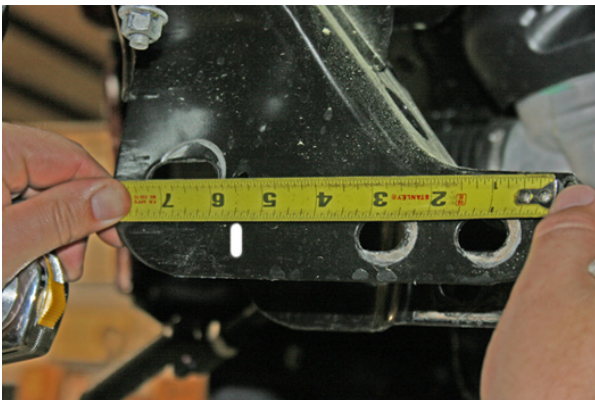


Illustration 27

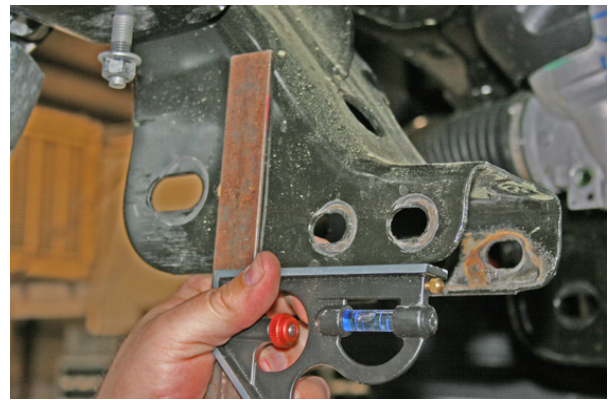


Illustration 28

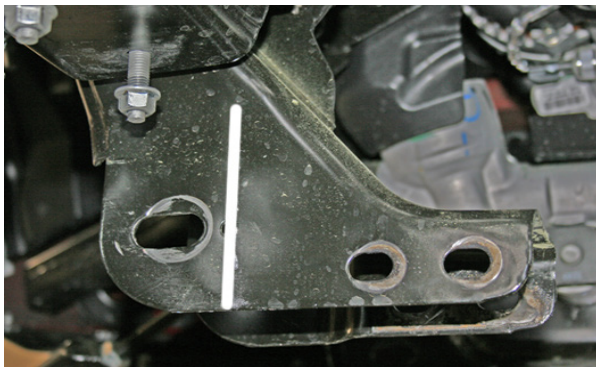


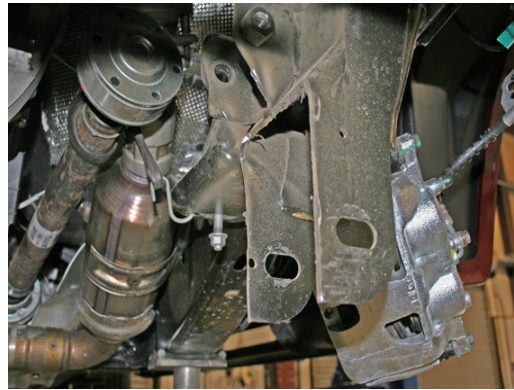
Illustration 29



Illustration 30



Illustration 31



## 20) TRIMMING SWAY BAR MOUNT...

□□ [Illustrations 32 thru 34] The driver's side sway bar mount must be trimmed as shown. Only the inside front corner needs to be trimmed. Start on the bottom side and measure from front to rear 1-3/4" and mark; then measure from the inside to the outside 1-3/4" and mark. Move to the front side and measure from the bottom up 2" and mark; then measure from the inside to the outside 1-3/4" and mark.

□□ Cut the bracket along the marked lines using a cut-off wheel or Sawz-All.

□□ After cutting, clean and paint all exposed areas.

Illustration 32



Illustration 33



Illustration 34



## FRONT ASSEMBLY

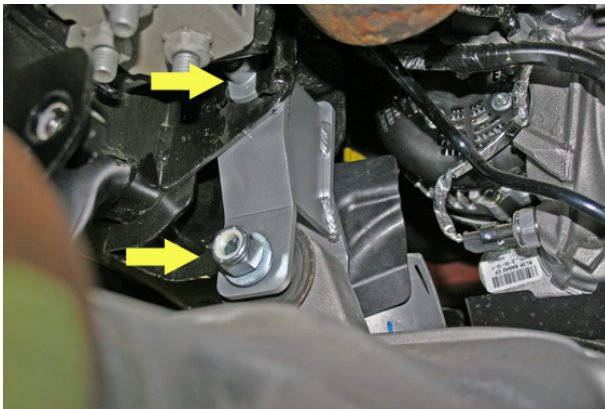
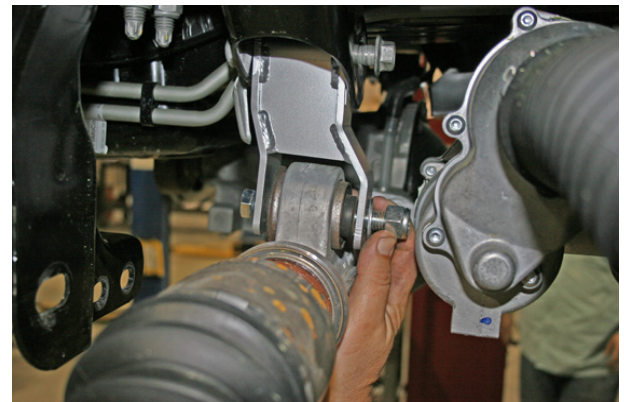
### 21) DIFFERENTIAL INSTALLATION...

□ [Illustration 35] Loosely attach the driver side front differential drop bracket (55-03-9930) to the differential using the supplied 9/16" x 3-3/4" hardware; install bolt from front. Do not tighten. **NOTE:** The offset will face the front of the vehicle. The 55-03-9930 bracket does not have notches in the top.

□ [Illustration 36] Loosely attach the passenger side differential drop bracket (55-04-9930) to the frame using the factory hardware; install bolt from front. Do not tighten. **NOTE:** The offset will face the front of the vehicle. The 55-04-9930 bracket has notches in the top.

**Illustration 35****Illustration 36**

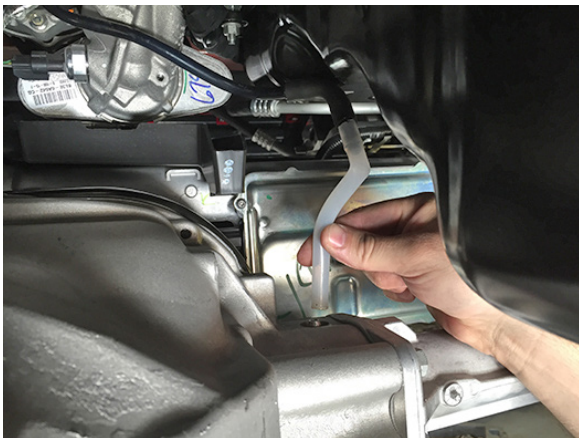
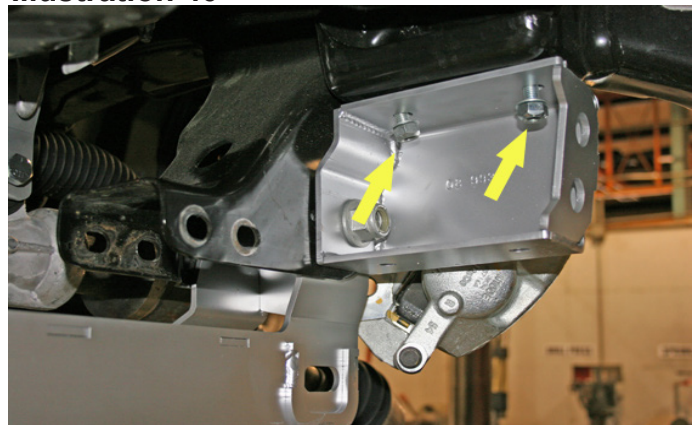
□□ [Illustrations 37 & 38] Position the front driver differential bracket into the frame using the factory hardware; install bolt from front, then pivot the differential into the passenger side differential bracket and secure using the supplied 9/16" x 3-3/4" bolts, washer, and nut; install bolt from rear. Do not tighten.

**Illustration 37****Illustration 38**

□ [Illustration 39] Attach the hose adapter to the new vacuum hose, then attach the hose adapter to the factory hose. Connect the new hose to the differential.

## 22) SWAY BAR BRACKETS...

□□ [Illustration 40] Position the sway bar brackets (55-07-9930 driver; 55-08-9930 passenger) on the frame using the supplied 7/16" x 1" bolts, washers, and nuts. Do not tighten.

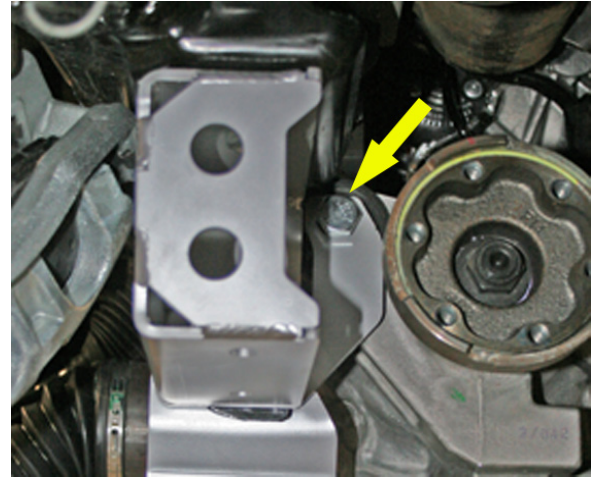
**Illustration 39****Illustration 40**

**23) REAR CROSSMEMBER...**

[Illustration 41] Raise the rear crossmember (55-06-9930) into position. Secure it to the frame using the supplied 18mm x 150mm bolts, washers, and nuts; install bolts from rear.

**24) DIFFERENTIAL REAR MOUNT...**

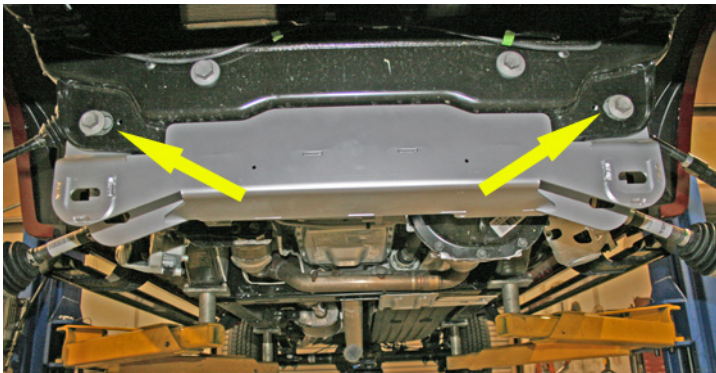
[Illustration 42] Install the supplied 9/16" x 3-3/4" bolt, washer, and nut from the rear, through the sway bar bracket, differential rear mount and the rear crossmember. Do not tighten.

**Illustration 41****Illustration 42****25) FRONT CROSSMEMBER...**

[Illustration 43] Position the front crossmember (55-05-9930) into the frame using the factory hardware; install bolts from front. Do not tighten.

**26) LOWER CONTROL ARMS...**

[Illustration 44] Install the lower control arms into the new crossmembers with the supplied alignment cam bolts and nuts. Make sure the cam washers fit between the control tabs on the crossmembers. The cam washer should be in the up or neutral position. Snug but do not tighten. {27mm}

**Illustration 43****Illustration 44****27) TIGHTEN THESE FASTENERS...**

Tighten these bolts in this order. Refer back to the illustrations listed if needed.

- [Illustration 40] Snug sway bar drop brackets to frame; do not tighten. {bolt 5/8", nut 11/16"}
- [Illustration 41] Rear crossmember mounting bolts to frame. (280) {27mm}
- [Illustration 42] Differential rear mounting bolt to rear crossmember. (105) {bolt 13/16", nut 7/8"}

- [Illustration 36 & 37] Front differential brackets to frame. (130) {18mm}
- [Illustration 37 & 38] Front differential brackets to differential. (105) {bolt 13/16", nut 7/8"}
- [Illustration 40] Sway bar brackets to frame. (50) {bolt 5/8", nut 11/16"}
- [Illustration 43] Front crossmember to frame (280) {bolt 21mm, nut 27mm}

## 28) BELLY PAN...

- [Illustration 45] Install the belly pan (55-10-9930) to the front and rear crossmembers using the supplied 3/8" x 1" bolts and nuts. Tighten (23) {9/16"}

## 29) FRONT DRIVESHAFT...

- [Illustration 46] Install the front driveshaft spacer (66-11-9910). Apply thread locker to the supplied 10mm x 90mm socket head bolts and install making sure that the orientation marks that were made previously are aligned. Tighten (63) {8mm allen}

## 30) SWAY BAR...

- [Illustration 47] Attach the sway bar body to the new drop brackets using the factory hardware. Tighten (55) {15mm}

Perform steps 31 through 42 one side at a time.

Illustration 45



Illustration 46

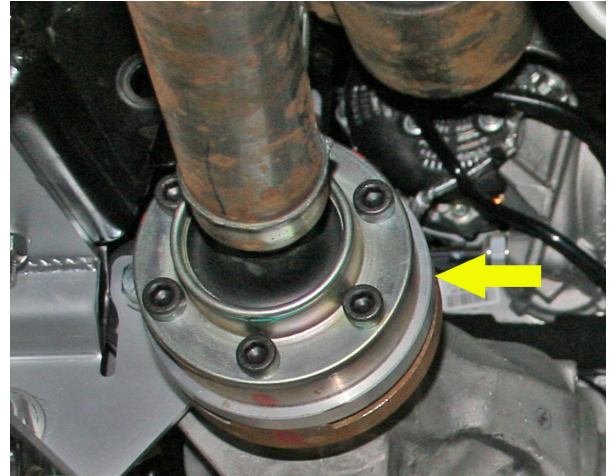


Illustration 47



**31) STRUT SPACERS...**

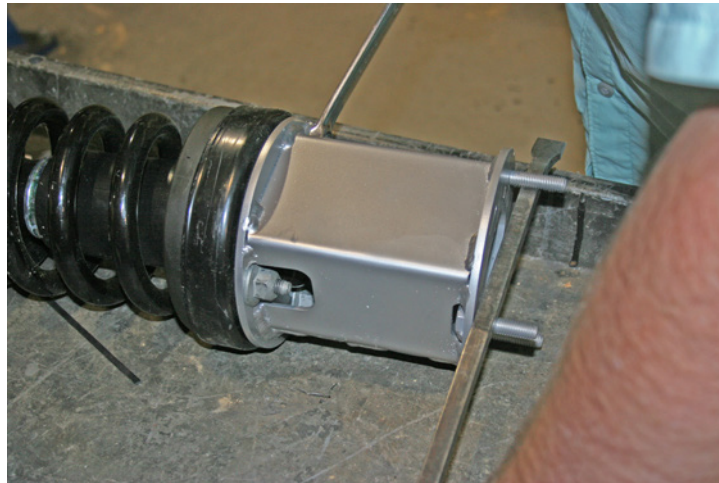
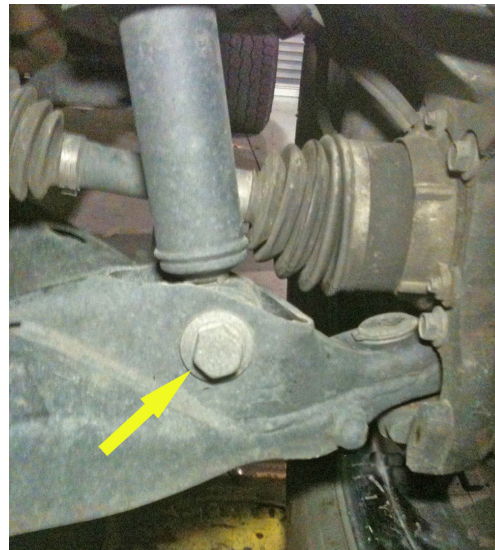
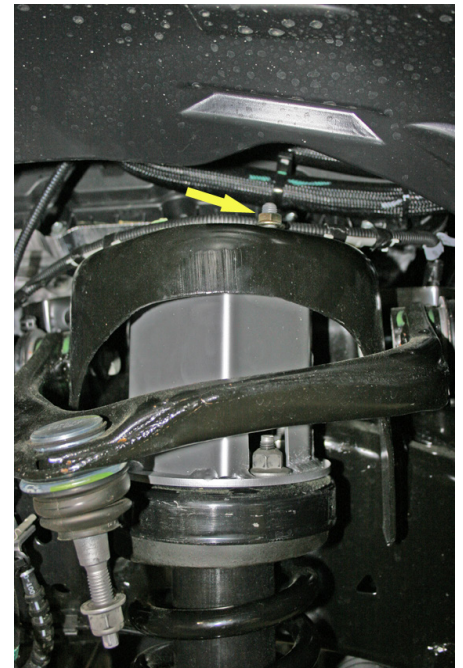
□□ [Illustration 48] Position the strut spacers (4.5" lift = 55-11-9930 driver's side and 55-14-9922 passenger's side or 6" lift = 55-09-9930 driver's side and 55-13-9930 passenger's side) to the top of the factory strut and fasten using the factory hardware. Tighten (55) {18mm}

**32) STRUTS...**

□□ [Illustration 48] Install the strut assembly into the strut mount and attach using the supplied 10mm flange nut, start nut but do not tighten.

□□ [Illustration 49] Re-attach the lower strut mount to the lower control arm using the factory hardware. Do not tighten.

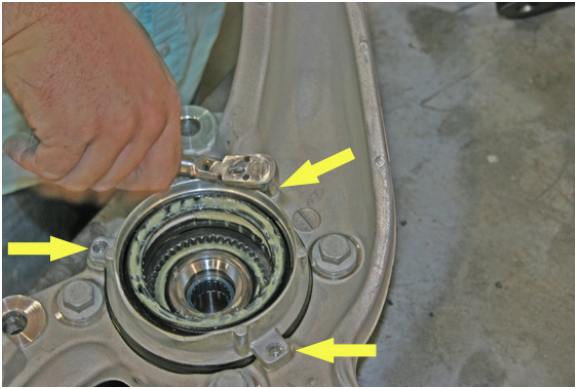
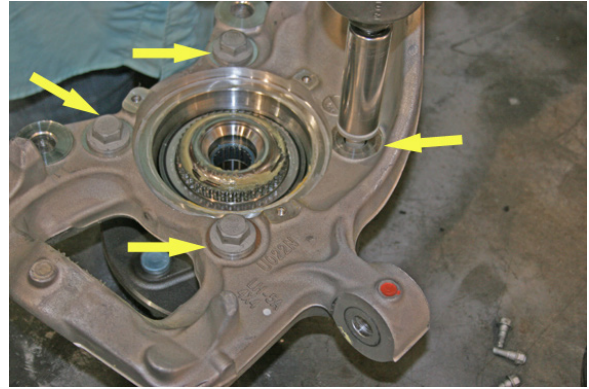
□□ [Illustration 50] Tighten the three top strut spacer 10mm flange nuts. (55) {15mm}

**Illustration 48****Illustration 49****Illustration 50****Illustration 51**

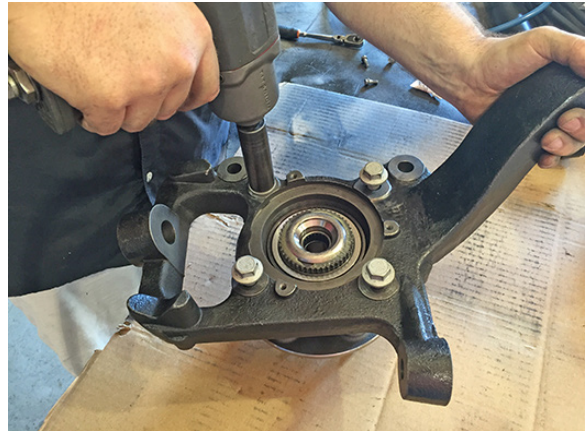


**33) HUB ASSEMBLY...**

□□ [Illustration 52 & 53] On the factory knuckle, note the orientation of the vacuum module, and hub assembly, then remove them from the factory knuckle.

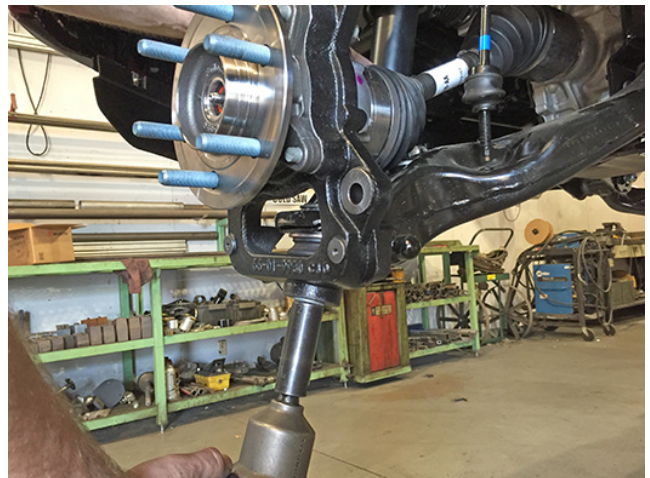
**Illustration 52****Illustration 53**

□□ [Illustration 54] Install the new knuckle (66-01-9922 driver's side and 66-02-9922 passenger's side) onto the hub bearing assembly. Apply thread locker to the factory hardware and install bolts; tighten. (151) {18mm}

**Illustration 54****34) VACUUM ASSEMBLY AND KNUCKLE INSTALL...**

□□ [Illustration 55] Carefully position the vacuum assembly on the CV shaft.

□□ [Illustration 56] Position the new knuckles on the lower control arm ball joint while sliding the CV shaft into the new knuckle. Install the factory nut onto the lower control arm ball joint. Tighten lower ball joint nut. (111) {21mm}

**Illustration 55****Illustration 56**

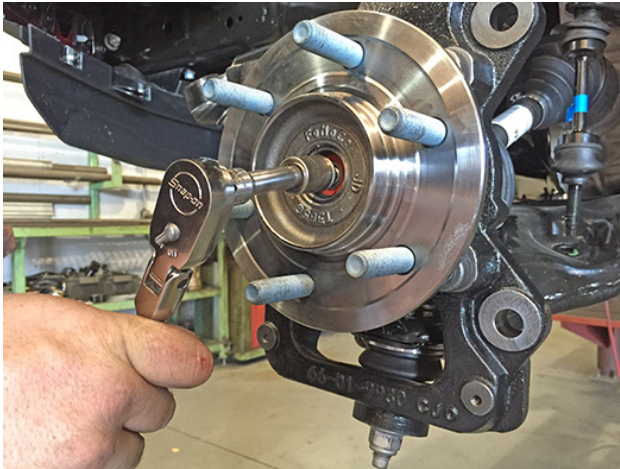
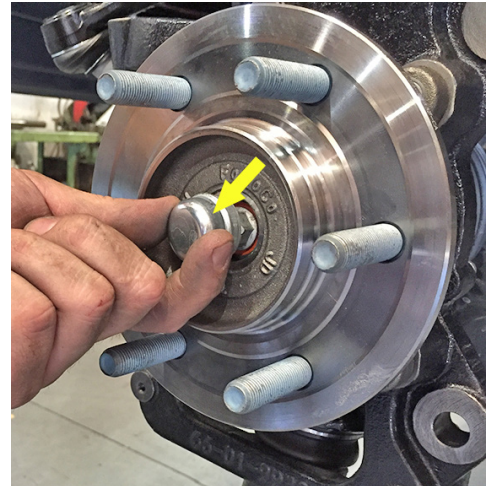
**35) VACUUM ASSEMBLY AND CV SHAFT...**

[Illustration 57] Attach the vacuum assembly to the new knuckle using the three factory bolts. (10) {8mm}

[Illustration 58 & 59] Pay close attention to the CV shaft engagement and make sure it is fully seated in the hub assembly, install the factory nut and tighten. (20) {15mm} Install dust cap.

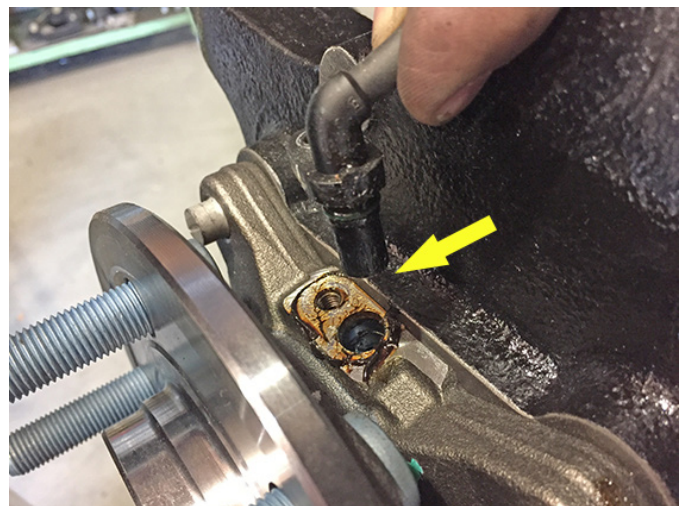
**36) UPPER BALL JOINT...**

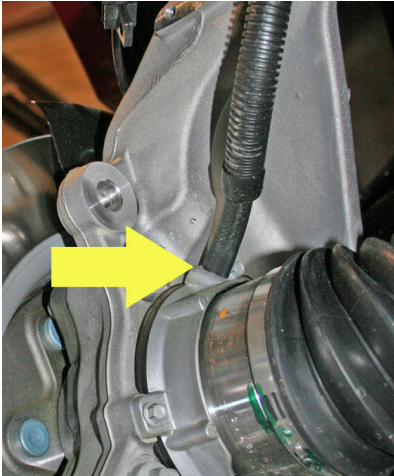
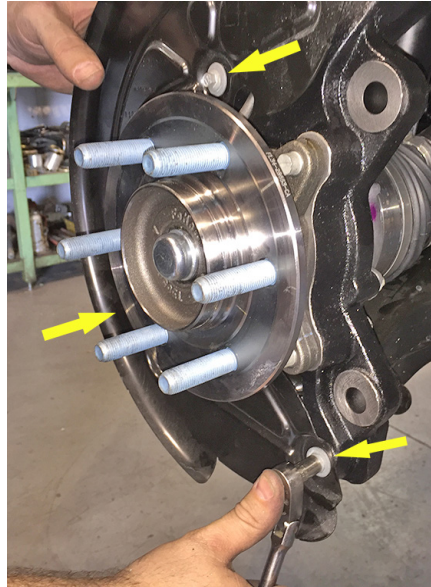
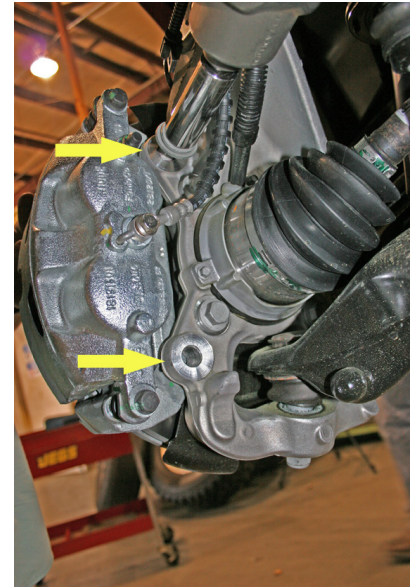
[Illustration 60] Attach the upper ball joint to the knuckle and tighten. (103) {18mm}

**Illustration 57****Illustration 58****Illustration 59****37) ABS SENSOR AND VACUUM LINES...**

[Illustration 61] Connect the ABS sensor to the hub assembly and tighten. (1) {5mm allen}

[Illustration 62] Connect the vacuum lines to the vacuum module.

**Illustration 60****Illustration 61**

**Illustration 62****Illustration 63****Illustration 64****38) DUST SHIELD, ...**

- [Illustration 63] Install the dust shield and secure using the factory hardware; tighten. (7.5) {8mm}

**39) BRAKE CALIPERS...**

- Install the rotor; installing a factory lug nut will help hold the rotor in position to install the caliper.
- [Illustration 64] Apply thread locker to the factory bolts then position the caliper over the rotor and install the factory hardware and tighten. (159) {21mm}

**40) STEERING TIE ROD END...**

- [Illustration 65] Attach the tie rod end to the knuckle; tighten. (136) {21mm}

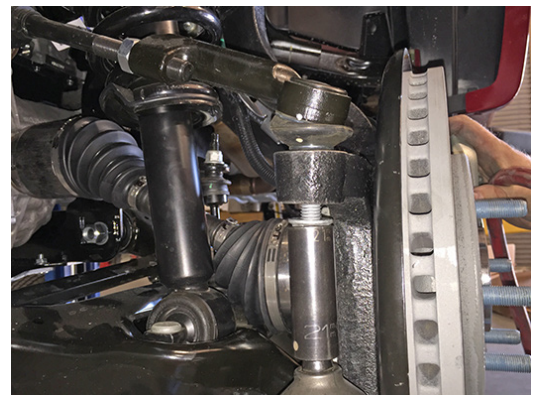
**41) BRAKE LINE BRACKETS...**

- [Illustration 66] Install the new brake line brackets (55-19-9910 driver's side and 55-18-9910 passenger's side) on the frame using the factory hardware. (18) {10mm}

- [Illustration 66 & 67] Use the bracket as a template to drill a 7/32" hole and install the 1/4" x 1/2" self-tapping bolt. (6.3) {3/8"}

- [Illustration 68] Carefully bend the brake lines to re-attach the factory brake line bracket to the new one using the supplied 5/16" x 3/4" bolt, washer, and nut. (13) {1/2"}

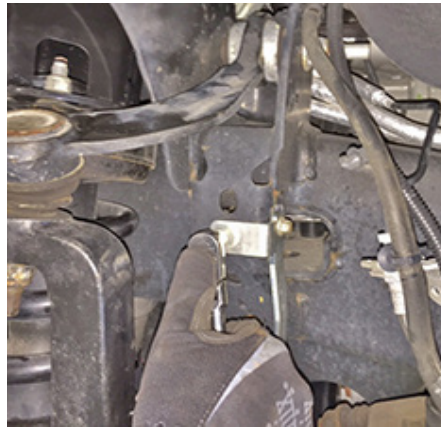
- [Illustration 68] Connect brake line bracket to the steering knuckle using the factory hardware. (18) {10mm}

**Illustration 65**

**Illustration 66**



**Illustration 67**



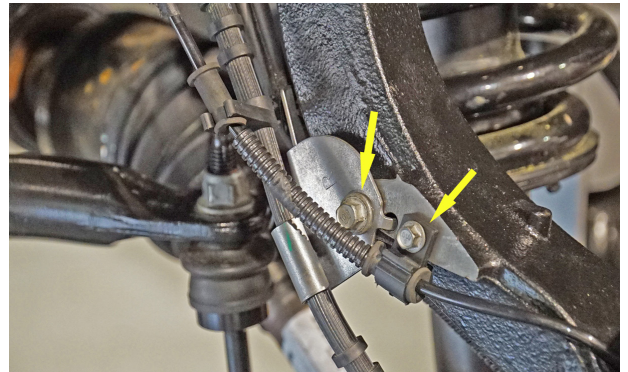
**Illustration 68**



**42) ABS SENSOR WIRE...**

□□ [Illustration 69] Connect the ABS sensor wire to the knuckle using the factory hardware. (9) {8mm} Make sure the wire is positioned below the bolt.

**Illustration 69**



Perform step 31 through 42 on the remaining side.

**43) SWAY BAR LINKS...**

□□ [Illustration 70] Connect the sway bar links to the lower control arm; tighten. (63) {15mm}

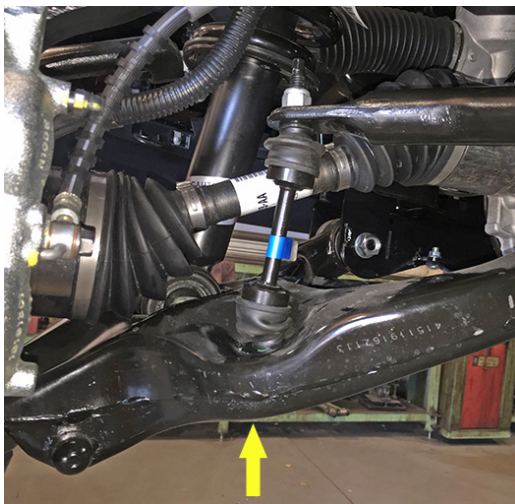
**44) TIRES / WHEELS...**

□□ [Illustration 71] Install tires and wheels. Tighten the lug nuts in the sequence shown. (151) {21mm}

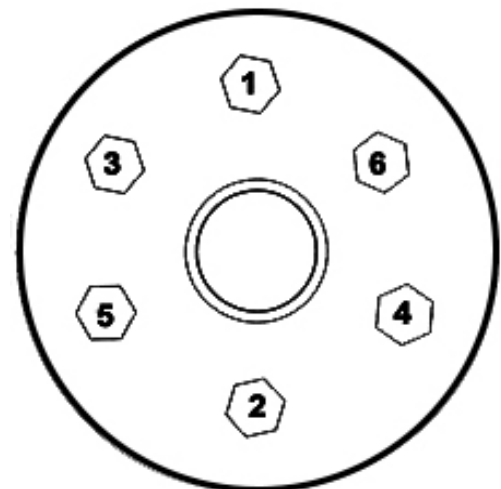
**WARNING:** When the tires / wheels are installed, always check for and remove any corrosion, dirt, or foreign material on the wheel-mounting surface, or anything that contacts the wheel-mounting surface (hub, rotor, etc.). Installing wheels without the proper metal-to-metal contact at the wheel mounting surfaces can cause the lug nuts to loosen and the wheel to come off while the vehicle is in motion.

**WARNING:** Retighten lug nuts at 500 miles after any wheel change, or anytime the lug nuts are loosened. Failure to do so could cause wheels to come off while vehicle is in motion.

**Illustration 70**



**Illustration 71**



Lower vehicle to the floor. The suspension is now supporting vehicle weight.

#### 45) LOWER CONTROL ARM...

[Illustration 72] Tighten the four lower control arm bolts (2 per side); keep the alignment cams in the up (neutral) position until the alignment is performed. (240) {27mm}

#### 46) UPPER CONTROL ARM...

[Illustration 73] Tighten the four upper control arm bolts (2 per side). (151) {bolt 18mm, nut 21mm}

#### 47) LOWER STRUT BOLT..

[Illustration 74] Tighten. (80) {bolt 27mm, nut 30mm}

#### 48) CLEARANCE CHECK...

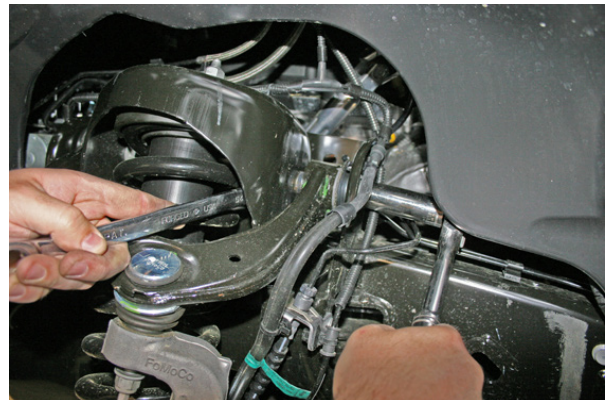
With the vehicle on the ground, cycle the steering lock-to-lock and check all components for proper operation and clearances. Pay special attention to the clearance between the tires / wheels and knuckles, brake hoses, wiring, etc.

Raise the vehicle back onto jack stands and secure as per step 1. With the suspension "hanging" at full extension travel, cycle the steering lock-to-lock and check all components for proper operation and clearances. Pay special attention to the clearance between the tires / wheels and knuckles, brake hoses, wiring, etc. Lower the vehicle to the floor.

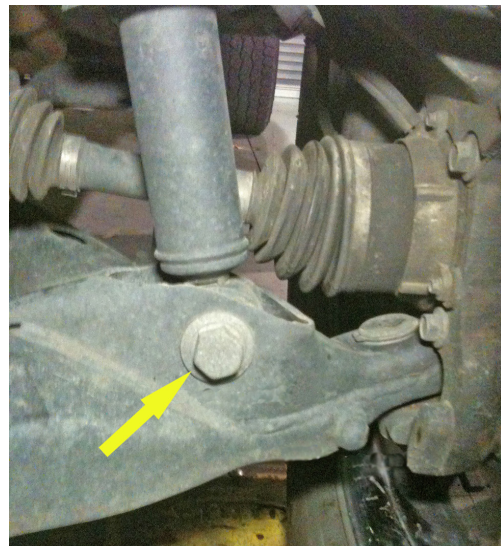
**Illustration 72**



**Illustration 73**



**Illustration 74**



## **REAR DISASSEMBLY**

### **49) RAISE REAR OF VEHICLE...**

☐☐ Chock the front tires. Position a jack beneath the center of the rear axle then raise rear of vehicle. Secure jack stands beneath the frame rails just forward of the rear springs. Remove rear tires.

### **50) EMERGENCY BRAKE...**

☐☐ [Illustrations 75] Unclip the top emergency brake cable from the tensioner bracket and the frame mount. If the lower cable is retained with a wire bracket and bolt; remove. If the lower cable is retained by a plastic clip pressed into the factory bracket; remove, careful not to damage plastic clip.

☐☐ [Illustration 76 & 77] If the lower cable was retained by the wire bracket; bolt the new brake bracket (55-12-9922) to the frame reusing the factory bolt. (9) {10mm} Position the supplied 1/2" hardware in the top hole and tighten. (75) {3/4"}

☐☐ If the lower cable was retained by the plastic clip; bolt the new bracket (55-12-9922) to the frame using the supplied 1/2" hardware in the top hole of the new bracket. Use the bracket as a template and drill a 11/32" hole. Install the supplied 5/16" x 1" bolt, washers, and nyloc nut through the drilled hole and tighten. (18) {1/2"}

☐☐ [Illustration 78] Once the new bracket is in place, if equipped with the wire bracket, bolt it to the new bracket with the supplied 5/16" x 1" bolt, washers, and nyloc nut. If equipped with the plastic clip, snap clip into the new bracket.

☐☐ [Illustration 79 & 80] Install the top cable into the new bracket and reconnect the cable to the tensioner bracket.

**Illustration 75**



**Illustration 77**

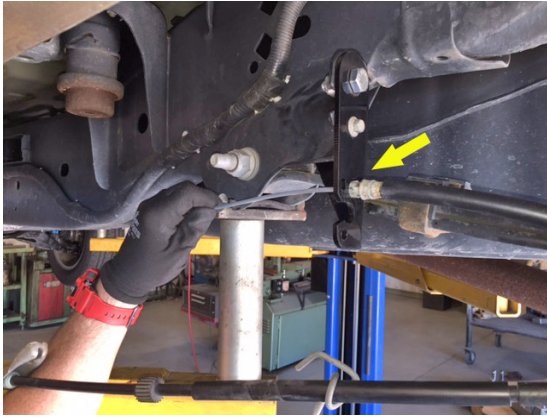
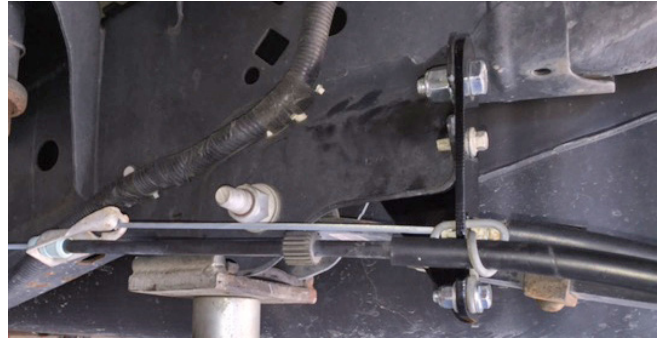
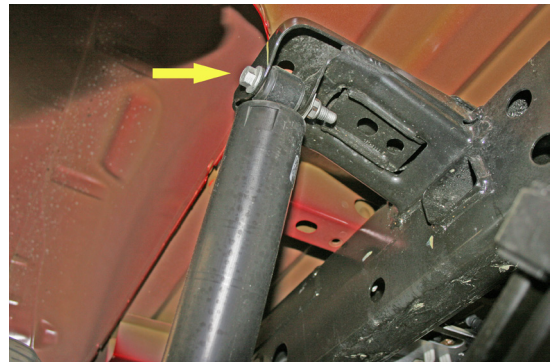


**Illustration 76**



**Illustration 78**



**Illustration 79****Illustration 80****Illustration 81****Illustration 82****51) SHOCK ABSORBERS...**

- [Illustration 81 & 82] Remove shock absorbers. {bolt 15mm, nut 18mm}

**52) BRAKE LINE BRACKET...**

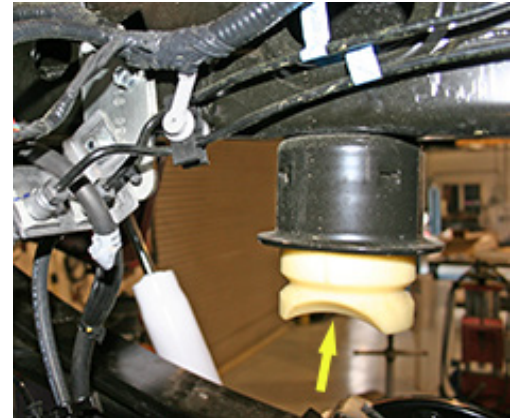
- Unbolt the factory brake line bracket from the frame. {10mm}

**53) AXLE VENT HOSE...**

- Un-clip the axle vent hose from the bottom of the truck bed.

**54) BUMP STOP...**

- [Illustration 83] Remove the rear bump stops from the frame. {13mm}

**Illustration 83****55) UBOLTS AND BLOCKS...**

- [Illustration 84] Using a floor jack support the rear axle and remove the u-bolts and discard. {21mm}

**Illustration 84**

- Lower the axle and if installing the 4.5" lift remove the factory block; leave the factory block in place if installing the 6" lift.

## **REAR ASSEMBLY**

### **56) LIFT BLOCKS AND UBOLTS...**

□□ [Illustration 85] Install the new lift blocks (55-30-9930). The pins should be offset to the front of the vehicle; there is an indicator notch in the block that should face the front of the vehicle. Make sure the locating pins are seated correctly. Jack the axle back into position while making sure that the axle pins are seated correctly into the block.

□□ [Illustration 85] Install the new ubolts (4.5" lift = 10342 or 6" lift = 10352) using the supplied 9/16" washers and nuts; tighten using the "X" pattern. (91) {7/8"}

**Illustration 85**



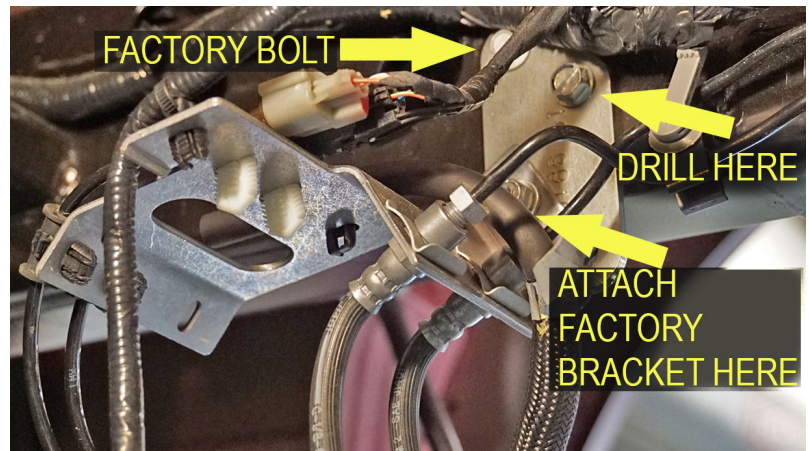
### **57) BRAKE LINE BRACKET...**

□□ [Illustration 86] Install the new brake line extension bracket (55-16-9910) to the frame using the factory hardware. (26) {10mm}

□□ [Illustration 86] Use the bracket as a template to drill a 9/32" hole and install the 5/16" x 1" self-tapping bolt. (13) {1/2"} Make sure the new hole is below and forward of the factory hole in the frame.

□ [Illustration 86] Carefully bend brake lines to attach the factory brake line bracket to the new bracket using the supplied 5/16" x 1" bolt, washer, and nut. (13) {1/2"} Do not kink the lines.

**Illustration 86**



### **58) AXLE VENT HOSE...**

□ Attach the vent hose to the top of the factory brake line bracket.

### **59) SHOCK ABSORBERS...**

□□ Install the supplied bushings then the sleeves into the shocks.

□□ [Illustration 87] Attach shocks (01-85150 Superide or BE5-6249-H5 Bilstein) to vehicle with the body of the shock positioned on the axle end, using the factory hardware. (55) {bolt 15mm, nut 18mm}

**Illustration 87**





**60) BUMP STOPS...**

[Illustration 88] Position the new bump stop spacers (55-12-9930) on top of the factory bump stop and attach the frame using the supplied 10mm x 150mm bolt and washer. (40) {8mm allen}

**61) TIRES / WHEELS...**

Reinstall tires and wheels. Tighten the lug nuts in the sequence shown. (151) {21mm}

**WARNING:** When the tires / wheels are installed, always check for and remove any corrosion, dirt, or foreign material on the wheel mounting surface, or anything that contacts the wheel mounting surface (hub, rotor, etc.). Installing wheels without the proper metal-to-metal contact at the wheel mounting surfaces can cause the lug nuts to loosen and the wheel to come off while the vehicle is in motion.

**WARNING:** Retighten lug nuts at 500 miles after any wheel change, or anytime the lug nuts are loosened. Failure to do so could cause wheels to come off while vehicle is in motion.

Lower vehicle to the floor.

**62) CLEARANCE CHECK...**

With the vehicle on the ground, check all components for proper operation and clearances. Pay special attention to the clearance between the tires / wheels, brake hoses, wiring, etc.

**63) FOUR WHEEL DRIVE...**

Activate four wheel drive system and check for proper engagement.

**64) HEADLIGHTS...**

Re-adjust headlights to proper setting.

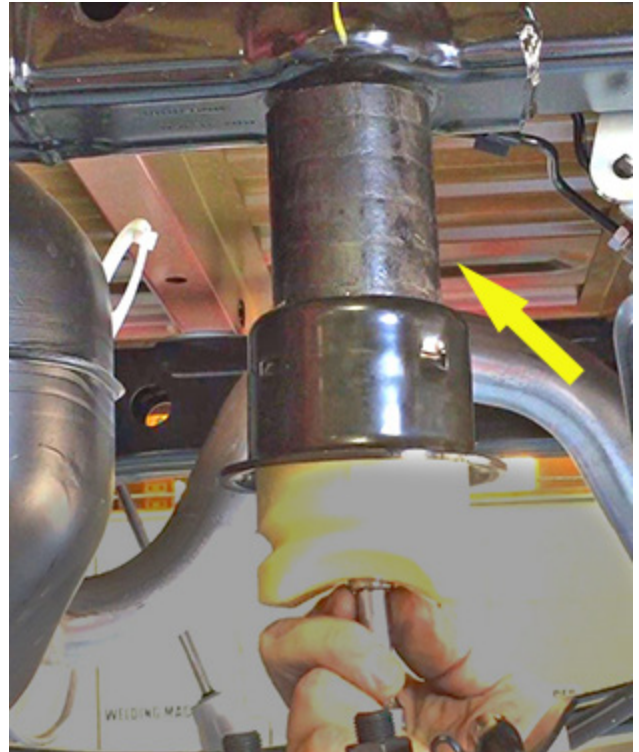
**65) SUPERLIFT WARNING DECAL...**

Install the WARNING TO DRIVER decal on the inside of the windshield, or on the dash, within driver's view. Refer to the "NOTICE TO DEALER AND VEHICLE OWNER" section below.

**66) SUPERLIFT BADGES...**

This kit is packaged with a Superlift badge. Prior to installation, use the supplied alcohol pad to eliminate all soap and or other non-adhering residues that may impair adhesion, thoroughly clean the entire area of placement.

The adhesive on our badges is pressure sensitive and must be applied using pressure on all areas of the graphic. Like any PSA (pressure sensitive adhesive), it can take up to 72 hours for the adhesive to fully cure. Once the badge is in place do not peel it up, this will diminish the adhesive properties and could result in damaging the badge itself.

**Illustration 88**

□ To keep your Superlift badge in “like new” appearance keep the badge free/clear of solvents and chemicals that could cause the adhesive to dry or dissolve. This includes gasoline, diesel fuel, paint thinner, and alcohol. Soap and water is all that is needed for cleaning. Degreasers can be used sparingly and hand whipped/applied if needed, although not suggested.

### **Important Maintenance Information**

It is the ultimate buyer’s responsibility to have all bolts / nuts checked for tightness after the first 100 miles and then every 1000 miles. The steering, suspension and driveline systems, plus wheel alignment should be inspected by a qualified professional mechanic at least every 3000 miles.

### **Limited Lifetime Warranty / Warnings**

Your Superlift® product is covered by the Limited Warranty explained below that gives you specific legal rights. This limited warranty is the only warranty Superlift® makes in connection with your product purchase. Superlift® neither assumes nor authorizes any retailer or other person or entity to assume for it any other obligation or liability in connection with this product or limited warranty.

### **Superlift, LLC, Limited Lifetime Warranty**

What is covered? Subject to the terms below, Superlift® will repair or replace its products found defective in materials or workmanship for so long as the original purchaser owns the vehicle on which the product was originally installed. Your warrantor is Superlift, LLC, doing business as Superlift® Suspension Systems (“Superlift®”).

What is not covered? Your Superlift® Limited Warranty does not cover products Superlift® determines to have been damaged by or subjected to:

- Alteration, modification or failure to maintain.
- Normal wear and tear (bushings, rod ends, etc.). Scratches or defects in product finishes (powder coating, plating, etc.).
- Damage to, or resulting from, the vehicle’s electronic stability system, related components or other vehicle systems.
- Racing or other vehicle competitions or contests. Accidents, impact by rocks, trees, obstacles or other aspects of the environment.
- Theft, vandalism or other intentional damage.

If a replacement part is needed before the Superlift® part in question can be returned, you must first purchase the replacement part. Then, if the part in question is deemed warrantable, you will be credited / refunded.

## **Other Limitations - Exclusion of Damages - Your Rights Under State Law**

- Neither Superlift® nor your independent Superlift® dealer are responsible for any time loss, rental costs, or for any incidental, consequential or other damages you may have.
- This Limited Warranty gives you specific rights, and this is the only warranty Superlift® makes in connection with your product purchase. You may also have other rights that vary from state to state. For example, while all implied warranties are disclaimed herein, any implied warranty required by law is limited to the terms of our Limited Lifetime Warranty as described above. Some states do not allow limitations of how long an implied warranty lasts and / or do not allow the exclusion or limitation of incidental or consequential damages, so the limitations and exclusions herein may not apply to you. Superlift® neither assumes nor authorizes any retailer or other person or entity to assume for it any other obligation or liability in connection with this product or Limited Warranty.

## **Superlift, LLC, Satisfaction Guarantee**

We want you to purchase our product with confidence and be 100% satisfied with the end result. If you have any legitimate issue, and Superlift® cannot rectify it to your satisfaction, Superlift® will take back the Superlift® brand product and refund the customer 100% of the product purchase price.

The details:

- Offer valid to the original retail consumer for six months after product purchase.
- May require a Superlift® dealer's participation in order to assist in "troubleshooting" the issue.
- Any costs related to labor, freight, incidental or consequential are not refunded.
- Refund will not exceed Superlift's® published retail price.

## **Important Product Use and Safety Information / Warnings**

As a general rule, the taller a vehicle is, the easier it will roll over. Offset, as much as possible, what is lost in rollover resistance by increasing tire track width. In other words, go "wide" as you go "tall"; always use as wide a tire and wheel combination as feasible to enhance vehicle stability. We strongly recommend, because of rollover possibility, that the vehicle be equipped with a functional roll bar and cage system. Seat belts and shoulder harnesses should be worn at all times. Avoid situations where a side rollover may occur.

Generally, braking performance and capabilities are decreased when significantly larger / heavier tires and wheels are used. Take this into consideration while driving. Also, changing axle gear ratios or using tires that are taller or shorter than factory height will cause an erroneous speedometer reading. On vehicles equipped with an electronic speedometer, the speed signal impacts other important functions as well. Speedometer recalibration for both mechanical and electronic types is highly recommended.

Do not add, alter, or fabricate any factory or aftermarket parts to increase vehicle height over the intended height of the Superlift® product purchased. Mixing component brands is not recommended.